

For complete installation instructions and videos, visit www.AFLglobal.com/APEX or use the QR code.



APEX VAULT MOUNTING SYSTEM (FIBERGLASS POLE MOUNTING)

The Apex Vault Mounting System is designed to attach an Apex Splice Closure at a fixed height at the top of an AFL Switchblade® Vault or other compliant fiber storage vaults. These are designed to support an Apex or other splice closure. The supplied support rod or hanger brackets may also be utilized in Unistrut applications.

Ordering Information

AFL NO.	DESCRIPTION
AX-KIT-HRZ-1	Horizontal mount hanger kit, with 31.75" Rod
AX-KIT-HRZ-2	Horizontal mount hanger kit, with 35.75" Rod

Standard Mounting Hardware included — Brackets, Strap Ties, Grip Tape, Bolts, Flat Fender Washers, Lock washers, Nylock Nuts, and Fiberglass Suspension Rod (Figure 1)

INSTALLING APEX VAULT MOUNTING BRACKETS TO APEX TABS

1. Align Tab Bracket to attach to Apex dome. Both brackets should face the same direction for consistency.
 - It is "standard" to mount the bracket with the strand mount over the tab to help the closure balance on the strand but it may be installed the opposite way if an application calls for it. (Figure 2)
2. Insert the supplied carriage bolt through bracket and then through the tab on the dome.
3. Install oversized flat fender washer, lock washer and Nylock nut. (Figure 3)
4. Make sure Carriage bolt is fully seated in bracket BEFORE tightening.
5. Tighten with Can Wrench or 7/16" socket (30-50 in/lbs). (Figure 4)

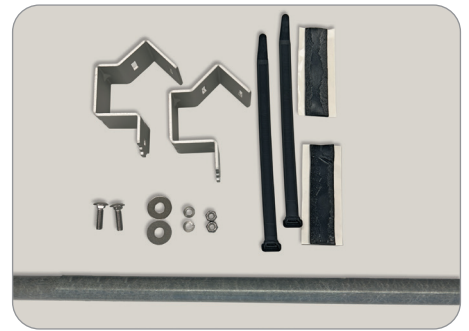


Figure 1



Figure 2

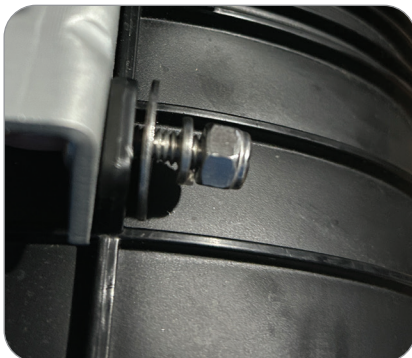


Figure 3

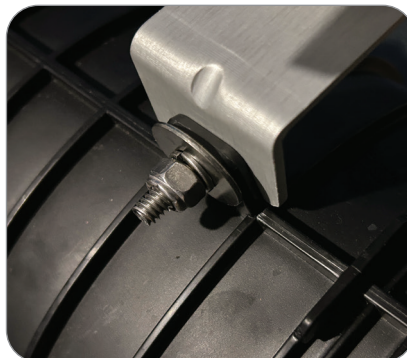


Figure 4

INSTALLING APEX CLOSURE ONTO VAULT SUSPENSION ROD

1. Mark where the Apex Closure will be secured and apply supplied grip tape to each location fully surrounding the hardware. **(Figure 5)**
 - Be mindful of bend radius concerns when choosing a mounting location.
3. Hang the Apex Closure over the grip tape locations and feed large black strap tie through each bracket. **(Figure 5)**
4. Once Apex Closure is in the proper location, cinch and secure the two strap ties. Cut excess tail from strap tie. Slide latch toward base of bracket to protect the latch longterm. **(Figures 6 and 7)**
5. Install Suspension Rod with Apex Closure into slots at top of vault or applicable location on Unistrut. **(Figure 8)**

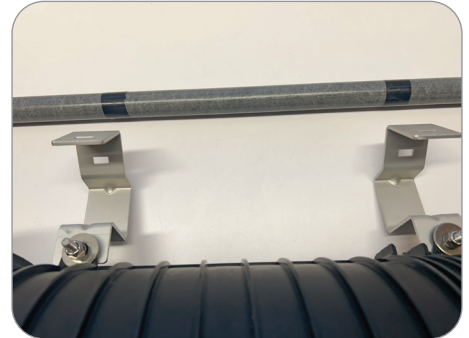


Figure 5



Figure 6

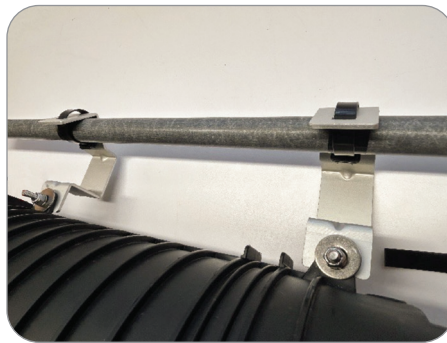


Figure 7

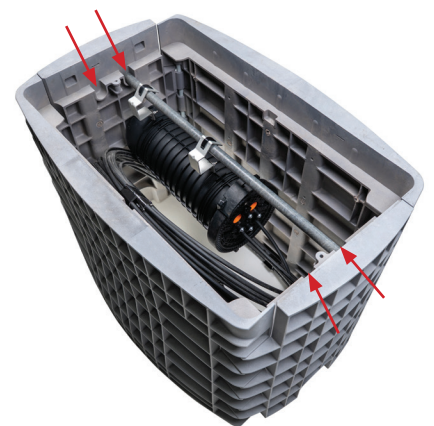


Figure 8