

Apex® X-2S Sealed Splice Closure

The Apex X-2S is a sealed splice closure designed for protecting optical fiber splices in both above- or below-grade applications in a butt configuration. The Apex X-2S is capable of up to 216 single fusion, 432 mass fusion with standard ribbon, or 1728 mass fusion with “rollable ribbon” fiber types such as AFL’s SpiderWeb Ribbon® (SWR®). Cables are sealed by a unique wedge system spaced evenly around the circumference of the closure’s base. Each cable seal is opened by a press-to-release lever and sealing is completed by actuating a single screw for each cable. Each cable is sealed individually, ensuring original craftsmanship when cables may be added at a later date. Up to 6 splice trays are attached and hinge off a central organizer. A plastic slack storage basket resides underneath the trays with ample tie down points for managing tube and fiber slack.

Features

- Individual cable sealing ports with tool-less release mechanism and gel sealing
- Hinging, lockable splice trays
- Plastic slack storage basket with optional segmented basket to separate ribbon and loose tube slack storage
- Six cable ports with up to six ground lugs
- Capable of up to 16 drop cables with an expressed distribution cable using multi-drop entry kits
- Splice trays with universal splice modules capable of holding single fusion, mass fusion and mechanical splices as well as other devices such as passive optical splitters
- Dome-to-base O-ring seal retained into dome to prevent loss or damage, but is still replaceable if necessary



Specifications

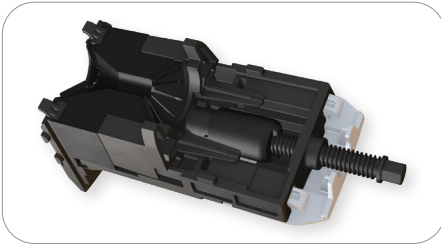
Parameter	Value
Dimensions – L x D, in (cm)	20.0 x 12.0 (51 x 30)
Weight, No Trays – lb (kg)	22 (10)
Splice Capacity – Single, Mass (SWR), Mass (Standard)	288, 1728, 864
Splice Tray Capacity	6
Cable Diameter, Single Port, in (mm)	0.40" – 1.10" (10.0 - 28.0)
Cable Diameter, Multi-Drop Kit, in (mm)	0.20" – 0.39" (5.0 - 9.9) or flat drop
Application	Direct Bury, Handhole, Aerial, Pole/Wall
Operating Temperature	-40°F to 149°F (-40°C to 65°C)
Testing	Test to and Passed GR-771-CORE 20 ft. Waterhead test
Shipping Standards	16 per pallet (40x48)



BABA/ BEAD compliant configurations and part numbers indicated where applicable. Non-compliant items may be eligible for BEAD De Minimis waiver. For complete list of compliant part numbers, see AFL BEAD Program Compliant Equipment List: [AFLglobal.com/BEAD](https://aflglobal.com/BEAD)

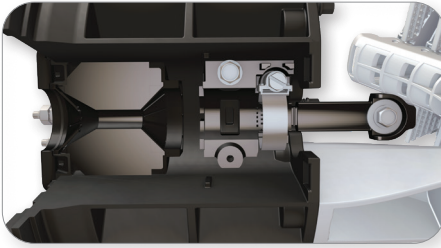
Telcordia is a registered trademark of Telcordia Technologies, Inc.

Apex® X-2S Sealed Splice Closure



Gel Sealing

Individual wedges located evenly around the circumference of the base are removed with the press of a button. When cables are in place and ready to be sealed, the gel is compressed by a single screw, decreasing installation time. Individual port seals ensure cables never become unsealed when adding new cables at a later date.



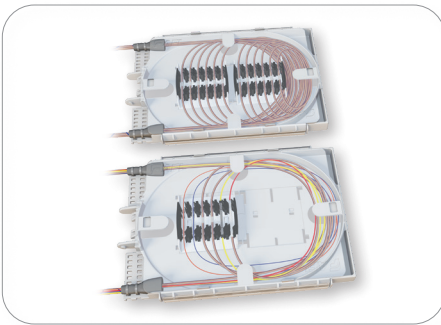
Cable Entry Ports and Strain Relief

The cable entry ports surrounding the circumference of the base accept single cables from 0.4" to 1.10" in diameter. These ports can be expanded through the use of optional drop cable entry kits, allowing up to 4 flat drops or cables from 0.2" to 0.39" to use a single port. Additionally, each port has the capability to be paired with its own grounding lug if necessary. Closures can be configured with enough strain relief kits for 2 to 6 cables from the factory. For closures with less than 6, additional cables can be added through the use of additional cable strain relief kits sold separately.



Slack Storage

A molded slack storage basket allows for use of the entire cross section of the closure to maximize storage.



Splice Trays with Modular Splice Holders

Splice trays are organized in a hinging array that automatically lock when tilted to the upward position for easy access to the splice trays and slack storage below. The universal splice module holds up to 18 single fusion, 6 mass fusion or 12 mass fusion double-stacked when using SWR, or 6 mechanical splices as well as devices such as PLC splitters. This eliminates the need for specifying and stocking multiple splice trays for multiple applications.

Ordering Information

AX	2S	B	L	0	2	6	X
Apex Closures	Closure Size	Basket Type	Tray Type	Number of Trays	Cable Strain Relief Hardware Kits	Number of Ground Lugs	Inner Basket
AX = Standard BX = BEAD Compliant	2S = X-2S Size	B = X-2S Sized Basket	X = No preinstalled tray L = X-2S Tray Loaded with splice modules	0 1 2 3 4 5 6	0 1 2 3 4 5 6	0 1 2 3 4 5 6	X = No Inner Basket



Apex® X-2S Sealed Splice Closure

Splice Trays and Splice Modules

Apex X-2S closures utilize X-2S size splice trays. Trays can be ordered fully loaded or half loaded with splice modules. For “rollable” type ribbon such as AFL’s SpiderWeb Ribbon, trays can be fully loaded for 24 mass splices, or 288 fibers per tray. For standard ribbon, AFL recommends half loaded for 6 mass splices single-stacked, or 72 fibers.

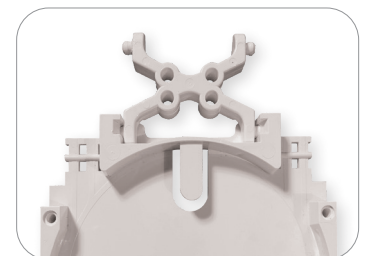
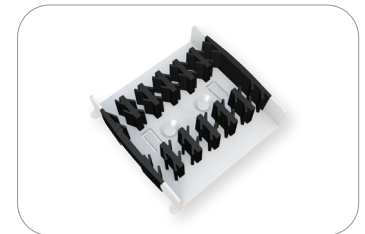
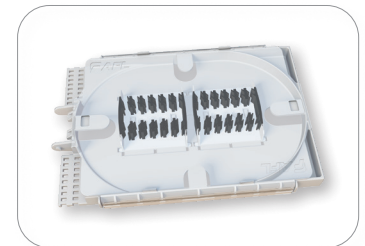
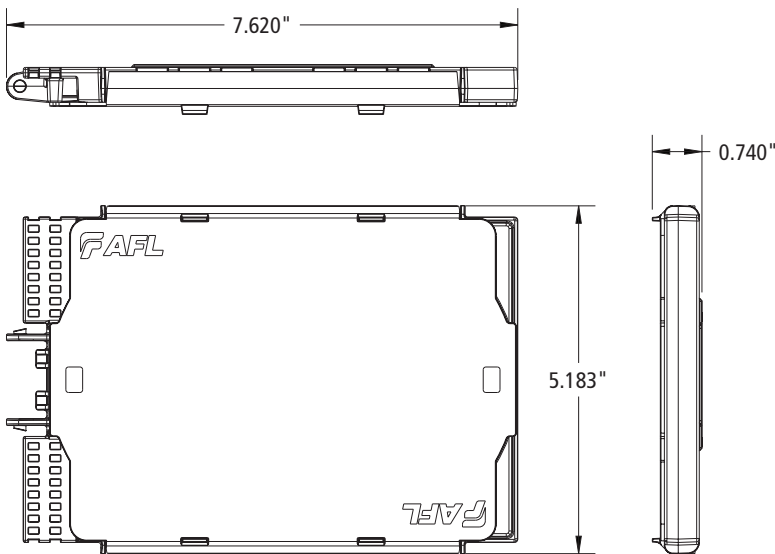
Ordering Information

Description	Tray Capacity		AFL No.	AFL BABA Compliant No.
	Single	Mass		
X-2S Tray Fully Loaded with Two Splice Modules (288 fibers per tray only recommended for rollable ribbon, e.g. AFL SWR)	48**	288	AX-TRAY-2S-2	BX-TRAY-2S-2
Additional splice module (18 single fusion triple stacked, 12 mass fusion double stacked, 6 mechanical) – Pack of 20	-	-	AX-TRAY-MOD-20	BX-TRAY-MOD-20
X-2S Tray Empty	-	-	AX-TRAY-2S-E	BX-TRAY-2S-E
FP-40 40 mm Single Fiber Slim Protection Sleeve	-	-	S018262	NA - May be Eligible for BEAD De Minimis Waiver
FP-60 60 mm Single Fiber Slim Protection Sleeve	-	-	018263	

* 288 fibers per tray with mass fusion double-stacking 1728 total closure capacity).

** When using AFL’s Slim Protection Sleeves.

Dimensions



Apex® X-2S Sealed Splice Closure

Installation Kits

The AFL Apex closure line has a variety of installation accessories kits to fit many applications. Additional accessories may be available. Contact AFL.



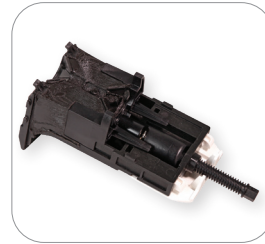
CAU Kit



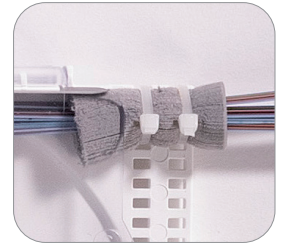
Ring Clamp Replacement Kit



O-Ring Grease Kit



Wedge Replacement Kit



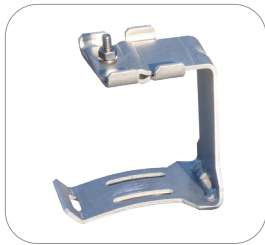
Foam Retention

Ordering Information

Description	AFL No.	AFL No.
Replacement Kits		
X-2 and X-2S Single Cable Strain Relief/Cable Attachment Unit (CAU) Kit	AX-KIT-CBLSTRN	NA - May be Eligible for BEAD De Minimis Waiver
X-2 and X-2S Dome to Base O-Ring Replacement Kit	AX-KIT-ORING-2	
Apex O-Ring Grease, Pack of 10	AX-KIT-GREASE-10	
X-2 and X-2S Dome to Base Locking Ring Clamp Replacement Kit	AX-KIT-CLAMP-2	
X-2 and X-2S Wedge Replacement Kit	AX-KIT-WEDGE-2	
X-2 and X-2S Inner Base Gel Replacement Kit	AX-KIT-GEL-2	
X-2S Basket and Yoke Assembly Kit. Can be used in combination with the basket cover.	AX-KIT-BASKET-2S	
X-2S Dome Replacement Kit	AX-KIT-DOME-2S	
WTC-SWR Bundle Splice Tray Retention Kit - Includes 25 foam grommets for retaining SWR bundles to splice trays	HW000406	
Velcro, 75 Foot Length Roll – For securing SWR bundles in the slack basket	FC001759	

Apex® X-2S Sealed Splice Closure

Installation Accessories



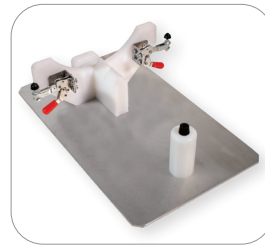
Apex Aerial Hanger Bracket



Apex Pole/Wall Mount



Adjustable Aerial Hanger Bracket



X-2 and X-2S Installation Stand



Universal Installation Stand



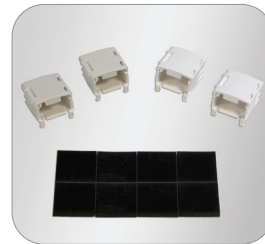
Mesh Transition Tubing



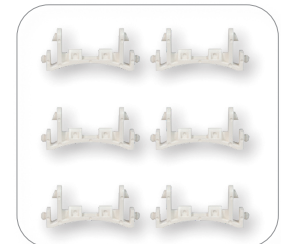
Silicone Spiral Wrap



AFRS Kit 1



AFRS Kit 2



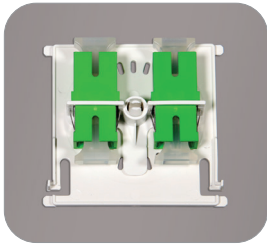
A-B Tray Adapter Kit

Ordering Information — Accessories

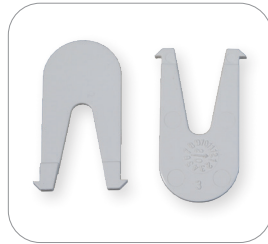
Description	AFL No.	AFL BEAD Compliant No.
Accessories		
Aerial strand mount hanger kit	AX-KIT-AERIAL-1	BX-KIT-AERIAL-1
Pole/wall mount kit	AX-BR30	BX-BR30
Adjustable Aerial Strand Mount Hanger kit	AX-KIT-AERIAL-ADJ	BX-KIT-AERIAL-ADJ
ADSS Aerial hanger brackets	AX-KIT-AERIAL-ADSS	BX-KIT-AERIAL-ADSS
Multi-Drop Cable Entry Kit (fits up to 4 cables 0.20" to 0.39" in diameter or flat drop cable)	AX-KIT-DROP-4	
X-2 and X-2S Installation Stand	FC104649	
Apex Universal Installation Stand	AX-KIT-U-STAND	
1/4" Colored Mesh Transition Tubing, 250' Spool (*Replace "XX" with color per TIA-598 color code - BL, OR, GN, BR, GY, WH, RD, BK, YL, VI, NP or PP)	AX-KIT-TUBE-014-XX*	
Silicone Spiral Wrap, 5.5 Foot Length	FC001657	
Apex Cable Bonding Kit (Bonds armored cable sheath to ground) – Pack of 10	AX-KIT-GROUND-10	
Apex Internal Multiple Ground Bonding Kit	AX-KIT-GNDLD-5	
Apex Advanced Fiber Retention System (AFRS) Kit 1 – Used for Ribbon Cable (Flat Matrix, SWR, Tubed, Central Core). Kit includes: Mesh Basket Adapter (2 ea.), Mesh Housing (2 ea.), Mesh Insert (24 ea.), V-Clips (12 ea.), and Clean Cut Gray Mesh (13 ft.).	AX-KIT-AFRSRBN	
Apex AFRS Kit 2 – Used for Loose Tube Cable. Kit includes: V-Clip (24 ea.) and Retention Pads (6 sheets of 8 pads)	AX-KIT-AFRSLT	NA - May be Eligible for BEAD De Minimis Waiver
Apex AFRS Kit 3 – V-Clip bulk kit. Includes: V-Clips (120 ea.) and Mesh Inserts (120 ea.)	AX-KIT-AFRSVC-120	
Apex AFRS Kit 4 – Mesh bulk kit. Includes: Clean Cut Gray Mesh (100 ft.)	AX-KIT-AFRSMESH-100FT	
Apex AFRS Kit 5 – Mesh Housing bulk kit. Includes: Mesh Basket Adapter (10 ea.) and Mesh Housing (10 ea.)	AX-KIT-AFRSAH-10	
Apex AFRS Kit 6 – Mesh Basket Adapter bulk kit. Includes: Mesh Basket Adapter (10 ea.)	AX-KIT-AFRSA-10	
Apex Restoration Kit, 1000' of 144F Non-Armored Wrapping Tube Cable (Apex X-2S is in Restoration Kit)	AX-2S-B-L-4-4-4-X-1R1000F	
Apex A-B Tray Adapter Kit, 1 Kit of 6 pieces	AX-ADPTR-ABTRAY-6	
Apex A-B Tray Adapter Kit, 10 Kits of 6 pieces	AX-ADPTR-ABTRAY-60	

Apex® X-2S Sealed Splice Closure

Installation Accessories (cont.)



SC Bulkhead Adapter Kit



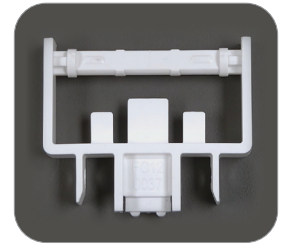
Replacement Slack Storage Basket Tabs



Horizontal Mount Hanger Kit



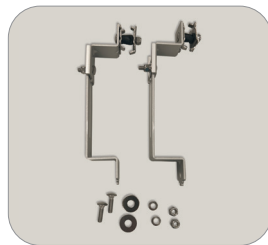
Tray Adapter to FOSC B Kit



Tray Adapter to FOSC C/D Kit



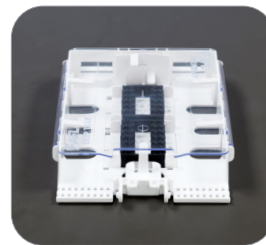
Aerial Strand Tab Mount Hanger Kit



Adjustable Aerial Strand Tab Mount Hanger Kit



ADSS Tab Mount Hanger Kit



X-2S Deep Splice Tray

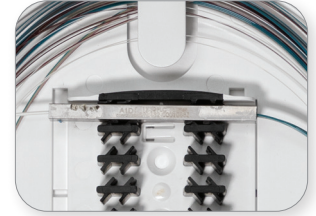
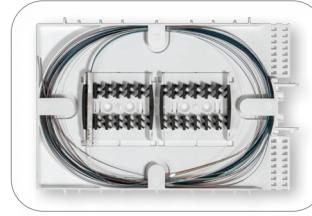
Ordering Information — Accessories (cont.)

Description	AFL No.	AFL BEAD Compliant No.
Accessories		
Apex Bulkhead Kit with Plate SC/APC Adapters, 1 kit	AX-TRAY-ASC	NA - May be Eligible for BEAD De Minimis Waiver
Apex Bulkhead Kit with Plate with SC/UPC Adapters, 1 kit	AX-TRAY-USC	
Apex Bulkhead Kit with Plate SC/APC Adapters, 6 pc kit	AX-TRAY-ASC-6	
Apex Bulkhead Kit with Plate SC/UPC Adapters, 6 pc kit	AX-TRAY-USC-6	
Apex Replacement Slack Storage Basket Tabs – Pack of 25	AX-KIT-BTAB-25	
Horizontal mount hanger kit, with 31.75" Rod	AX-KIT-HRZ-1	
Horizontal mount hanger kit, with 35.75" Rod	AX-KIT-HRZ-2	
Kit, Apex X-2/X-2S Tray Adapter to FOSC B, 1 Kit of 6 Pieces Apex X-2/X-2S to FOSC B	AX-KIT-ADPTR-X2BTRAY-6	
Kit, Apex X-2/X-2S Tray Adapter to FOSC B, 1 Kit of 60 Pieces Apex X-2/X-2S to FOSC B	AX-KIT-ADPTR-X2BTRAY-60	
Kit, Apex X-2/X-2S Tray Adapter to FOSC C/D, 1 Kit of 6 Pieces Apex X-2/X-2S to FOSC C/D	AX-KIT-ADPTR-X2CDTRAY-6	
Kit, Apex X-2/X-2S Tray Adapter to FOSC C/D, 1 Kit of 60 Pieces Apex X-2/X-2S to FOSC C/D	AX-KIT-ADPTR-X2CDTRAY-60	
Aerial Strand Tab Mount Hanger Kit	AX-KIT-AERIAL-TAB	
Adjustable Aerial Strand Tab Mount Hanger Kit	AX-KIT-ADJAERIAL-TAB	
ADSS Tab Mount Hanger Kit	AX-KIT-ADSS-TAB	
Apex X-2S Deep Splice Tray, with 2 Splice Modules, No Adapters	AX-TRAY-2S-D-2-E	
Apex X-2S Deep Splice Tray, No Splice Modules, with ASC Adapters	AX-TRAY-2S-D-E-ASC	
Apex X-2S Deep Splice Tray, No Splice Modules, No Adapters	AX-TRAY-2S-D-E-E	

Apex® X-2S Sealed Splice Closure

Splitter Splice Trays

Passive optical splitters, or PLCs (Planar Lightwave Circuits), can be provided preinstalled into the Apex X-2S splice tray. PLCs can either be installed and spliced within the same tray, or provided with a separate dedicated tray for splicing, with fibers routed between trays using protective tubing. A third option provides one additional tray to separate input and output fiber splicing.



Ordering Information

Description	Split Ratio	AFL No.	AFL BEAD Compliant No.
Accessories			
X-2S Tray with Four Splice Modules, (1) 1x2 PLC Splitter	1x2	AX-TRAY-2S-12-1	AX-TRAY-2S-12-1
X-2S Tray with Two Splice Modules, (1) 1x4 PLC Splitter	1x4	AX-TRAY-2S-14-1	AX-TRAY-2S-14-1
X-2S Tray with Two Splice Modules, (1) 1x8 PLC Splitter	1x8	AX-TRAY-2S-18-1	AX-TRAY-2S-18-1
X-2S Tray with Two Splice Modules, (1) 1x16 PLC Splitter	1x16	AX-TRAY-2S-116-1	AX-TRAY-2S-116-1
X-2S Tray with Two Splice Modules, (1) 1x32 PLC Splitter	1x32	AX-TRAY-2S-132-1	AX-TRAY-2S-132-1
X-2S Tray with (1) 1x2 PLC Splitter and Separate Splicing Tray with Four Splice Modules	1x2	AX-TRAY-2S-12-2	AX-TRAY-2S-12-2
X-2S Tray with (1) 1x4 PLC Splitter and Separate Splicing Tray with Two Splice Modules	1x4	AX-TRAY-2S-14-2	AX-TRAY-2S-14-2
X-2S Tray with (1) 1x8 PLC Splitter and Separate Splicing Tray with Two Splice Modules	1x8	AX-TRAY-2S-18-2	AX-TRAY-2S-18-2
X-2S Tray with (1) 1x16 PLC Splitter and Separate Splicing Tray with Two Splice Modules	1x16	AX-TRAY-2S-116-2	AX-TRAY-2S-116-2
X-2S Tray with (1) 1x32 PLC Splitter and Separate Splicing Tray with Two Splice Modules	1x32	AX-TRAY-2S-132-2	AX-TRAY-2S-132-2
X-2S Tray with (1) 1x2 PLC Splitter and 2 Separate Splicing Trays with Four Splice Modules each	1x2	AX-TRAY-2S-12-3	AX-TRAY-2S-12-3
X-2S Tray with (1) 1x4 PLC Splitter and 2 Separate Splicing Trays with Two Splice Modules each	1x4	AX-TRAY-2S-14-3	AX-TRAY-2S-14-3
X-2S Tray with (1) 1x8 PLC Splitter and 2 Separate Splicing Trays with Two Splice Modules each	1x8	AX-TRAY-2S-18-3	AX-TRAY-2S-18-3
X-2S Tray with (1) 1x16 PLC Splitter and 2 Separate Splicing Trays with Two Splice Modules each	1x16	AX-TRAY-2S-116-3	AX-TRAY-2S-116-3
X-2S Tray with (1) 1x32 PLC Splitter and 2 Separate Splicing Trays with Two Splice Modules each	1x32	AX-TRAY-2S-132-3	AX-TRAY-2S-132-3