

Application Note

DENALI™ OCM Bracket

This Application Note will discuss the DENALI™ OCM bracket and the recommended rack placement, relative to the DENALI housings.

OCM Bracket

The DENALI Outback Clip Management (OCM) bracket is for applications that require DENALI trunk cables to be mounted on the rack itself, rather than directly in the rear of the DENALI housing. The OCM bracket accommodates up to 12 DENALI outback clips/trunk cables and attaches directly on the rack above or below the DENALI housing (Figures 1 and 2).

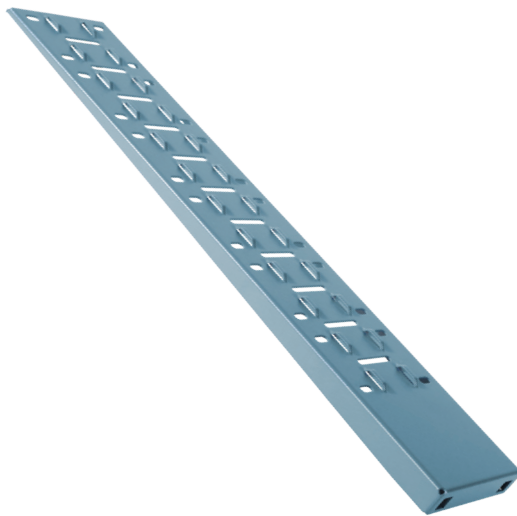


Figure 1. OCM Bracket

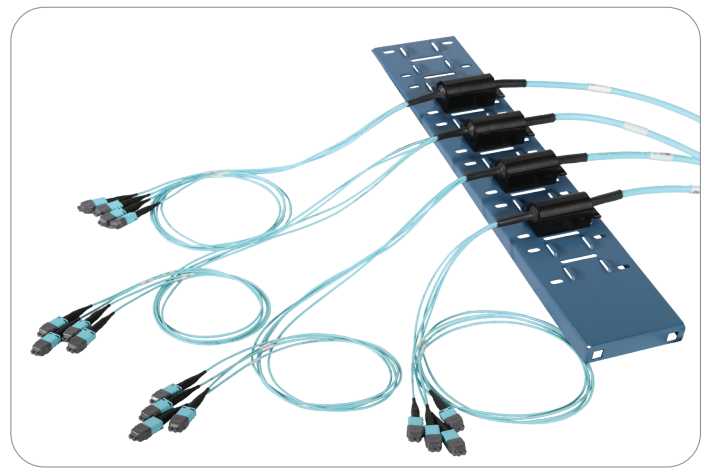


Figure 2. OCM Bracket with DENALI Trunk Cables

The bracket comes with two screws as well as cage nuts if the rack does not have threaded holes. On a two-post rack, the bracket mounts on the inside (rear) threaded hole portion of the rack, whereas the DENALI housing would mount on the outside (front) threaded hole pattern. The same would apply on a four-post rack to attach to the rear side of the front post of the rack. It is important to confirm the bracket depth of 490 mm is short enough to fit between the posts in a four-post rack.

Installation

It is recommended to mount the OCM bracket on a 19" rack 3-5 RUs above or below the DENALI housing relative to the bottom of the housing to achieve the correct trunk cable lengths inside the rear of the housing for 288 fiber and above trunk cables. The mounting location of the bracket is based on the location of the lower rack screw used to mount the bracket (Figure 3).

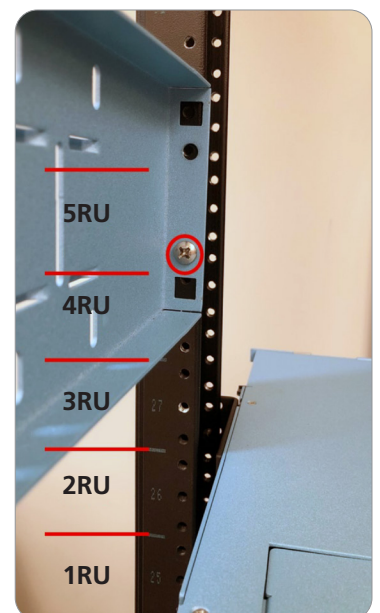


Figure 3. Lower rack screw position

Application Note

DENALI™ OCM Bracket

Installation (cont.)

OCM Bracket rack placement is outlined in the images below (Figures 4-7).

RU	4RU (REAR VIEW)	RU	RU	2RU (REAR VIEW)	RU	RU	1RU (REAR VIEW)	RU
20		20	20		20	20		20
19		19	19		19	19		19
18		18	18		18	18		18
17		17	17		17	17		17
16		16	16		16	16		16
15		15	15		15	15		15
14		14	14		14	14		14
13		13	13		13	13		13
12		12	12		12	12		12
11		11	11		11	11		11
10		10	10		10	10		10
9		9	9		9	9		9
8		8	8		8	8		8
7		7	7		7	7		7
6		6	6		6	6		6
5		5	5		5	5		5
4		4	4		4	4		4
3		3	3		3	3		3
2		2	2		2	2		2
1		1	1		1	1		1

Figure 4. OCM Bracket Mounting Location 3RUs Above Bottom of DENALI Housing

RU	4RU (REAR VIEW)	RU	RU	2RU (REAR VIEW)	RU	RU	1RU (REAR VIEW)	RU
20		20	20		20	20		20
19		19	19		19	19		19
18		18	18		18	18		18
17		17	17		17	17		17
16		16	16		16	16		16
15		15	15		15	15		15
14		14	14		14	14		14
13		13	13		13	13		13
12		12	12		12	12		12
11		11	11		11	11		11
10		10	10		10	10		10
9		9	9		9	9		9
8		8	8		8	8		8
7		7	7		7	7		7
6		6	6		6	6		6
5		5	5		5	5		5
4		4	4		4	4		4
3		3	3		3	3		3
2		2	2		2	2		2
1		1	1		1	1		1

Figure 5. OCM Bracket Mounting Location 4RUs Above Bottom of DENALI Housing

Application Note

DENALI™ OCM Bracket

Installation (cont.)

RU	4RU (REAR VIEW)	RU	RU	2RU (REAR VIEW)	RU	RU	1RU (REAR VIEW)	RU
20		20	20		20	20		20
19		19	19		19	19		19
18		18	18		18	18		18
17		17	17		17	17		17
16		16	16		16	16		16
15		15	15		15	15		15
14		14	14		14	14		14
13		13	13		13	13		13
12		12	12		12	12		12
11		11	11		11	11		11
10		10	10		10	10		10
9		9	9		9	9		9
8		8	8		8	8		8
7		7	7		7	7		7
6		6	6		6	6		6
5		5	5		5	5		5
4		4	4		4	4		4
3		3	3		3	3		3
2		2	2		2	2		2
1		1	1		1	1		1

Figure 6. OCM Bracket Mounting Location 5RUs Above Bottom of DENALI Housing

RU	4RU (REAR VIEW)	RU	RU	2RU (REAR VIEW)	RU	RU	1RU (REAR VIEW)	RU
20		20	20		20	20		20
19		19	19		19	19		19
18		18	18		18	18		18
17		17	17		17	17		17
16		16	16		16	16		16
15		15	15		15	15		15
14		14	14		14	14		14
13		13	13		13	13		13
12		12	12		12	12		12
11		11	11		11	11		11
10		10	10		10	10		10
9		9	9		9	9		9
8		8	8		8	8		8
7		7	7		7	7		7
6		6	6		6	6		6
5		5	5		5	5		5
4		4	4		4	4		4
3		3	3		3	3		3
2		2	2		2	2		2
1		1	1		1	1		1

Figure 7. OCM Bracket Mounting Location 3RUs Below the Bottom of DENALI Housing

Application Note

DENALI™ OCM Bracket

Installation (cont.)

If using the DENALI 4RU panel, trunk cable entry is available on both the bottom and the top of the panel. If using the bottom entry it is still recommended to mount the OCM bracket 3-5 RUs above or below the DENALI housing relative to the bottom of the housing. If using the top entry it is recommended to mount the OCM bracket 3-5 RUs above or below the DENALI housing relative to the **top** of the housing.

It is also recommended, if possible, to use bridge lance positions 4-6 in Figure 8 below if only using 1-3 cables as these align best with the cable entrance in the rear of the DENALI panel (Figure 9). If using more than 1-3 cables, it is recommended to align the cables on the bridge lances as close to the cable entrance as possible.

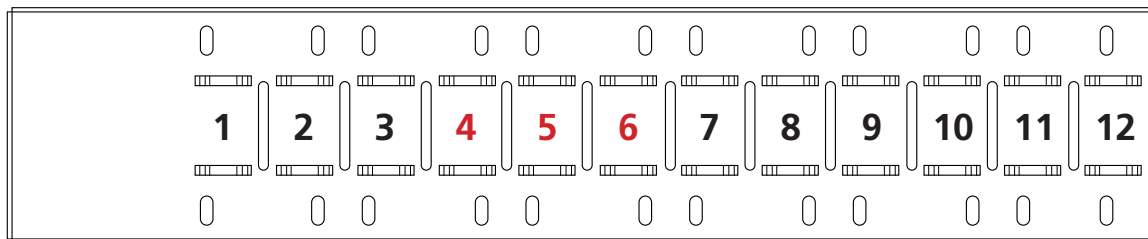


Figure 8. Recommended Bridge Lance Positions



Figure 9. Cable Entrance Alignment

Application Note

DENALI™ OCM Bracket

Multiple OCM Brackets

If using two OCM brackets on both sides of DENALI Housings to have the cables enter from both sides, it is recommended to alternate trunk cable installation on each side. For example, if installing six trunk cables into the rear of an DENALI 4RU, the first trunk cable should be installed on the left OCM bracket and routed into the back of the panel, then the second trunk cable should be installed on the right OCM bracket and routed into the back of the panel, then the third cable should be installed on the left OCM bracket and so forth so that trunk cables 1, 3 and 5 are installed on the left OCM bracket and trunk cables 2, 4 and 6 are installed on the right OCM bracket. This installation order will aid in effective cable routing in the rear of the panel (Figure 10).



Figure 10. Recommended Trunk Cable Installation Order