

## Fibre Optic Through Adapters



Also known as couplers, AFL's range of fibre optic through adapters provide a high performance interface for fibre optic networks.

AFL through adapters offer ease of circuit patching while maintaining industry leading performance. Through adapters are used in all fibre optic communication applications including Enterprise, Telecommunications, Industrial and Infrastructure.

Suited for use with AFL's range of:

- Fibre optic patchleads
- Fibre optic pre-terminated multi fibre assemblies
- Fibre optic pigtails
- FRE, FDE, FWE and FHE industrial enclosures

AFL through adapters are suited for multi environment patching scenarios where network performance, interoperability and long term stability are critical.

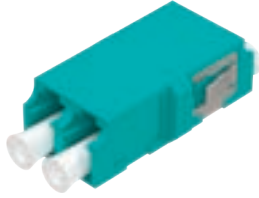
### Features

- Single piece moulded or ultrasonically welded construction for increased strength and durability
- SC and LC metal aperture latching clips provide superior mounting, negating internal clearance issues
- Reduced flange or standard flange design to suit a variety of mounting environments
- High performance zirconia alignment sleeves provide optimum network performance and stability
- Dust caps supplied as standard to minimise contamination
- Large range of standard and hybrid adapters stocked to cover a wide range of applications

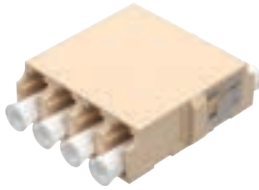
### Applicable Standards

- RoHS compliant
- Compliant adapter interface dimensions as per IEC 61754
- Suitable for both controlled and uncontrolled environments as detailed in IEC 61753-1-1
- Fibre Optic Connector Intermateability Standard TIA-604
- Colour coded to Telcordia and IEC standards

## Fibre Optic Through Adapters



LC Duplex Reduced Flange Adapter, Aqua



LC Quad Reduced Flange Adapter, Beige



SC Simplex Reduced Flange Adapter, Blue



SC Duplex Reduced Flange Adapter, Green



LC Duplex Standard Flange Adapter, Blue

### LC and SC Adapters

- SC adapters available in both simplex and duplex varieties
- LC adapters available in both duplex and quad varieties
- LC adapters utilise a SC mounting footprint
- Supports the use of retrofittable external shutters

### Specifications

Operating Temperature	-40° to +85°C
Durability	1000 mating cycles
Material	Body: PBT Dust Caps: PP Sleeve: Zirconia Clip: Stainless Steel

### Ordering Information

ADPT – SCD – RDF – BU

#### Adapter Type:

SC = SC Simplex  
SCD = SC Duplex  
LCD = LC Duplex  
LCQ = LC Quad

#### Adapter Body Style:

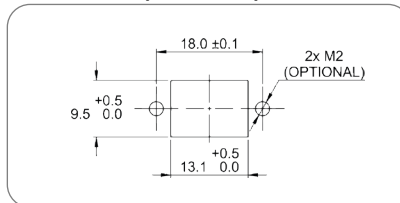
RDF = Reduced Flange  
STF = Standard Flange

#### Colour:

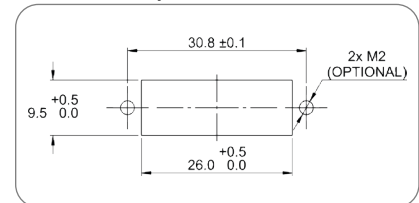
AQ = Aqua (Multimode OM3/4)  
BE = Beige (Multimode OM1)  
BU = Blue (Single-mode UPC)  
GN = Green (Single-mode APC)

### Port Size Diagrams

SC Simplex / LC Duplex Port



SC Duplex / LC Quad Port



Max. panel thickness of 1.7mm. All dimensions in mm.

## Fibre Optic Through Adapters



ST Simplex Double D Adapter Metal Body, Red



ST Simplex Double D Adapter Metal Body, Yellow



ST Simplex Double D Adapter Metal Body, no Dust Caps



FC APC Simplex Double D Adapter Metal Body, Yellow



FC APC Simplex Double D Adapter Metal Body, Green



FC APC Simplex Double D Adapter Metal Body, no Dust Caps

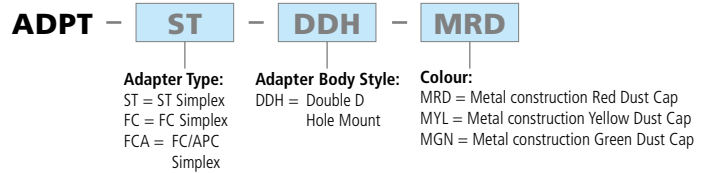
### ST and FC Adapters

- All metal construction, supplied with internal lock washer and nut
- Wide keyways for both FC and FCA adapters

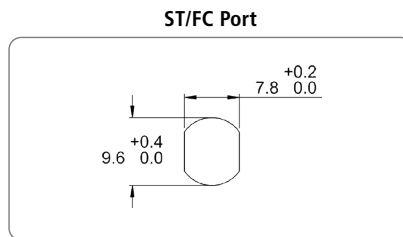
### Specifications

Operating Temperature	-40° to +85°C
Durability	1000 mating cycles
Material	Body: Nickel Plated Brass Dust Caps: PP/PVC Sleeve: Zirconia Washer: Stainless Steel Nut: Stainless Steel

### Ordering Information



### Port Size Diagram



Max. panel thickness of 2mm. All dimensions in mm.

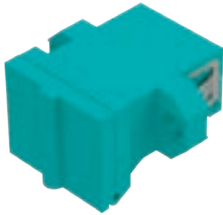
### Standard Colours:

- ST Yellow dust caps (Single-mode)
- ST Red dust caps (Multimode)
- FC Yellow dust caps (Single-mode, UPC & multimode)
- FCA Green dust caps (Single-mode APC)

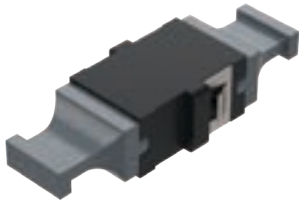
## Fibre Optic Through Adapters



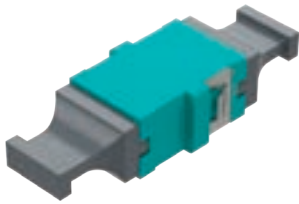
MTP Simplex Adapter, MTP Footprint, Standard Flange, Integrated Shutter, Black



MTP Simplex Adapter, MTP Footprint, Standard Flange, Integrated Shutter, Aqua



MTP Simplex Adapter, SC Footprint, Reduced Flange, Black



MTP Simplex Adapter, SC Footprint, Reduced Flange, Aqua

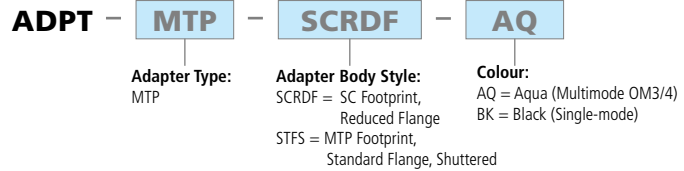
### MTP Adapters

- Fully compliant with MPO intermateability standards
- Available in MTP and SC mounting footprints
- Available with an integrated shutter

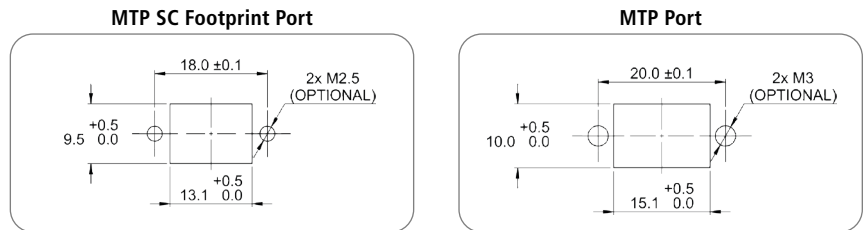
### Specifications

Operating Temperature	-40° to +85°C
Durability	500 mating cycles
Material	Body: PEI Dust Caps: PC Clip: Stainless Steel

### Ordering Information



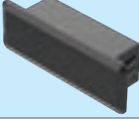

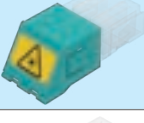

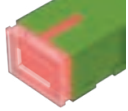
### Port Size Diagrams



Max. panel thickness of 1.7mm. All dimensions in mm.

## Fibre Optic Through Adapters

### Accessories

PART NUMBER	DESCRIPTION	SPECIFICATIONS	IMAGE
FAS0078-RDF	SC/LCD Port Blanking Plug	Dimensions: 16 (w) x 12 (h) x 10.5 (d) mm Panel thickness: 1.4 - 3.5mm Material: Nylon 6/6	
FAS0079	SCD/LCQ Port Blanking Plug	Dimensions: 34.8 (w) x 12 (h) x 10.5 (d) mm Panel thickness: 1.4 - 3.5mm Material: Nylon 6/6	
FAS0077	ST/FC Double D Port Blanking Plug	Dimensions: 12 ø x 10.5 (d) mm Panel thickness: 1.4 - 3.5mm Material: Nylon 6/6	
LCD6CSHCOVER*	LC Duplex External Shutter, Aqua	Dimensions: 14.1 (w) x 12.8 (h) x 18.2 (d) mm Material: Engineering plastic and stainless steel	
LCD3CSHCOVER	LC Duplex External Shutter, Beige		
LCD1CSHCOVER	LC Duplex External Shutter, Blue		
LCAD1CSHCOVER	LC Duplex External Shutter, Green		
SC6CSHCOVER	SC Simplex External Shutter, Aqua	Dimensions: 17 (w) x 10.8 (h) x 15.6 (d) mm Material: Engineering plastic and stainless steel	
SC3CSHCOVER	SC Simplex External Shutter, Beige		
SC1CSHCOVER*	SC Simplex External Shutter, Blue		
SCA1CSHCOVER	SC Simplex External Shutter, Green		
DUSTCAP-LCDADPT	LC Duplex Dust Cap	Material: TPV	
DUSTCAP-SCADPT-CLR	SC Simplex Dust Cap, Clear	Material: PP	

\*Indicates shown item

### Specialty Adapters

In addition to standard connectivity, AFL are also able to provide a range of specialty adapters and accessories to suit a wide range of specific applications.

Including:

- Internally shuttered
- Hybrid adapters
- Specialty colours

Please contact AFL for availability and additional information.

