

## FlexApp on Android Device— Wireless Transfer of FlexScan® FS200/TS100 Results to FlexReports for Easy Reporting

**Note:** Former FlexScan App users need to remove FlexScan App prior to using FlexApp. Running both Apps on your device can cause data to be sent incorrectly or lost.

**On Android Device** 1 **Enable Bluetooth**

From Settings, go to Bluetooth

Enable Bluetooth

Make your mobile device visible

**On FlexScan** 2 **Enable Bluetooth to allow pairing**

Go to Settings

Tap Bluetooth to display Bluetooth settings

Enable Bluetooth and note FS200/TS100 name

**On Android Device** 3 **Launch App**

**On FlexApp** 4 **Log in to FlexReporter-Cloud then pair Android device to FlexScan**

Tap cloud to display login to FlexReporter-Cloud

Log in to FlexReporter-Cloud

Tap Bluetooth

Tap on your FlexScan name to connect

Confirm pairing

**On FlexScan** 5 **Finish Pairing**

Confirm passkey

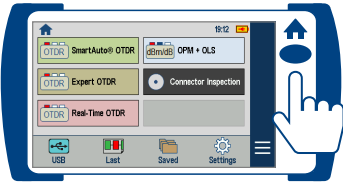
**On FlexApp** 6 **Files are ready to transfer**

Ready to transfer files

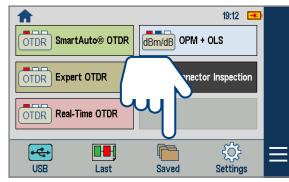
## FlexApp on Android Device— Wireless Transfer of FlexScan® FS200/TS100 Results to FlexReports for Easy Reporting

### 7 Select and transfer test results, file(s) or folder(s), from FS200/TS100 to FlexReporter-Cloud

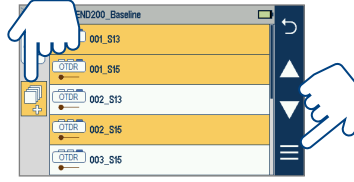
On FlexScan



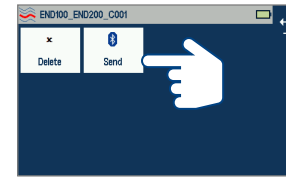
Press Home to return to the Home screen



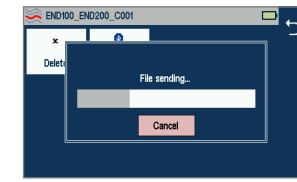
Go to Saved Files



- Touch & hold to select a single file
- Or, touch to select multiple files, then touch 3-bar Menu

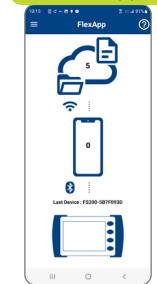


Touch Send to transfer selected files



Note transfer progress

On FlexApp



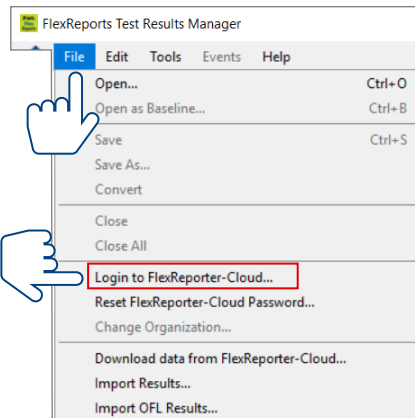
App indicates number of transferred files

### 8 Downloading Results from FlexReporter-Cloud

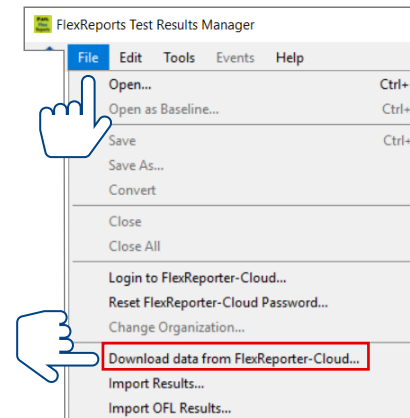
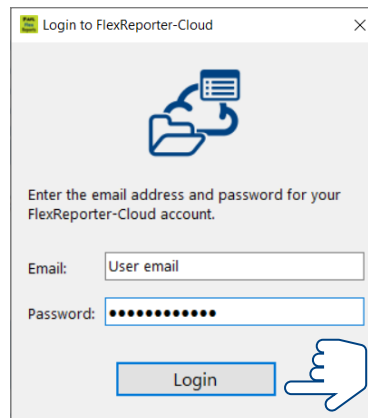
On FlexReports



Launch FlexReports Test Results Manager



From FlexReports Home screen menu, click File and click 'Log in to FlexReporter-Cloud'



Click 'Download data from FlexReporter-Cloud'. Navigate and select the desired folder with results for download, then click "Download."

