

## FlexApp on Android Device — Wireless Transfer of FlexScan® FS300 Results to FlexReports for Easy Reporting

**Note:** Former FlexScan App users need to remove FlexScan App prior to using FlexApp. Running both Apps on your device can cause data to be sent incorrectly or lost.

**On Android Device 1 Enable Bluetooth**

From Settings, go to Bluetooth

Enable Bluetooth

Make your mobile device visible

**On FlexScan 2 Enable Bluetooth to allow pairing**

Go to Settings

Tap Bluetooth to display Bluetooth settings

Enable Bluetooth and note FS300 name

**On Android Device 3 Launch App**

**On FlexApp 4 Log in to FlexReporter-Cloud then pair Android device to FlexScan**

Tap cloud to display login to FlexReporter-Cloud

Log in to FlexReporter-Cloud

Tap Bluetooth

Tap on your FlexScan name to connect

Confirm pairing

**On FlexScan 5 Finish Pairing**

Confirm passkey

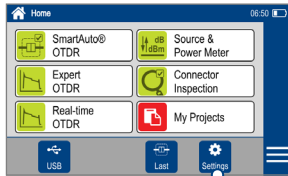
**On FlexApp 6 Files are ready to transfer**

Ready to transfer files

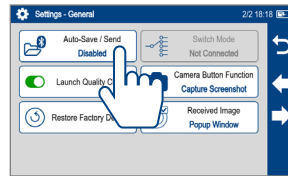
## FlexApp on Android Device — Wireless Transfer of FlexScan® FS300 Results to FlexReports for Easy Reporting

### 7 Select and transfer test results, file(s) or folder(s), from FS300 to FlexReporter-Cloud

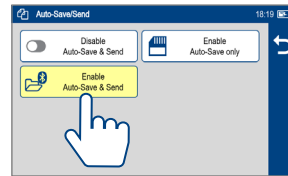
**Choice I :** Enable Auto Save & Send for subsequent tests to auto-transfer results to FlexReporter-Cloud



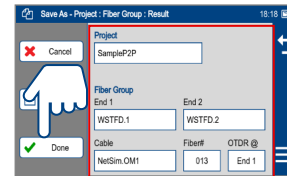
Go to Settings



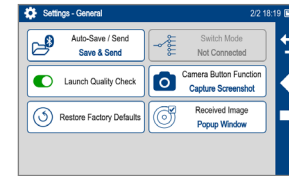
Select Auto-Save/Send



Enable Auto-Save & Send

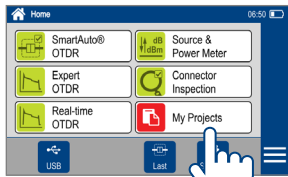


Configure destination, then touch Done

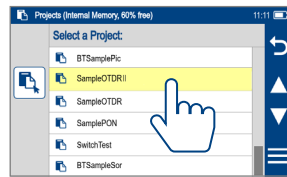


Enabled Auto Save & Send. As subsequent tests complete, results are automatically sent to paired device.

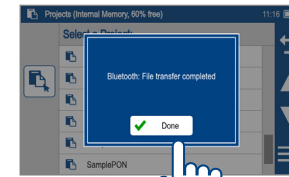
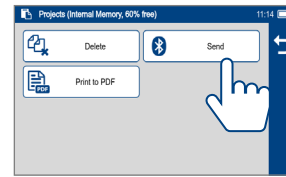
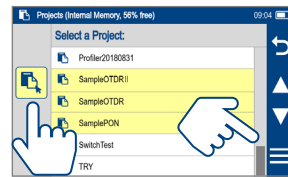
**Choice II :** Manually select and transfer test results - file(s) or folder(s) to FlexReporter-Cloud



Display Projects



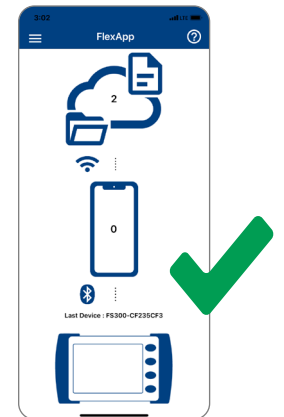
- Touch and Hold to select a test result; Or Touch "Select Files" icon, then touch files or folders to be sent
- Touch 3-bar Menu, then touch Send to transfer selected data.



Touch Done

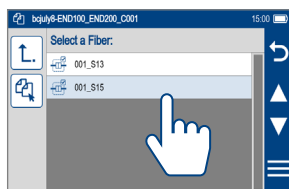
### 8 Files are ready to transfer

On FlexApp

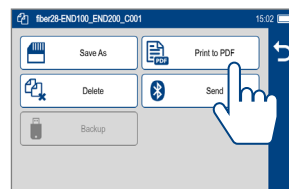


App will indicate number of transferred files

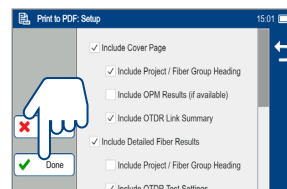
### On FlexScan Sharing Results and Print to PDF Files from FlexScan: Not logged into FlexReports-Cloud



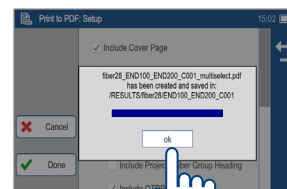
Long press on selected fiber



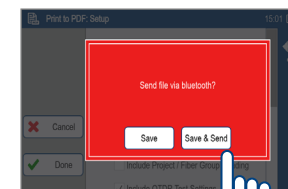
Select Print to PDF



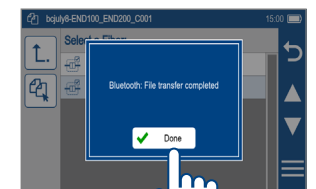
Configure Print to PDF, then select Done



Tap OK



Select Save & Send



Tap Done

## FlexApp on Android Device — Wireless Transfer of FlexScan® FS300 Results to FlexReports for Easy Reporting

### On FlexApp | Sharing Results and Print to PDF Files from FlexApp

**Note:** FlexApp is defaulted to delete files from the device after sending them to FlexReporter-Cloud. Before sharing files from the App make sure you change the settings to keep files on your device.

Tap Menu      Tap Settings      Deselect the file types to remain on device      Tap on smart device icon to access files on device      Select file to view      Print to PDF report      Tap file options      Select Share      Email report

### On FlexReports | Downloading Results from FlexReporter-Cloud

Launch FlexReports Test Results Manager      From FlexReports Home screen menu, click File and click 'Log in to FlexReporter-Cloud'      Click 'Download data from FlexReporter-Cloud'. Navigate and select the desired folder with results for download, then click "Download"