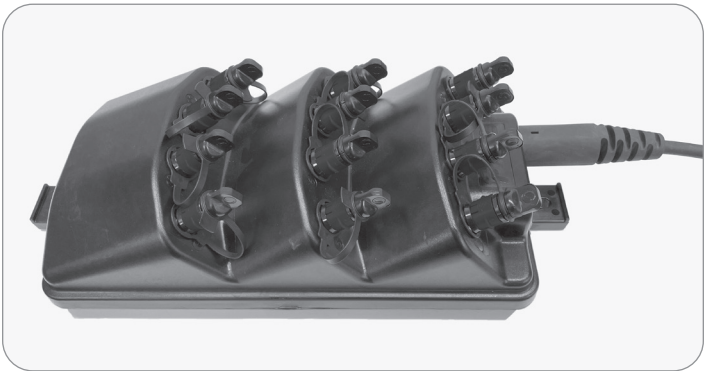


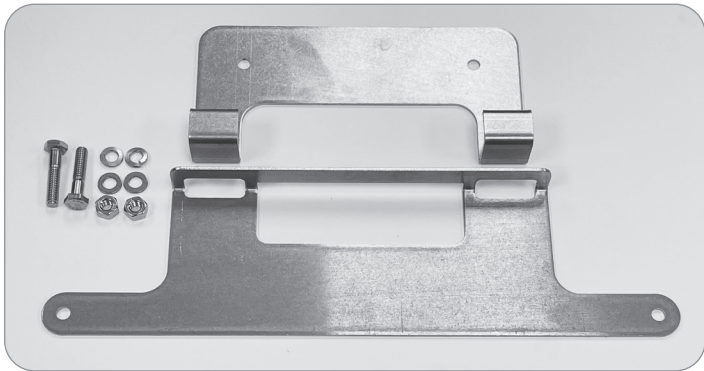


# INSTALLATION INSTRUCTIONS

*Handhole Hanging Bracket Kit*  
*For AFL RTD™ Terminal Powered By Prodigy®*



AFL RTD® Terminal



Handhole Hanging Bracket Kit

## TABLE OF CONTENTS

GENERAL .....	2
PACKAGE CONTENTS .....	2
RECOMMENDED TOOLS .....	2
FIBER HANDLING GUIDELINES .....	2
HANGING BRACKET INSTALLATION INSTRUCTIONS.....	2

## GENERAL

Used with the AFL RTD® Terminal powered by Prodigy®, the Handhole Hanging Bracket Kit allows for quick installation of the terminal in a handhole or other location as desired. The two-piece design allows for easy installation of the mount bracket with the ability to remove the terminal as needed in the future. The pivoting bracket allows easy access to each port for drop installation once installed.

## PACKAGE CONTENTS

- A. Handhole Bracket
- B. Terminal Bracket
- C. Mounting Hardware

## RECOMMENDED TOOLS

- Safety Glasses
- 7/16 wrench, 216 tool or equivalent
- Drill (optional)

## FIBER HANDLING GUIDELINES

- ⚠ Caution: Fiber optic cable is susceptible to damage from excessive bending, pulling or crushing forces. At every stage of the installation process ensure that the fiber bundles or loose buffer tubes are free from unintentional cuts, nick or bends to avoid potential fiber damage**

## BRACKET INSTALLATION

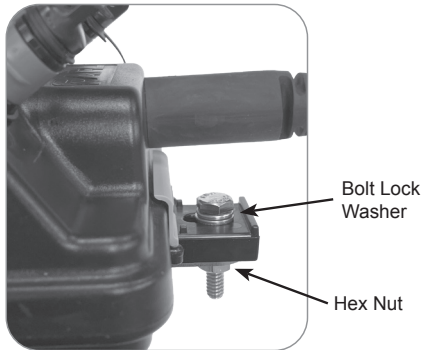
Prior to bracket installation, insure there is clearance for the feeder cable and outgoing drops. Make sure there will be no pinch points or extreme bends for feeder or drops to be installed.

1. Level and mark 2 mounting holes for Mount Hanger Bracket “A” - 5” Center to Center.
2. Drill if needed for mounting hardware – *not supplied*.
3. Mount Hanger Bracket “A”, shown in **Figure 1**.

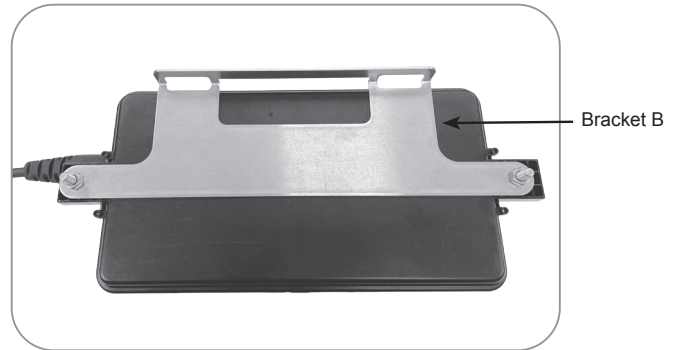


**Figure 1**

4. Attach Terminal Bracket “B” to the terminal using supplied bolts, washers, and nuts as shown in **Figure 2**.



**Figure 2**



**Figure 3**

5. Secure bolts with 216 tool or 7/16” equivalent tool.  
6. Hang Bracket “B” onto Bracket “A” as shown in **Figure 4**.



**Figure 4**

⊛ **Note:** To avoid excessive side pressure to the ports on the AFL RTD® Terminal powered by Prodigy®, the hardened drop cables should always follow the same routing path as the stub for the terminal. Always ensure that there is adequate space in the handhole to route the cables without violating the cable’s long-term minimum bend radius.