

DENALI™ PLATFORM

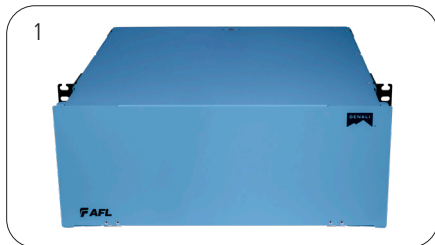
INSTALLATION INSTRUCTIONS

TABLE OF CONTENTS

RACK MOUNTING	1
23" MOUNT INSTALLATION	1
CASSETTE INSTALLATION	2
PATCH CORD INSTALLATION.....	2
TRUNK CABLE INSTALLATION	3
CABLE MOUNTING BRACKET INSTALLATION	3
LC UNIBOOT REVERSIBILITY.....	3
MTP® PRO REVERSIBILITY	4

RACK MOUNTING

MATERIALS



1. DENALI Housing
2. Rack Mounting Hardware

INSTRUCTIONS

The DENALI housing is optimized for use with a 19" rack or cabinet with standard rails that meet the EIA/ECA Standard for Cabinets, Racks, Panels, and Associated Equipment. Note that mounting in a 23" rack requires an optional mounting hardware kit. It is recommended to start from the bottom of the rack or cabinet if the intention is to completely fill the rack or cabinet with DENALI housings.

1. Determine the desired rack position on which to mount the housing within the rack or cabinet.
2. Partially install two mounting screws at the lowest position within the selected rack position at the lowest point within the selected rack position on the rack. Be sure to leave enough space between the head of the screw and the rack rail to accommodate the thickness of the housing mounting brackets.
3. Place the housing between the rails on the rack while aligning the bottom slots of the mounting bracket over the partially installed mounting screws. Once aligned over the screws, the weight of the housing can be released. Install additional screws to the mounting bracket for stability.
4. Tighten all screws completely. (Figure 1)



Figure 1

23" MOUNT INSTALLATION

1. Remove and set aside the 4 screws on the 19" mounting bracket on the DENALI housing and remove the 19" mounting bracket. (Figure 2)
2. Line up the 23" mounting bracket over the mounting holes and install the 4 screws. (Figure 3).
3. Repeat for the other side.

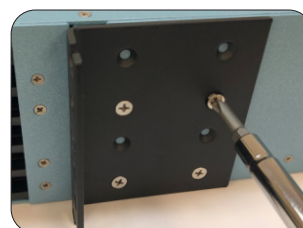


Figure 2



Figure 3

CASSETTE INSTALLATION

This installation guide is applicable for any DENALI cassette. Cassettes can be inserted from the front or rear of the housing. It is recommended to begin cassette installation from the bottom and fully populate each tray before moving upward.

FRONT INSTALLATION INSTRUCTIONS

1. Pull out the desired installation tray. A hard stop will be felt when the tray reaches the correct installation position. **(Figure 4)**
2. Align the cassette within the guides inside of the tray and push the cassette into the tray. **(Figure 5)**
You should hear a click when the cassette locks in place.
3. To release the cassette from the front of the tray, pull out on the release lever and slide the cassette out of the tray guides. **(Figure 6)**

NOTE: If desired, the cable management clips can be removed by pinching the front of the clip, rocking it up and pulling directly out. Cassettes can be installed with or without the clips installed.

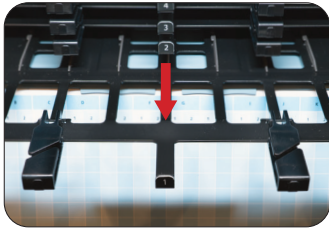


Figure 4

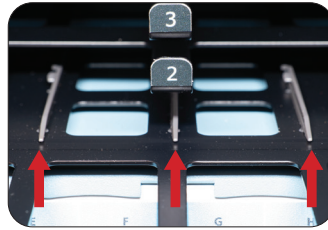


Figure 5

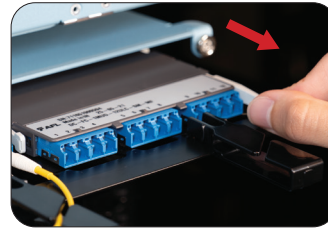


Figure 6

REAR INSTALLATION INSTRUCTIONS

1. Ensure that the front door of the housing is closed.
2. Open the rear door of the housing.
3. For easier access to trays in the 1RU and 2RU, remove the rear housing cover by unscrewing the two thumbscrews. **(Figure 7)**
4. Align the cassette with the guides inside of the tray and push the cassette into the tray **(Figure 8)**. You should hear a click when the cassette locks in place.
5. To release the cassette from the rear of the tray, pull on the release lever and slide the cassette back toward you. **(Figure 9)**



Figure 7



Figure 8

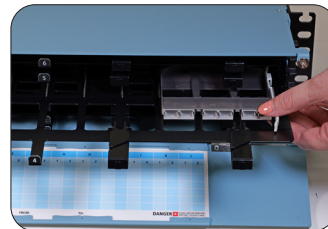


Figure 9

PATCH CORD INSTALLATION

1. Pull out the desired installation tray. A hard stop will be felt when the tray reaches the correct installation position.
2. Remove the connector dust cap. Clean connectors and adapters using AFL's Cletoip Connector Cleaner or One-Click® Cleaner. Follow the instructions provided with the tools.
3. While holding the extension tab on the latch mechanism, plug the connector in to the desired port by pushing on the latch mechanism. **(Figure 10)**
4. Route the cable one at a time through the cable management clips. **(Figure 11)**

NOTE: The cables can all be routed to one side of the housing or can be split by routing half to the left and half to the right of the housing.

5. To remove the connector, pull on the latch mechanism. **(Figure 12)**

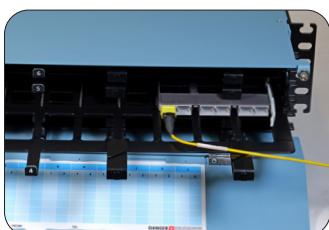


Figure 10

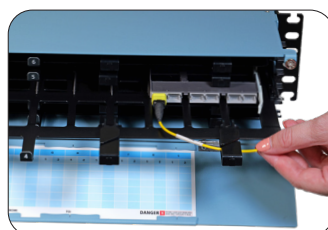


Figure 11



Figure 12

TRUNK CABLE INSTALLATION

1. If desired for the 1RU and 2RU, remove the rear housing cover by unscrewing the two thumbscrews. (Figure 7)
2. Bring the trunk cable in through the desired side of the DENALI housing.
3. There are two (2) Outback Clip options for securing the Outback Clip – "rock and lock" and "hook and loop" straps.
 - a. With the Outback Clip in the T-lance position, rock and lock it into place. (Figure 16)
 - b. If using the hook and loop option, fasten to the lance forms and secure the hook and loop ribbon.
4. If it is required to release the outback clip, pull out on the lever and the rock the clip up and out of the lance forms. (Figure 14). Or undo the ribbon to remove from the lance forms.
5. With the outback clip locked into place, remove the connector and adapter dust caps. Clean connectors and adapters using AFL's Cletop Connector Cleaner or One-Click® Cleaner. Follow the instructions provided with the tools.
6. Route the fiber in an S-shape manner to make the connections to the cassettes.
7. Loosely applying Velcro to fiber groups provides further cable management and organization.
8. To provide ease in cable routing, each row should be fully populated beginning with the bottom most tray before moving upward to the next.

NOTE: The 4RU Housing features a fixed top with additional lances for mounting trunk cables. For top installation, please follow methods as noted above in steps 1-8.

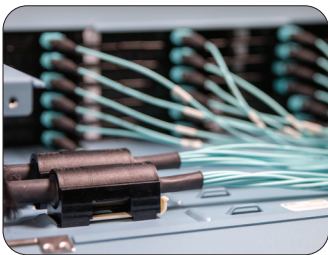


Figure 13

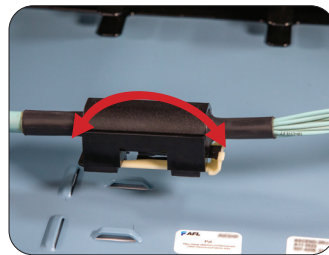


Figure 14

CABLE MOUNTING BRACKET INSTALLATION

1. Attach the bracket base to the DENALI housing above the brush guard using 2 of the 4 screws provided. (Figure 15)
2. Secure the incoming cable to the clamp. If the cable is too narrow, wrap it with foam tape prior to insertion into the clamp and secure the cable clamp to the bracket base using two (2) screws. (Figure 16)



Figure 15



Figure 16

LC UNIBOOT REVERSIBILITY

1. Flip the connector over so that you are looking at the white body of the connector. (Figure 17)
2. Unlatch the push-pull tab from the body of the connector by pushing the tab in the slot to the left. (Figure 18)
3. Pull the push-pull tab away from the body of the connector. (Figure 19)
4. Once the push-pull tab has been removed from the body, reinsert the tab on the opposite side of the connector body. (Figure 20)



Figure 17

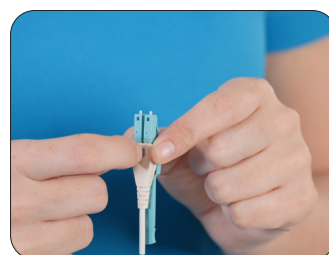


Figure 18

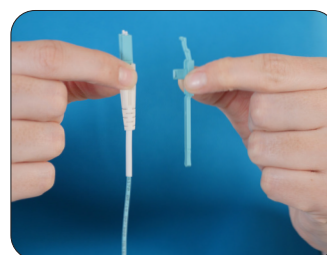


Figure 19



Figure 20

MTP® PRO REVERSIBILITY*

FEMALE-TO-MALE GENDER CHANGE

1. Place the connector inside of the port on the MTP Pro Field Tool that is labeled "pin." A click should be heard (**Figure 21**).
2. Remove the pin holder from the MTP Pro Field Tool. Ensure that the holder is populated with pins (**Figure 22**).
3. Place the pin holder inside of the port labeled "Exchanger" (**Figure 23**).
4. Remove the pin holder (**Figure 24**).
5. Remove the connector.



Figure 21

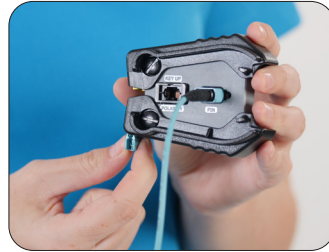


Figure 22



Figure 23



Figure 24

MALE-TO-FEMALE GENDER CHANGE

1. Place the connector inside of the port on the MTP Pro Field Tool that is labeled "pin." A click should be heard (**Figure 25**).
2. Remove the empty pin holder from the MTP Pro Field Tool (**Figure 26**).
3. Place the pin holder inside of the port labeled "Exchanger" (**Figure 27**).
4. Slide the green tool (included with the MTP Pro Field Tool) onto the pin holder (**Figure 28**).
5. Squeeze down on the MTP Pro Field Tool (**Figure 29**).
6. Squeeze the handles on the green tool (**Figure 30**).
7. Pull the pin holder out of the port (**Figure 31**).
8. Release the MTP Pro Field Tool (**Figure 32**).
9. Remove the connector from the port.



Figure 25



Figure 26



Figure 27



Figure 28

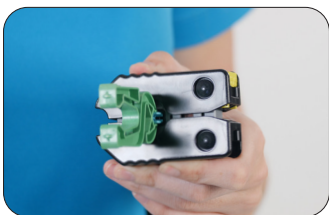


Figure 29



Figure 30



Figure 31



Figure 32

POLARITY CHANGE

1. Insert the connector key up into the port on the MTP Pro Field Tool that is labeled "Polarity." A click will be heard when the connector is properly installed (**Figure 33**).
2. Remove the connector from the port.



Figure 33

*These instructions apply to Multimode applications only