



# INSTALLATION INSTRUCTIONS

*Retrofit Cable Manager (1RU, 2RU and 6RU)*



## RECOMMENDED TOOLS

Screwdriver



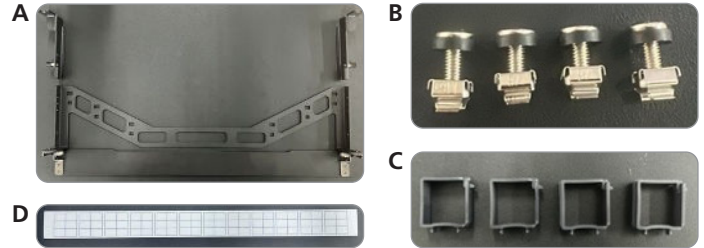
## TABLE OF CONTENTS

RETROFIT CABLE MANAGER 1RU.....	2
RETROFIT CABLE MANAGER 2RU.....	3
RETROFIT CABLE MANAGER 6RU .....	4

## 1RU INSTRUCTIONS *(Using Ultraslim 1RU V-Panel Base-8 144f)*

### PACKAGE CONTENTS

- Left & Right Side Tray Guides (Long)
- Pre-assembled V-Tray w/ 1RU Door (A)
- Four (4) M6 Cage Nuts & (4) M6x16mm Pan Head Screws (B)
- Six (6) Cable Guides (C)
- 1U Door Label (D)



### PANEL AND TRAY GUIDE INSTALLATION:

1. Install cage nuts at top and bottom of desired panel location (Figure 1).
2. Install panel using the lower mounting screws, leaving them loose (Figure 2).
3. Install the left tray guide and tighten screws (Figure 3).
4. Install the right tray guide, leaving screws loose enough to adjust the tray guide side-to-side (Figure 4).

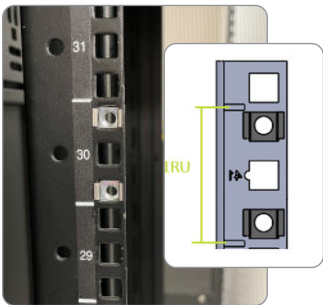


Figure 1

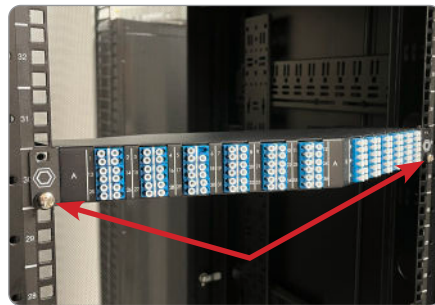


Figure 2



Figure 3

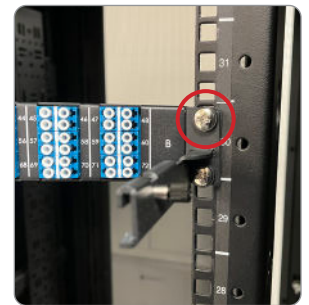


Figure 4

### TRAY INSTALLATION:

1. Insert pre-assembled V-tray and door into tray guides to the furthest locking position. Tighten adjustment screws to lock in place and ensure proper alignment (Figure 5).
2. Tighten right side tray guide screws (Figure 6).
3. Loosen adjustment screws and slide tray to desired position (Figure 7).
4. Tighten adjustment screws and install cable guides (Figure 8).



Figure 5



Figure 6



Figure 7

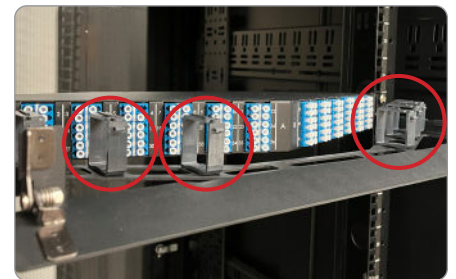
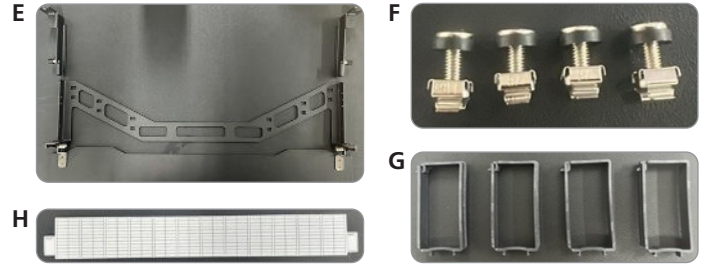


Figure 8

## ULTRASLIM 2RU INSTRUCTIONS *(Using FVP 2RU Front-Access V-Panel)*

### PACKAGE CONTENTS

- Left & Right Side Tray Guides (Long)
- Pre-assembled V-Tray w/ 2RU Door (E)
- Six (6) M6 Cage Nuts & (6) M6x16mm Pan Head Screws (F)
- Six (6) Cable Guides (G)
- 2U Door Label (H)



### PANEL AND TRAY GUIDE INSTALLATION:

1. Choose desired panel location and install cage nuts based on your panel brackets.
  - a. For panels with smaller, central brackets, install as seen in **Figure 9a**.
  - b. For brackets that span the full 2RU height, install as seen in **Figure 9b**. Note that this will affect the installation process.
2. Install panel using the lower mounting screws, leaving them loose (**Figure 10**).
3. Install the left tray guide and tighten screws (**Figure 11**).
4. Install the right tray guide, leaving screws loose enough to adjust the tray guide side-to-side (**Figure 12**).



Figure 9a

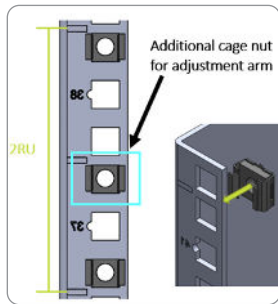


Figure 9b



Figure 10



Figure 11



Figure 12

### TRAY INSTALLATION:

1. Insert pre-assembled V-tray and door into tray guides to the furthest locking position. Tighten adjustment screws to lock in place and ensure proper alignment (**Figure 13**).
2. Tighten right side tray guide screws (**Figure 14**).
3. Loosen adjustment screws and slide tray to desired position (**Figure 15a and 15b**).
4. Tighten adjustment screws and install cable guides (**Figure 16**).



Figure 13



Figure 14



Figure 15a



Figure 15b

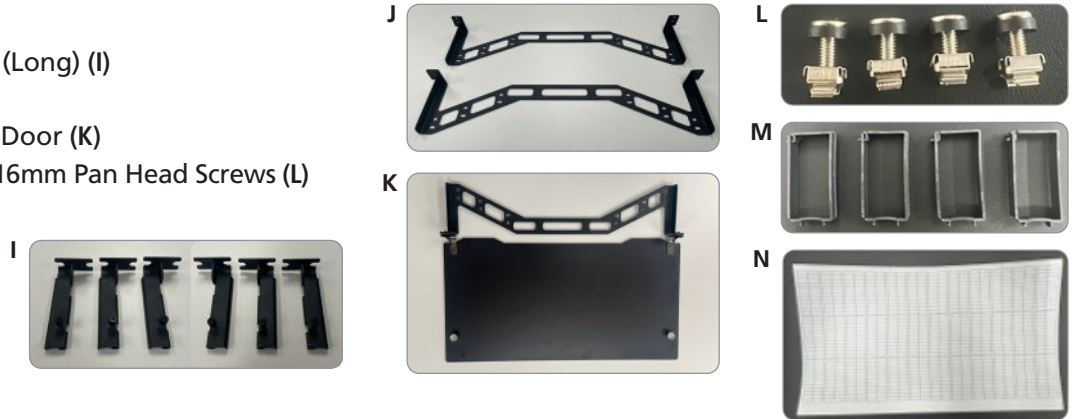


Figure 16

## ULTRASLIM 2RU INSTRUCTIONS *(Using FVP 6RU Splice and Patch Panel)*

### PACKAGE CONTENTS

- Left & Right Side Tray Guides (Long) (I)
- Two (2) V-Trays (J)
- Pre-assembled V-Tray w/ 6RU Door (K)
- (12) M6 Cage Nuts & (12) M6x16mm Pan Head Screws (L)
- (18) Cable Guides (M)
- 6U Door Label (N)



### PANEL AND TRAY GUIDE INSTALLATION:

1. Choose desired panel location and install cage nuts (Figure 17).
2. Loosely install 2 screws (Figure 18) and install 6RU panel.
3. Install all left side tray guides, starting with the bottom screws for each tray guide arm, and tighten screws (Figure 19).
4. Install all right side tray guides, starting with the bottom screws for each tray guide arm (Figure 20).
  - a. Leave screws loose enough to adjust the tray guide position side-to-side.

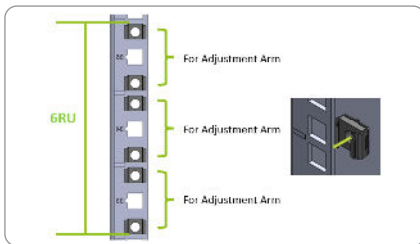


Figure 17

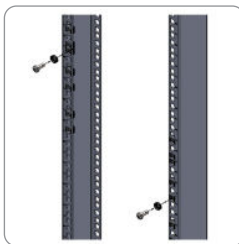


Figure 18



Figure 19

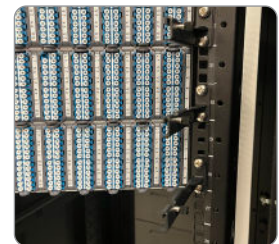


Figure 20

### TRAY INSTALLATION:

1. Starting at the bottom tier, insert a V-tray (without door assembly) into the tray guides to the furthest locking position. Tighten adjustment screws to lock in place (Figure 21a and 21b).
2. With the V-Tray installed, tighten right side tray guide screws (Figure 22).
3. For the bottom tier, remove the standard V-Tray and replace with the door assembly, inserting to the desired location (Figure 23). For other tiers, loosen adjustment screws and slide tray to desired position.
4. Tighten adjustment screws and install cable guides (Figure 24).
5. Repeat process for all 3 tiers (Figure 25).



Figure 21a



Figure 21b



Figure 22



Figure 23

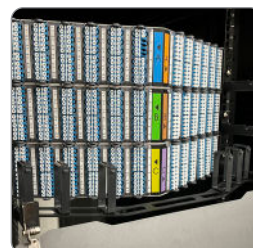


Figure 24



Figure 25