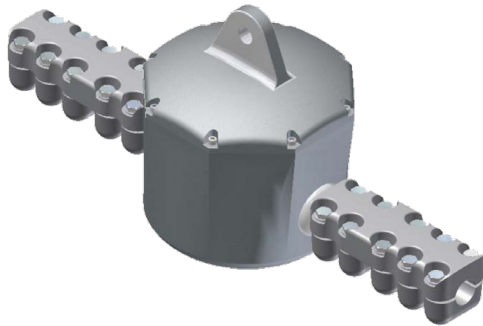


OPPC JOINT BOXES

Optical Phase Conductor (OPPC) Joint Boxes are designed to connect two OPPC fibre optic cables. These boxes must be installed without having contact to tower structure. They can be connected to a hanging insulator at suspension towers or in the loop between two insulators at tension towers.

JOINT BOX DESIGNS



CJB-1



CJB-3

OPPC entries	2
OPPC / steel tube diameter (mm)	10-39 / 2.5-3.5
Number of splices (FiberArt™)	144 crimp or 72 heat shrinkable

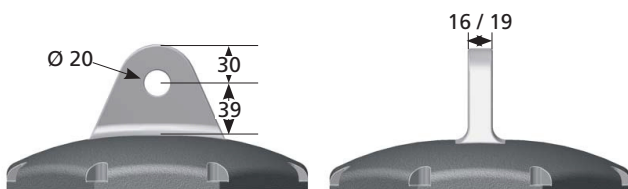
OPPC entries	2
OPPC / steel tube diameter (mm)	10-21 / 2.5-3.5
Steel tubes per OPPC	3
Number of splices (FiberArt™)	144 crimp or 72 heat shrinkable

CHARACTERISTICS

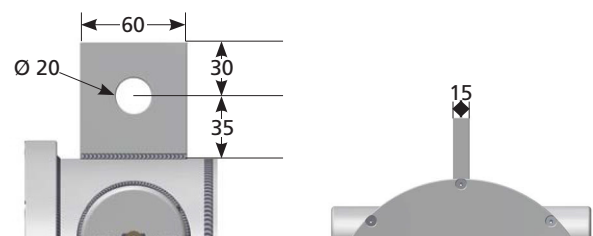
		TERMINATION SPLICE	SELF SUPPORTING INLINE SPLICE
Tension U_M	kV	36-245	24-123
Short time current, I^2t	kA ² s	3600	3600
Total height (incl. mounting eye)	mm	314.5	240 (295)
Width, S (OPPC, Ø: 10 - 28 mm)	mm	612	
Width, L (OPPC, Ø: 28 - 39 mm)	mm	674	
Total width	mm		405
Width, main body	mm		240
Depth	mm		108
Weight (approx.)	kg	15	10

DIMENSIONS OF FIXINGS (MM)

MOUNTING EYE - CJB-1



MOUNTING EYE - CJB-3



OPPC JOINT BOX IDENTIFICATION

CJB	3	N	-E
Type	1 = Universal	S = 2 x OPPC, Ø 10 - 28 mm L = 2 x OPPC, Ø 28 - 39 mm, M = mixed	E = including mounting eye
	3 = Limited voltages	N = 2 x OPPC, Ø: 10 - 21 mm M = 2 x OPPC, Ø: 10 - 21 mm, mixed	EE = Fixing eye, width

Example: CJB-1-5-19 or CJB-3-N-E