

## Pre-Terminated Premise Cable Assemblies



AFL's Pre-Terminated Premise Cable Assemblies provide a high-performance, customisable solution for any fibre installation. Utilising several cable construction types, Indoor/Outdoor and Tactical Tight Buffer, as well as Micro Cable, our cable assemblies cater to any network requirement, for both inside plant (ISP) and outside plant (OSP) environments.

Pre-terminated cables offer the advantage of reduced turn up and cost associated with on-site cable breakout and connector terminations. They are ideally suited where narrow installation time-frames are applicable or on-site terminations are hazardous or encounter OH&S issues.

Used in conjunction with AFL's fibre management systems, our pre-terminated cable assemblies provide a reliable, high-performance solution for a range of network requirements and applications.

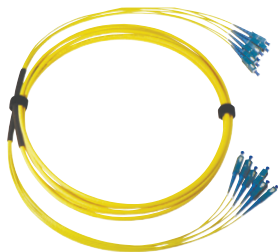
### Features

- Available in a range of cable and fibre types for ISP and OSP installations.
- High quality, machine polished connectors for consistent low loss performance.
- Configurable options to suit installation requirements.

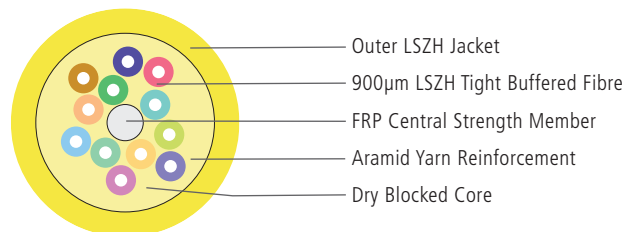
### Applications

- Structured cabling networks
- Intra-building networks
- Intra-rack connectivity

## Indoor/Outdoor Tight Buffered Cable Assembly Configurations



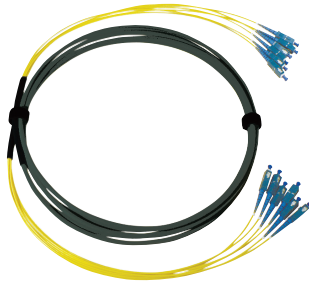
Indoor/Outdoor Tight Buffered assemblies feature a LSZH outer jacket and 900µm tight buffered fibres, in fibre counts of 2 up to 24. These assemblies can be broken out to either 900µm fibres or over-sleeved with 2 mm furcation tubing for added protection. For outdoor applications, the cable incorporates dry water blocking properties suitable for protected use in external covered tray or free draining conduit.



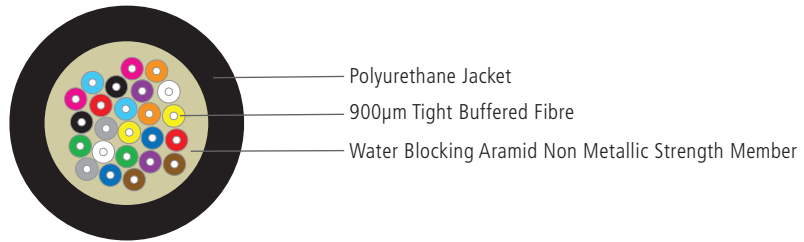
For cable information, refer to our Indoor/Outdoor Premise Tight Buffered Cable datasheet.

## Pre-Terminated Premise Cable Assemblies

### Tactical Tight Buffered Cable Assembly Configurations

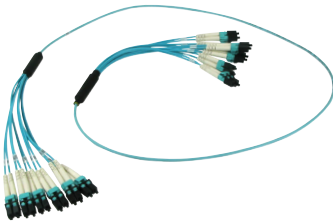


Tactical Tight Buffered assemblies feature a UV and water-resistant polyurethane outer jacket, with 900µm tight buffered fibres, in fibre counts of 2 up to 24. These assemblies can be broken out to either 900µm fibres or over-sleeved with 2mm furcation tubing for added protection. Suitable for high traffic areas or exposed cable applications where a robust solution is required.



For cable information, refer to our Tactical Tight Buffered Cable datasheets.

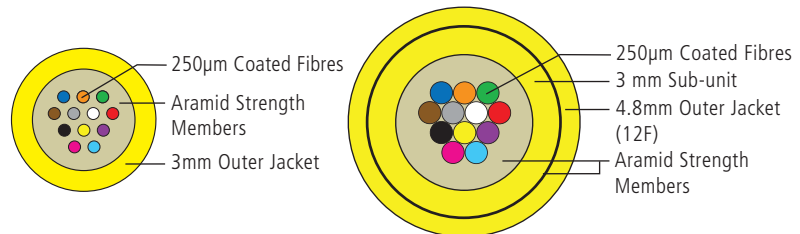
### Micro Cable Assembly Configurations



Micro Cable assemblies are available in either a single element 3mm or 4.8/4.5mm ruggedised double jacket cable type. Both cable types feature 250µm coated fibres and LSZH jacket materials. The fibres are oversleeved with 2mm furcation tubing for added protection. These assemblies are the ideal choice for high density installations and low traffic areas.

#### Single Element 12F, 3 mm

#### Ruggedised 12F, 4.8 mm



For cable information, refer to our Indoor Premise Micro Cable datasheet.

FANOUT MODULE	
TAIL CONFIG.	MAX. O.D. (mm)
12 x 2mm tails	ø19.3
24 x 2mm tails	ø24.3

### Connector Specifications

#### Discrete Connectors (SC,LC,ST,FC)

OPTICAL PERFORMANCE	VALUE	TEST METHOD
Insertion Loss (Max.)	≤ 0.25 dB	IEC 61300-3-4
Return Loss (SM,UPC)	≥ 55 dB	IEC 61300-3-6
Return Loss (SM,APC)	≥ 65 dB	IEC 61300-3-6

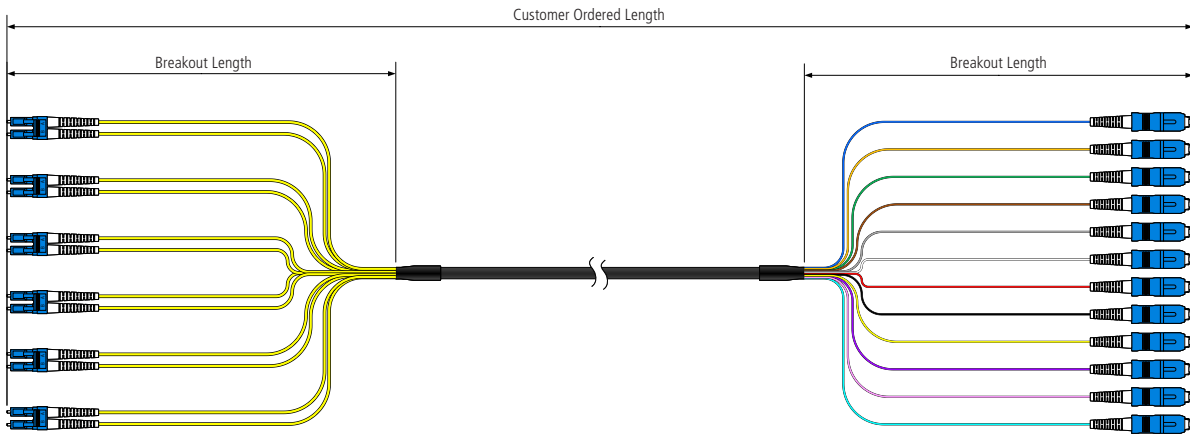
## Pre-Terminated Premise Cable Assemblies

### Specifications

#### Assemblies Dimensions

##### 2F - 12F

The customer ordered length is measured between the connectors ferrules on each end. Breakout length is measured from the breakout point to the connector ferrule.



##### 16F - 24F

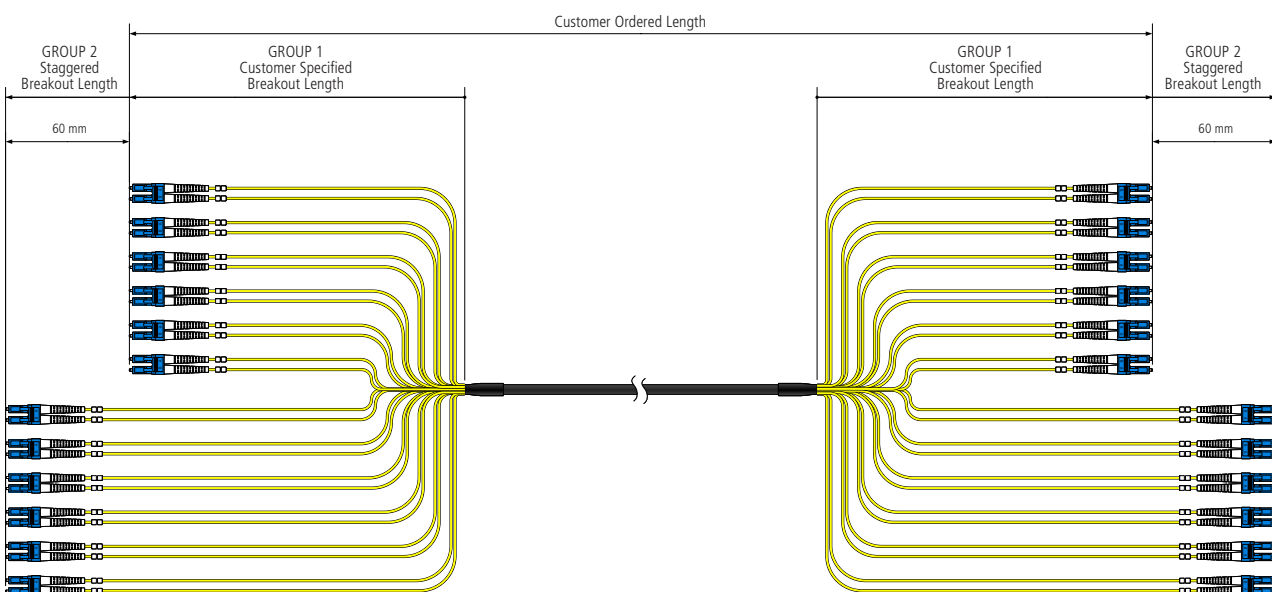
For cable assemblies greater than 12F with no installation aid requirement, the customer ordered length follows the same rules as the 2F-12F assembly dimensions.

For cable assemblies greater than 12F with an installation aid requirement, the connectors are staggered in two groups.

**GROUP 1:** The customer ordered length (as detailed in the assembly part number) is measured between the ferrules of the first connector groups.

**GROUP 2:** The second group of connectors extends the assembly length by 60 mm per end that an installation aid is required.

Breakout length is measured from the breakout point to the first group connector ferrules.



## Pre-Terminated Premise Cable Assemblies



### Options

#### Installation Aids

Tight Buffered cable assemblies can be configured with a pulling mesh. This mesh provides an extra layer of protection over the standard bubble wrap and allows for light duty hauling by leveraging the aramid yarn within the cable.

Micro Cable assemblies can be configured with a protective mesh. This mesh provides an extra layer of protection over the standard bubble wrap and is not for hauling purposes.

#### Cable Glands

Tight Buffered cable assemblies can be configured with cable glands for retention in the fibre management system, with M20 being standard for all fibre counts.

Micro Cable assemblies are not suitable for cable glands.

### Ordering Information

**PT O 1 9 E E LD LD 33E99011 3 K 100**

**Product Type:**  
PT = Pre-Terminated Cable Assemblies

**Cable Type:**  
O = Indoor/Outdoor Tight Buffered, 900µm, LSZH  
T = Tactical Tight Buffered, 900µm  
S = Single Element Micro Cable, 3mm, LSZH  
R = Ruggedised Micro Cable, 4.8/4.5mm LSZH

**Fibre Type\*:**  
1 = SM, G657.A1  
3 = OM3, Bend Tolerant  
4 = OM4, Bend Tolerant  
6 = OM1

**Cable Jacket Colour:**  
1 = Blue  
2 = Orange  
3 = Green  
4 = Brown  
5 = Grey  
6 = White  
7 = Red  
8 = Black  
9 = Yellow  
A = Violet  
B = Pink  
C = Aqua

**Internal Use**  
End A End B  
**Connector End A & B\*:**  
LD = LC/UPC Duplex  
LC = LC/UPC Simplex  
LA = LC/APC Duplex  
LS = LC/APC Simplex  
LB = LC/UPC Uniboot\*  
SC = SC/UPC Simplex  
SA = SC/APC Simplex  
ST = ST/UPC Simplex  
FC = FC/UPC Simplex  
FA = FC/APC Simplex  
XX = Blunt (Pigtail)

**Internal Use**  
**Shipping Reel\*:**  
0 = Not Required  
3 = Small Plastic Reel  
4 = Medium Plastic Reel  
5 = Large Plastic Reel

**Length:**  
2 = 2 Metres  
2.5 = 2.5 Metres  
100 = 100 Metres

#### Assembly Fibre Count

A = 2F  
B = 4F  
C = 6F  
D = 8F  
E = 12F  
F = 16F  
G = 24F

3		3		E		9		9		0		1		0	
BREAKOUT LENGTH END A	BREAKOUT LENGTH END B	OVERSLEEVING END A & B		OVERSLEEVING COLOUR END A		OVERSLEEVING COLOUR END B		STAGGERING*		INSTALLATIONS AID*		GLAND OPTIONS			
0	N/A	0	N/A	0	End A: No Oversleeving (900µm) End B: No Oversleeving (900µm) Tight Buffered Cables Only	0	Not Applicable (900µm Fibres or Blunt Only)	0	Not Applicable (900µm Fibres or Blunt Only)	0	Not Required	0	Not Required	0	Not Required
1	300mm	1	300mm	E	End A: 2mm End B: 2mm All Cables	2	Orange	2	Orange		1	End A: Pulling Mesh End B: Not Required	1	End A: M20 Spiral End B: Not Required	
2	400mm	2	400mm	G	End A: 2mm End B: Not Applicable (Blunt) All Cables - Pigtails	9	Yellow	9	Yellow		2	End A: Not Required End B: Pulling Mesh	3	End A: M20 Spiral End B: M20 Spiral	
3	500mm	3	500mm	M	End A: Not Applicable (Blunt) End B: 2mm All Cables - Pigtails	C	Aqua	C	Aqua		3	End A: Pulling Mesh End B: Pulling Mesh			
4	600mm	4	600mm								4	End A: Protective Mesh End B: Not Required			
5	700mm	5	700mm								5	End A: Not Required End B: Protective Mesh			
6	800mm	6	800mm								6	End A: Protective Mesh End B: Protective Mesh			
7	900mm	7	900mm												
8	1000mm	8	1000mm												
9	2000mm	9	2000mm												

\* Refer to cable datasheet for more information.

† If a shipping reel is required, Connector End A will be on the outside (exposed) end of the reel. Connector End B will be on the inside of the reel.

^ Micro Cable assemblies only.

& Pulling Mesh installation aid available on Tight Buffered Cables only.

Protective Mesh installation aid available on Micro Cable assemblies only.

% Where an installation aid is specified on 16F and 24F cable assemblies, the connectors are staggered in two groups, 60mm apart.

# Sidewinder deployable cable reels available for Tactical Cable assemblies.

To see AFL's MTP Cable Assembly solution, refer to our MTP Cable Assemblies datasheet.