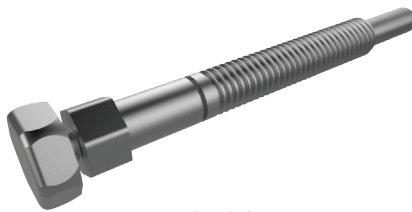




D12449-1



D12449-2

Replacement Breakaway Bolts

AFL recommends replacing the bolts of any wedge connector that is to be re-used. Reference the tables below for more details regarding ordering information, standard pack and bolt sizes.

Dimensions

AFL NO.	STANDARD PACK	THREAD SIZE	BREAKAWAY HEAD SIZE	SECONDARY HEAD SIZE
D12449-1PK	25	3/8-16	5/8"	9/16"
D12449-2PK	10	7/16-14	3/4"	9/16"

Ordering Information

Refer to the Wedge Connector catalog sheets for the prefix number.

FOR AFL NO. PREFIX	ORDER BOLT NO.
WTA	D12449-1PK
WTB	D12449-2PK
WTC	D12449-2PK
WTD	D12449-2PK
SCA	D12449-1PK
SCB	D12449-2PK
PT2B	D12449-2PK
PT4B	D12449-2PK
PT2D	D12449-2PK
PT4D	D12449-2PK

