

Retrofit Cable Management Kit

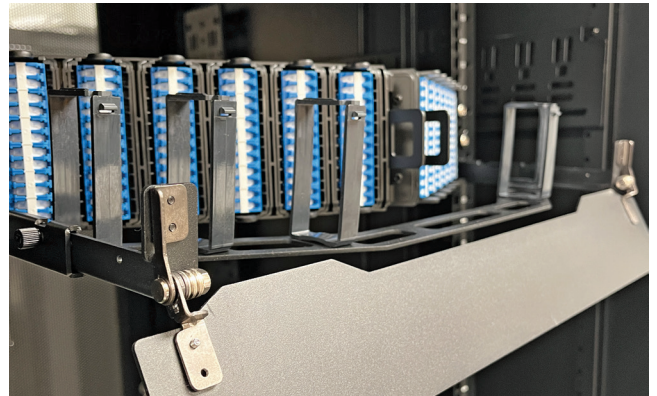
The Retrofit Cable Management Kit solution is a modular cable management system designed to add structured, high density fiber routing to existing flat or V panel rack mount fiber enclosures. Engineered for retrofit applications, these kits enable improved patch cord organization, bend radius protection, and front of panel cable control without replacing installed panels.

Available in multiple rack unit (RU) heights and panel styles, the kits support modern, high fiber count environments and help operators maintain accessibility, airflow, and serviceability as network density increases.



Features

- Retrofit Friendly Design**
 Installs onto existing flat or V panel fiber enclosures, minimizing disruption and eliminating the need for full panel replacement
- Adjustable Depth**
 Base plate and door depth from rack can be adjusted in the field, allowing for application customization
- High Density Cable Management**
 Designed to support today's high fiber counts, including applications using compact and VSFF connectivity
- Multiple Panel Configurations**
 Offered in flat and V panel versions across 1RU, 2RU, and 6RU sizes to match a wide range of deployment needs
- Improved Fiber Protection**
 Provides organized routing paths that help maintain proper bend radius and reduce the risk of fiber damage
- Enhanced Serviceability**
 Keeps patch cords visible, accessible, and neatly managed, simplifying moves, adds, and changes (MACs)



Applications

- Data centers upgrading existing fiber panels for higher port density
- Central offices and headends requiring improved front of rack cable control
- Enterprise and hyperscale environments with frequent re patching
- Retrofit projects where downtime and panel replacement must be minimized

continued
 →

Retrofit Cable Management Kit

Specifications

Category	Value
Type	Flat: 1RU, 2RU V-Panel: 1RU, 2RU, 6RU
Material	CR4 Steel, Nylon 6/6 (UL94 V-0)
Color	Black
Front Depth Range (from rack)	Flat: 80 mm to 110 mm V-Panel: 115 mm to 170 mm
Cable Guide Capacity	288F per 1RU
Qualification	RoHS
Kit Contents (1RU and 2RU)	(1) Tray Manager (1) Door (2) Adjustment/Mounting Arms (4-6) Cable Guide Clips, (1) Adhesive Label
Kit Contents (6RU)	(3) Tray Managers (1) Door (6) Adjustment/Mounting Arms (18) Cable Guide Clips (1) Adhesive Label

Ordering Information

AFL No.	Description
RCM-1RU-FLAT	Retrofit Cable Management Kit, 1RU, Flat Panel
RCM-2RU-FLAT	Retrofit Cable Management Kit, 2RU, Flat Panel
RCM-1RU-VPNL	Retrofit Cable Management Kit, 1RU, V Panel
RCM-2RU-VPNL	Retrofit Cable Management Kit, 2RU, V Panel
RCM-6RU-VPNL	Retrofit Cable Management Kit, 6RU, V Panel