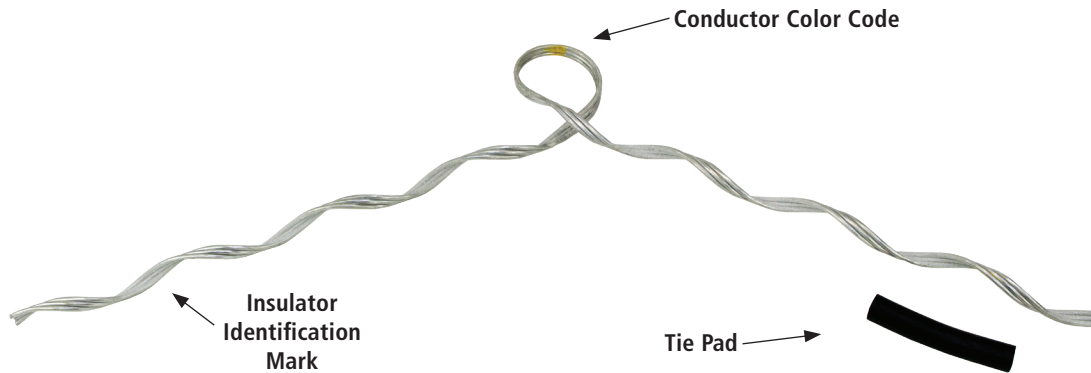


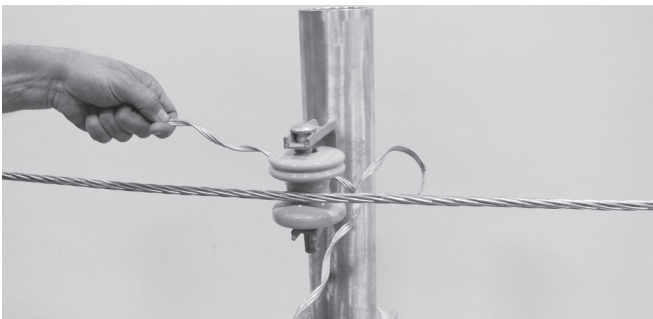
### Spool Tie with Pad

**NOTE: READ AND UNDERSTAND INSTALLATION INSTRUCTIONS BEFORE INSTALL. ENSURE YOU HAVE THE CORRECT HELIFORMED PRODUCT BEFORE INSTALL IS STARTED.**

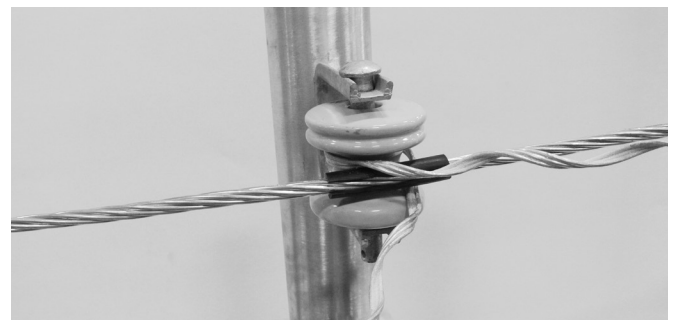
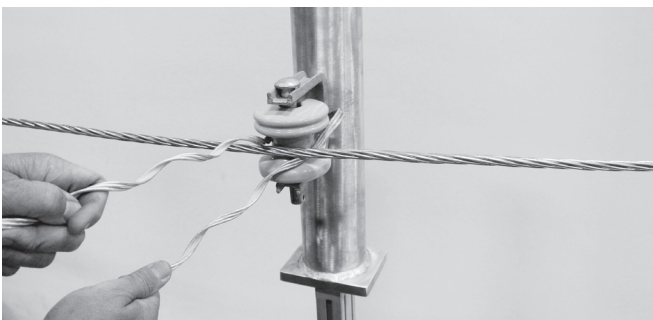


#### Cold Application

1. Install the Spool Tie by feeding one tie leg behind the spool. Then pull the tie leg over the conductor while keeping the right tie leg under the conductor.
3. Apply the Tie Pads to the conductor so the conductor does not come into direct contact with the insulator. Keep the tie pad slit facing outward.



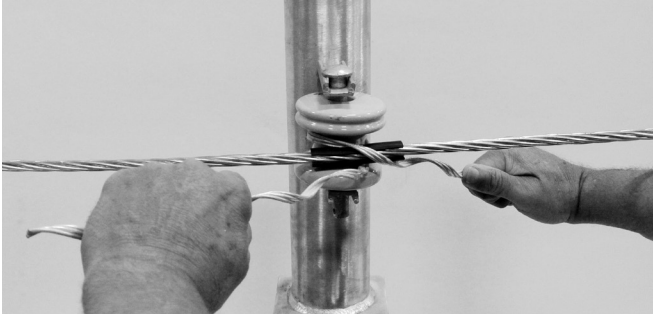
2. Position the Spool Tie around the neck of the insulator. Be sure the conductor is between the two legs of the Spool Tie. (left tie leg above, right tie leg below conductor)
4. Ensure the Tie Pad is protecting the conductor from coming in direct contact with the insulator.



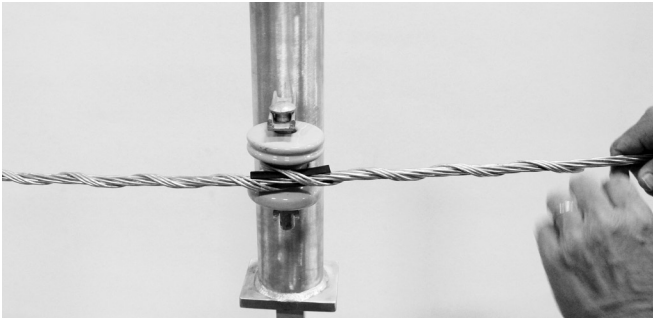
*continued*  
→

### Spool Tie with Pad

5. Pull the two legs opposite ways ensuring a tight connection around the insulator and start to wrap the Tie onto the conductor.



6. Finish fully wrapping both legs around the conductor. Ensure the Spool Tie end fully snaps into place. This may require more pressure than the pressure to wrap.



#### Safety

1. Spool Ties are precision devices. They should be stored in covered cartons and handled carefully.
2. This application procedure is NOT intended to supersede any company construction or safety standards. This procedure is offered only to illustrate safe application for the individual. Failure to follow these procedures and restrictions may result in personal injury.
3. For proper performance and personal safety ensure the proper size Spool Tie has been selected before installation.