

SWITCHBLADE FIBER CONTAINMENT VAULT

Required Tools

Phillips Head Screwdriver and/or Drill Bit – Locking Screws
9/16 Socket – Lid Bolt

Placement Instructions

1. Excavate 1-2 feet wider and longer than the enclosure and 6 inches deeper than the depth of the enclosure.
2. Add 6 inches of crushed rock for drainage.
3. Remove enclosure from the pallet/packaging to prepare for placement (**Figure 1**).
4. To prepare for installation: – **CAUTION: PINCH-POINTS** –
 - a. Cut straps on top of the vault and pull to remove them from the slots to allow the base to open freely.
 - b. With hands and fingers clear of hinges, unfold vault until square (**Figure 2**).
 - c. Lock into position by securing the provided self-tapping screws (#10 x 1.5" Panhead, Phillips) at outside corners (**Figure 3**).
5. Lift the enclosure and place it into the hole.
6. Install rodent barrier, if necessary.
7. Check the enclosure's elevation with a level and make the necessary adjustments.
8. To back fill:
 - a. If high soil compaction is required, internal bracing should be used to prevent deflection.
 - b. Install the lid, securing it in place with the 3/8" lag bolt provided prior to back fill (**Figure 4**).
 - c. Back fill, starting with compaction of the short edges of the vault, followed by the long edges.
9. Installations in fine/silty sand may require sealant in small corner gaps to prevent soil infiltration.

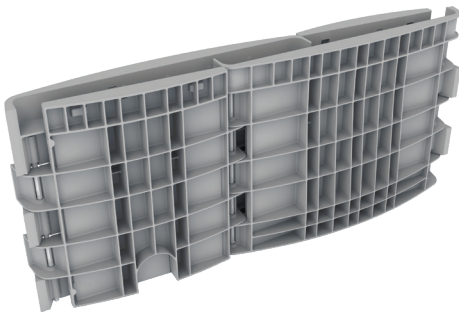


Figure 1

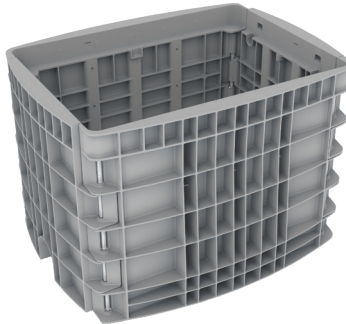


Figure 2

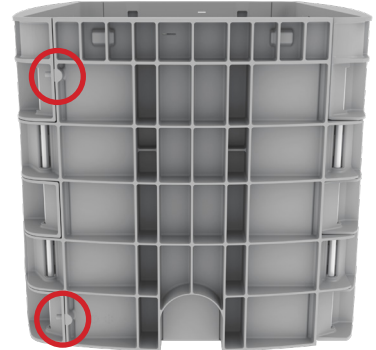


Figure 3



Figure 4