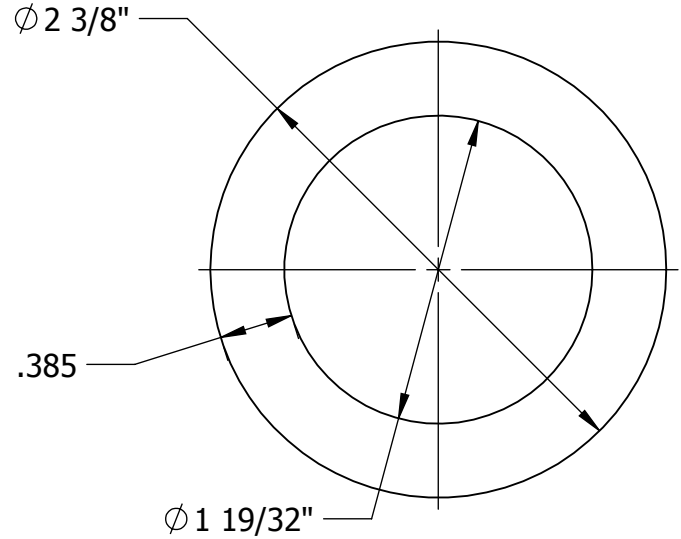
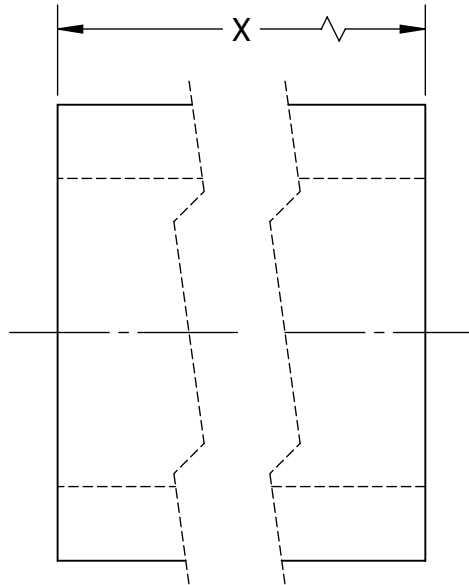


THIS DRAWING AND ALL INFORMATION ON IT IS THE PROPERTY OF AFL. IT IS CONFIDENTIAL AND IT IS GIVEN TO YOU FOR A LIMITED PURPOSE AND MUST BE RETURNED UPON REQUEST. NEITHER THIS DRAWING OR ANY PART OF IT NOR ANY INFORMATION CONCERNING IT MAY BE COPIED, EXHIBITED, OR FURNISHED TO OTHERS NOR PHOTOGRAPHS TAKEN OF ANY ARTICLE FABRICATED OR ASSEMBLED FROM THE DRAWING WITHOUT THE CONSENT OF AFL.

ITEM NO:

DWG. NO:



**MATERIAL:**  
FRP WITH UV INHIBITOR

**MECHANICAL RATINGS:**

**TENSILE**

LW - 30,000 PSI

CW - 10,000 PSI

MODULUS OF ELASTICITY -  $2.8 \times 10^6$  PSI

POISONS RATIO - 0.33

WT: 1.79 LBS/FT

LOCATION	CONTRACT NO	CUST / CONTR
----------	-------------	--------------

REVISIONS					DRN BY:
REV	DESCRIPTION	DATE	BY	APR	HV
					DRN DATE:
					7.24.15
					CHK BY:
					JL
					CHK DATE:
					7.24.15
					PA 2017.270.0

<b>PIPE, INSULATED CORE, FIBERGLASS REINFORCED, 2" IPS, SCH40</b>	
REV 0	PART NO: PFGC200-40
1 OF 1	