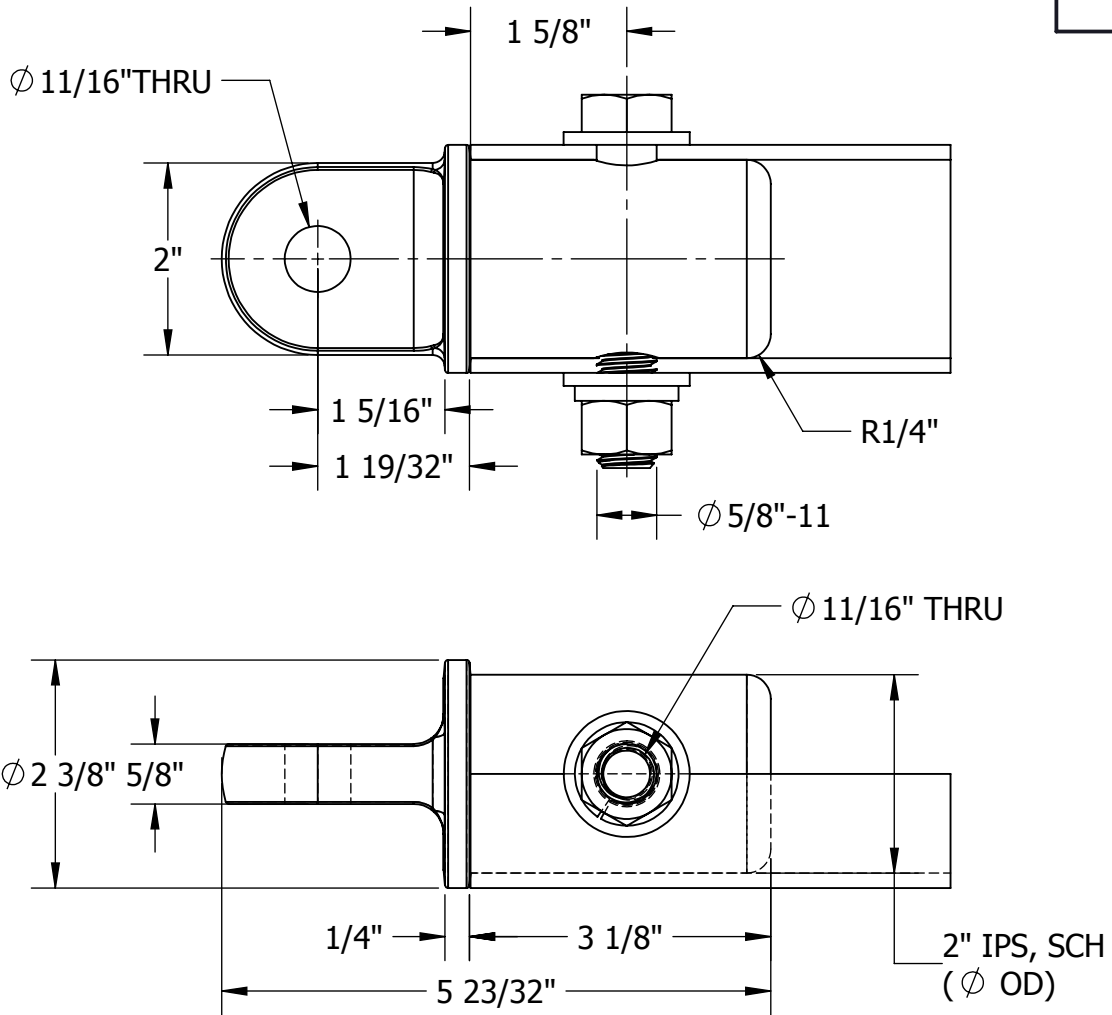


THIS DRAWING AND ALL INFORMATION ON IT IS THE PROPERTY OF AFL. IT IS CONFIDENTIAL AND IT IS GIVEN TO YOU FOR A LIMITED PURPOSE AND MUST BE RETURNED UPON REQUEST. NEITHER THIS DRAWING OR ANY PART OF IT NOR ANY INFORMATION CONCERNING IT MAY BE COPIED, EXHIBITED, OR FURNISHED TO OTHERS NOR PHOTOGRAPHS TAKEN OF ANY ARTICLE FABRICATED OR ASSEMBLED FROM THE DRAWING WITHOUT THE CONSENT OF AFL.

ITEM NO:

DWG. NO:



| ITEM NO. | PART NO. | SCH | DIMENSIONS IN INCHES | | WEIGHT (LBS) |
|----------|-----------------|-----|----------------------|--|--------------|
| | | | OD | | |
| | TPSC200-63-DG01 | 40 | 2.07 | | 3.95 |
| | TPSC200-63-DG02 | 80 | 1.90 | | 3.90 |

MATERIAL:

BODY - DUCTILE IRON ASTM A476-70

BOLTS, NUTS & LOCKWASHERS - STEEL, H.D.G*

| BOLT SIZES | WRENCH/ SOCKET SIZES | TORQUE VALUE (FT-LBS) |
|------------|----------------------|-----------------------|
| 5/8-11 | 15/16 HEX | 110 |

* = HOT DIP GALVANIZED

| REVISIONS | | | | | DRN BY: | CONTRACT NO | | CUST / CONTR | |
|-----------|-------------|------|----|-----|---------------|----------------------|----------|--------------|--|
| REV | DESCRIPTION | DATE | BY | APR | EE | | | | |
| | | | | | DRN DATE: | | | | |
| | | | | | 08.14.14 | | | | |
| | | | | | CHK BY: | | | | |
| | | | | | JL | | | | |
| | | | | | CHK DATE: | | | | |
| | | | | | 08.14.14 | | | | |
| | | | | | PA 2017.270.0 | REV | PART NO: | | |
| | | | | | 0 | TPSC200-63-DG SERIES | | 1 OF 1 | |



END FITTING, PIPE EYE, 2" IPS, INTERNAL, HDG