



230 kV Aluminum Bolted Bus Supports

DOSSERT®

TYPE CBP-AA

Two Unit Bus Support For Cable

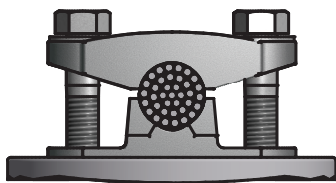
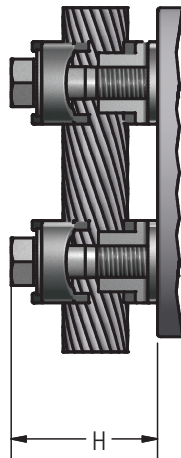
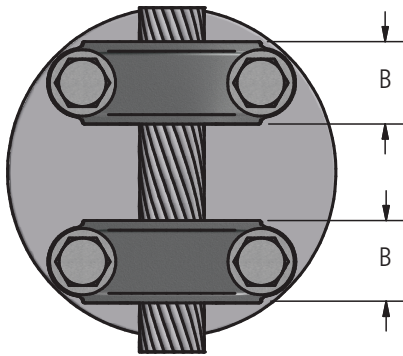
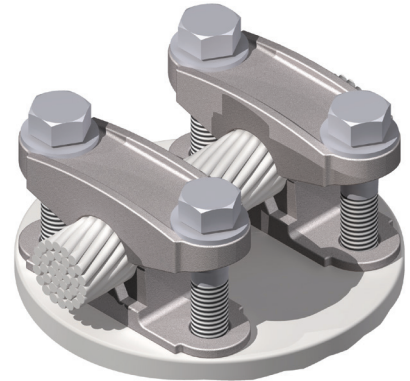
A two unit, four piece cable support which mounts conductor to cap of insulator. A single unit for light service can be supplied on request. Clamp is furnished with cap screws for threading into tapped holes of insulator.

Material

Aluminum Alloy

Hardware

Galvanized steel bolts and lockwashers.



Ordering Information

CATALOG NUMBER	AAC CABLE RANGE		BOLT CIRCLE	DIMENSIONS IN INCHES		
	MIN	MAX		B	H	BOLT SIZE
CBP21-3-AA	2 Stranded	4/0 Stranded	3	1 1/8	1 9/16	1/2
CBP21-5-AA	2 Stranded	4/0 Stranded	5	1 3/8	1 13/16	5/8
CBP50-3-AA	2/0 Stranded	500 kcmil	3	1 1/8	1 13/16	1/2
CBP50-5-AA	2/0 Stranded	500 kcmil	5	1 3/8	2 9/32	5/8
CBP125-3-AA	550 kcmil	1250 kcmil	3	1 3/8	2 3/16	1/2
CBP125-5-AA	550 kcmil	1250 kcmil	5	1 5/8	2 3/4	5/8