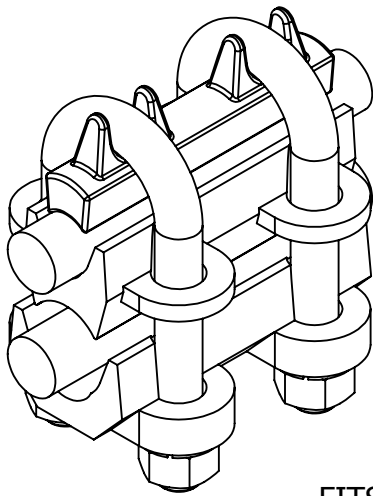


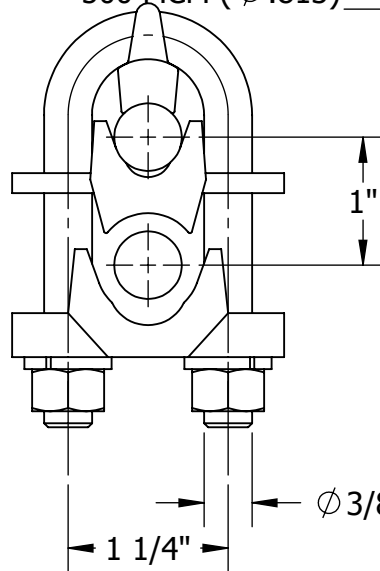
THIS DRAWING AND ALL INFORMATION ON IT IS THE PROPERTY OF AFL. IT IS CONFIDENTIAL AND IT IS GIVEN TO YOU FOR A LIMITED PURPOSE AND MUST BE RETURNED UPON REQUEST. NEITHER THIS DRAWING OR ANY PART OF IT NOR ANY INFORMATION CONCERNING IT MAY BE COPIED, EXHIBITED, OR FURNISHED TO OTHERS NOR PHOTOGRAPHS TAKEN OF ANY ARTICLE FABRICATED OR ASSEMBLED FROM THE DRAWING WITHOUT THE CONSENT OF AFL.

ITEM NO:

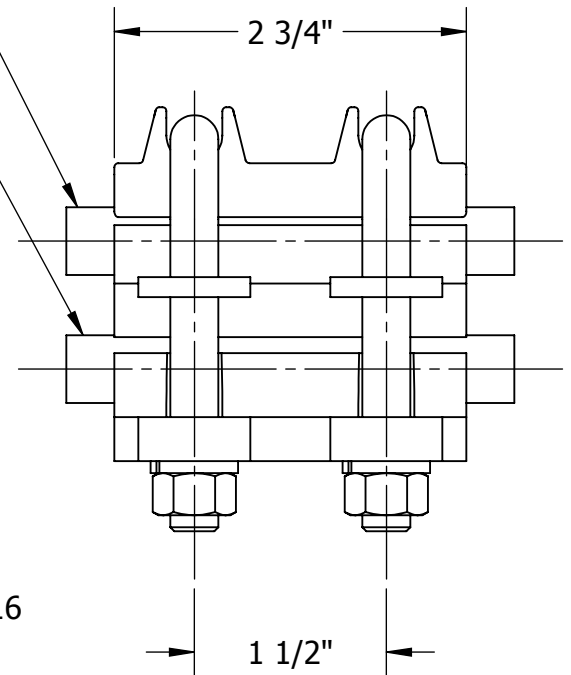
DWG. NO:



FITS 300 MCM (ϕ .630)
- 500 MCM (ϕ .813)



FITS # 1 STR (ϕ .332)
- 4/0 STR (ϕ .528)



MATERIAL:

BODY - ALUMINUM BRONZE ASTM B30

U-BOLTS, NUTS & LOCKWASHERS - SILICON BRONZE

MECHANICAL RATING

SINGLE CLAMP SLIP: 2,600 LBS

DOUBLE CLAMP SLIP: 7,800 LBS


BOLT SIZES	WRENCH/ SOCKET SIZES	TORQUE VALUES (FT-LBS)
3/8-16	9/16 HEX	*

* TORQUE PER THE FOLLOWING:

20 IN-LBS INCREMENTS PER NUT, EACH U-BOLT AT A TIME UNTIL A MAXIMUM TORQUE VALUE OF 240 IN-LBS AS SET FORTH IN NEMA STANDARDS PUBLICATION CC1. THE NEXT TO FINAL AND FINAL TIGHTENING INCREMENTS FOR EACH U-BOLT HOLD TO 5 LBS-IN.

WT: 1.67 LB

* = HOT DIP GALVANIZED

THIS DRAWING ASSY	LOCATION					CONTRACT NO		CUST / CONTR	
	REVISIONS					DRN BY: DK DRN DATE: 2.26.14 CHK BY: JL CHK DATE: 2.26.14 PA 2013.0			
	REV	DESCRIPTION	DATE	BY	APR		CLAMP, PARALLEL, 2 U-BOLT, 300-500MCM & TAP #1 STR - 4/0 STR, BRZ		
	1	ADDED WEIGHT	2.28.14	DK	JL				