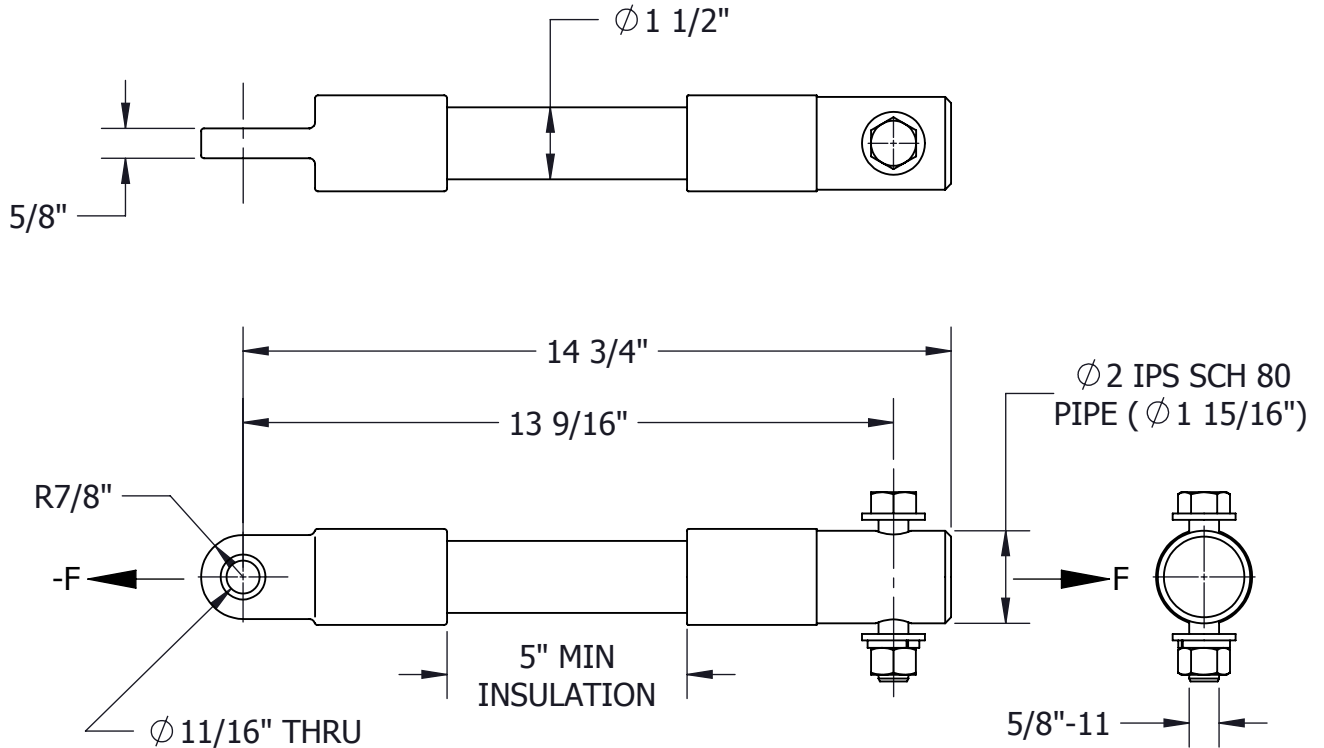


THIS DRAWING AND ALL INFORMATION ON IT IS THE PROPERTY OF AFL. IT IS CONFIDENTIAL AND IT IS GIVEN TO YOU FOR A LIMITED PURPOSE AND MUST BE RETURNED UPON REQUEST. NEITHER THIS DRAWING OR ANY PART OF IT NOR ANY INFORMATION CONCERNING IT MAY BE COPIED, EXHIBITED, OR FURNISHED TO OTHERS NOR PHOTOGRAPHS TAKEN OF ANY ARTICLE FABRICATED OR ASSEMBLED FROM THE DRAWING WITHOUT THE CONSENT OF AFL.

ITEM NO:

DWG. NO:



**MATERIAL:**

ENDS - ALUMINUM ALLOY, ASTM B221  
 INSULATOR ROD - 1 1/2" EPOXY - FIBERGLASS  
 BOLT, NUT & LOCKWASHER - STEEL, H.D.G\*

**MECHANICAL RATINGS:**

MIN. ULTIMATE LOAD (F): 20,000 LBS

**ELECTRICAL RATINGS:**

LEAKAGE DISTANCE: 5 IN  
 DRY FLASHOVER: 60 kV  
 WET FLASHOVER: 31 kV  
 OPERATING VOLTAGE: 750 VDC


BOLT SIZES	WRENCH/ SOCKET SIZES	TORQUE VALUES (FT-LBS)
5/8-11	15/16 HEX	60

WT: 2.72 LB

\* = HOT DIP GALVANIZED

LOCATION	CONTRACT NO	CUST / CONTR
----------	-------------	--------------

REVISIONS					DRN BY:
REV	DESCRIPTION	DATE	BY	APR	JL
					DRN DATE:
					6.7.13
					CHK BY:
					JL
					CHK DATE:
					6.7.13
					PA 2017.359.0



**INSULATOR, STRUT, 2" IPS, SCH 80, INTERNAL FITTING, 750 VDC, AL**

REV	PART NO:	INS-ST2-A05	1 OF 1
0			