

DOSSERT®

TYPE HSS

Low Mount Horizontal Bus Support

A low mount horizontal bus support for mounting flat bar to the cap or base of an insulator. For cap mounting cap screws are furnished and for base mounting bolts and nuts are furnished. Unless otherwise specified, clamps are supplied for cap mounting.

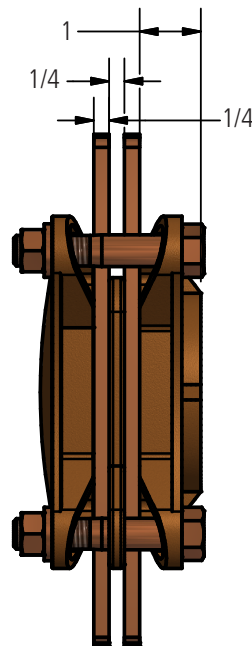
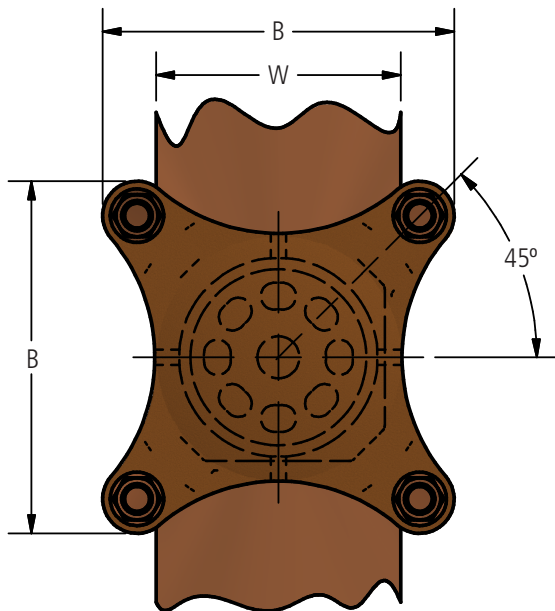
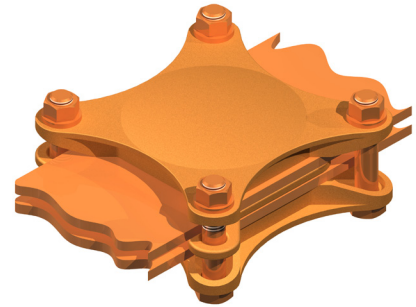
Material

Copper Alloy

Hardware

Everdur bolts, nuts and lockwashers

Mounting hardware galvanized steel



Ordering Information

CATALOG NUMBER	DIMENSIONS IN INCHES			BOLT SIZE
	WIDTH IN BARS (W)	BOLT CIRCLE	B	
HSS2-3	2	3	3-5/16	3/8
HSS2-5	2	5	3-5/16	3/8
HSS3-3	3	3	4-5/16	3/8
HSS3-5	3	5	4-5/16	3/8
HSS4-3	4	3	5-3/4	1/2
HSS4-5	4	5	5-3/4	1/2
HSS5-3	5	3	7-1/8	5/8
HSS5-5	5	5	7-1/8	5/8
HSS6-3	6	3	8-1/8	5/8
HSS6-5	6	5	8-1/8	5/8

DOSSERT® TYPE HSSB, HSSC Pedestal Bus Support For Multiple Flat Bar

Type HSSB provides for bolt circle mounting on a 3 inch or 5 inch bolt circle. Type HSSC is a center mounting clamp for horizontal supporting of flat bus. Cap screws are furnished for cap mounting and bolts and nuts are furnished for base mounting. Unless otherwise specified clamps are supplied for cap mounting.

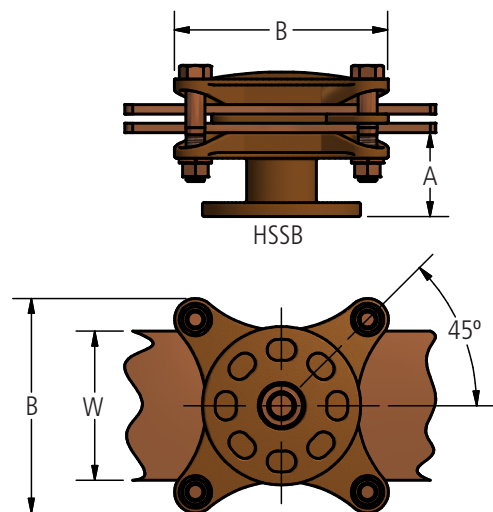
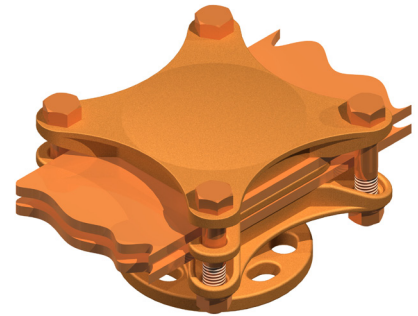
Material

Copper Alloy

Hardware

Everdur bolts, nuts and lockwashers

Mounting hardware galvanized steel



Ordering Information

CATALOG NUMBER		BOLT CIRCLE	DIMENSIONS IN INCHES				
HSSB	HSSC		A	B	W	CENTER BOLT	BOLT SIZE
HSSB2-3	HSSC2-3	3	2 1/4	3 5/16	2	3/4	3/8
HSSB2-5	HSSC2-5	5	2	3 5/16	2	3/4	3/8
HSSB3-3	HSSC3-3	3	2 1/4	4 5/16	3	3/4	3/8
HSSB3-5	HSSC3-5	5	2	4 5/16	3	3/4	3/8
HSSB4-3	HSSC4-3	3	2 1/4	5 3/4	4	3/4	1/2
HSSB4-5	HSSC4-5	5	2	5 3/4	4	3/4	1/2
HSSB5-3	HSSC5-3	3	2 1/4	7 1/8	5	3/4	5/8
HSSB5-5	HSSC5-5	5	2	7 1/8	5	3/4	5/8
HSSB6-3	HSSC6-3	3	2 1/4	8 1/8	6	3/4	5/8
HSSB6-5	HSSC6-5	5	2	8 1/8	6	3/4	5/8
HSSC-2	HSSC-2	3	2 1/4	3 5/16	2	3/4	3/8
HSSC-3	HSSC-3	3	2 1/4	4 5/16	3	3/4	3/8
HSSC-4	HSSC-4	3	2 1/4	5 3/4	4	3/4	1/2
HSSC-5	HSSC-5	3	2 1/4	7 1/8	5	3/4	5/8
HSSC-6	HSSC-6	3	2 1/4	8 1/8	6	3/4	5/8

DOSSERT® TYPE SAH, SAHD, SHH, SHHD

A horizontal bus support for supporting one or more flat bus bars in a horizontal position. The following supports do not include spacers. The double group type includes a single wide spacer only.

Material

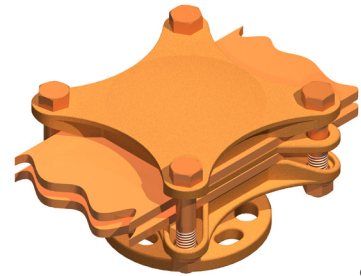
Copper Alloy

Hardware

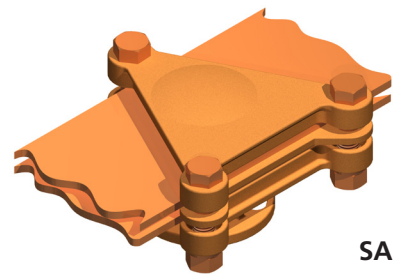
Everdur bolts, nuts and lockwashers
Mounting hardware galvanized steel

Note

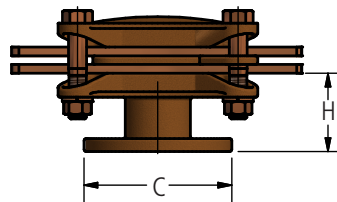
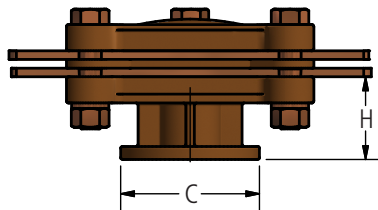
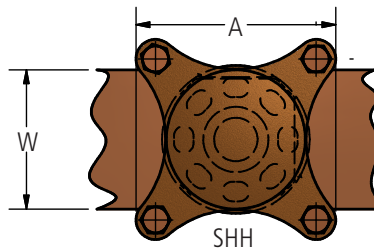
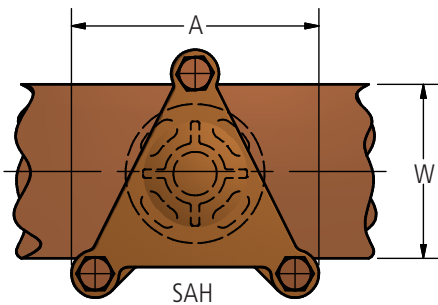
Add suffix to catalog number for the number of bars to be supported. EX: SAV4-3-4



SHH



SAH



Ordering Information

CATALOG NUMBER				WIDTH OF BARS	BOLT CIRCLE	DIMENSIONS IN INCHES			
SAH	SAHD	SHH	SHHD			A	C	H	W
SAH2-3	SAHD2-3	SHH2-3	SHHD2-3	2	3	3 5/16	3 5/16	2 1/8	2
SAH2-5	SAHD2-5	SHH2-5	SHHD2-5	2	5	3 5/16	3 5/16	2 3/8	2
SAH3-3	SAHD3-3	SHH3-3	SHHD3-3	3	3	3 5/16	4 5/16	2 1/8	3
SAH3-5	SAHD3-5	SHH3-5	SHHD3-5	3	5	3 5/16	4 5/16	2 3/8	3
SAH4-3	SAHD4-3	SHH4-3	SHHD4-3	4	3	4 3/4	5 3/4	2 1/4	4
SAH4-5	SAHD4-5	SHH4-5	SHHD4-5	4	5	4 3/4	5 3/4	2 1/2	4
SAH5-3	SAHD5-3	SHH5-3	SHHD5-3	5	3	5 3/4	6 3/4	2 3/8	5
SAH5-5	SAHD5-5	SHH5-5	SHHD5-5	5	5	5 3/4	6 3/4	2 5/8	5
SAH6-3	SAHD6-3	SHH6-3	SHHD6-3	6	3	7 1/8	8 1/8	2 3/8	6
SAH6-5	SAHD6-5	SHH6-5	SHHD6-5	6	5	7 1/8	8 1/8	2 5/8	6

DOSSERT® TYPE SAV, SAVD, SHV, SHVD

Vertical Bus Support Clamps

A vertical support clamp for supporting one or more flat bus bars in a vertical or upright position. SAV and SHV does not include a spacer, SAVD and SHVD includes a single wide spacer only.

Material

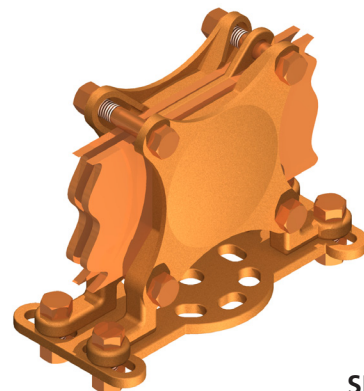
Copper Alloy

Note

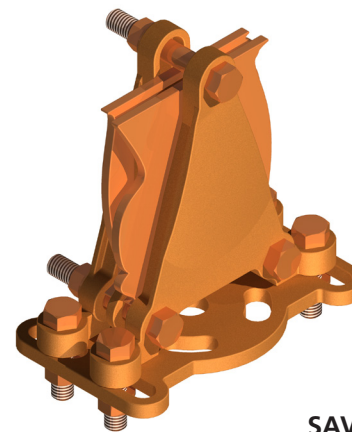
Suffix to the catalog number the number of bars to be supported. EX: SAV4-5-4

Hardware

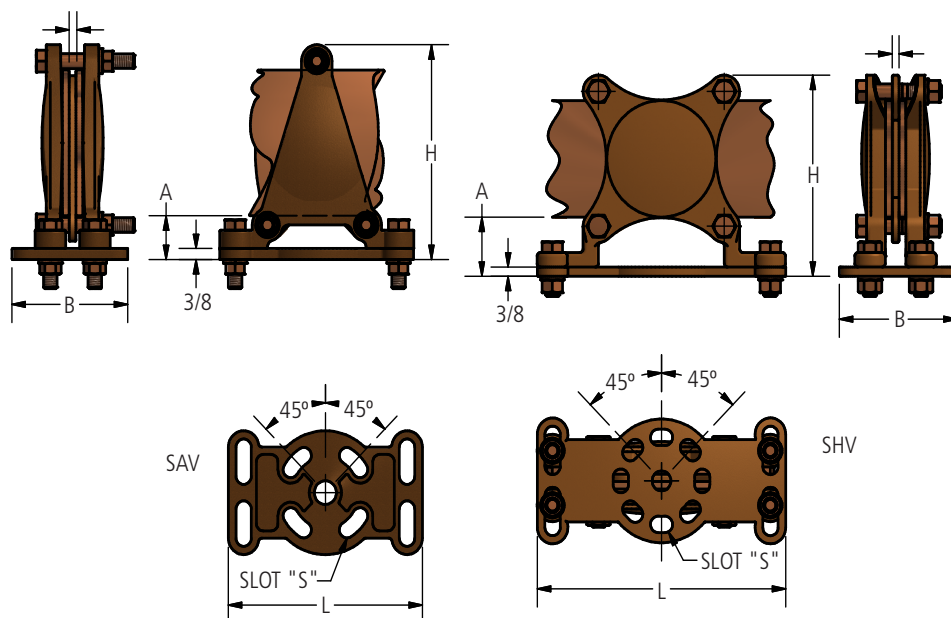
Everdur bolts, nuts and lockwashers
Mounting hardware galvanized steel



SHV



SAV



Ordering Information

CATALOG NUMBER		A	CATALOG NUMBER		A	DIMENSIONS IN INCHES				
SAV	SAVD		SHV	SHVD		WIDTH OF BARS	BOLT CIRCLE	B	H	L
SAV2-3	SAVD2-3	1-3/4	SHV2-3	SHVD2-3	1-3/4	2	3	4-1/4	4-7/16	8-1/8
SAV2-5	SAVD2-5	1-3/4	SHV2-5	SHVD2-5	1-3/4	2	5	4-1/4	4-7/16	8-1/8
SAV3-3	SAVD3-3	1-3/4	SHV3-3	SHVD3-3	1-3/4	3	3	4-1/4	5-7/16	8-1/8
SAV3-5	SAVD3-5	1-3/4	SHV3-5	SHVD3-5	1-3/4	3	5	4-1/4	5-7/16	8-1/8
SAV4-3	SAVD4-3	1-3/4	SHV4-3	SHVD4-3	1-3/4	4	3	4-1/4	6-3/4	8-1/8
SAV4-5	SAVD4-5	1-3/4	SHV4-5	SHVD4-5	1-3/4	4	5	4-1/4	6-3/4	7-1/8
SAV5-3	SAVD5-3	1-3/4	SHV5-3	SHVD5-3	1-3/4	5	3	4-1/4	7-3/4	7-1/8
SAV5-5	SAVD5-5	1-3/4	SHV5-5	SHVD5-5	1-3/4	5	5	4-1/4	7-3/4	7-1/8
SAV6-3	SAVD6-3	1-3/4	SHV6-3	SHVD6-3	2	6	3	4-1/4	8-15/16	7-1/8
SAV6-5	SAVD6-5	1-3/4	SHV6-5	SHVD6-5	2	6	5	4-1/4	8-15/16	7-1/8

DOSSERT® TYPE SAVS, SHVS

Sliding Vertical Bus Support For Multiple Flat Bars

Four types of sliding bus support clamps for supporting one or more flat bars in a vertical or upright position. The slotted base provides for 1 1/4 inch of axial traverse. Accommodates any number of bars. Types SAVSD and SHVSD allows for double stack mounting by the provision of a 2 3/8 inch spacer for single or multi-bar systems. Unless otherwise specified types SAVS and SHVS are supplied without spacers and types SAVSD and SHVSD are supplied with only the 2 3/8 inch double stack spacer. Supplied with cap screws for cap mounting or bolts and nuts for base mounting.

Material

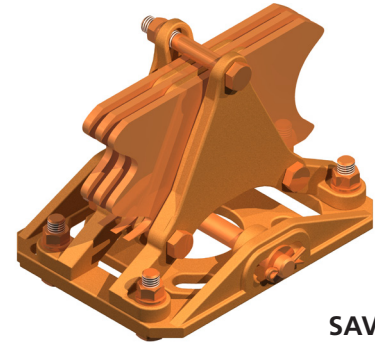
Copper Alloy

Hardware

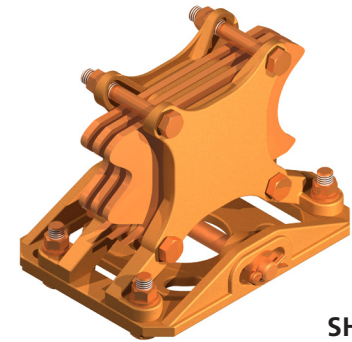
Everdur bolts, nuts, lockwashers, flat washers, and stainless steel cotter pin
Mounting hardware galvanized steel

Note

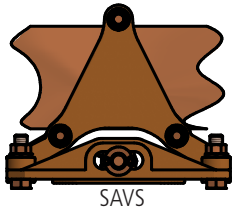
- For additional spacers for 1/4 inch bars spaced 1/4 inch apart please contact AFL
- When ordering add the number of bars to be supported to the end of the catalog number and state bar thickness if other than 1/4 inch. Example: SAVS3-3-4



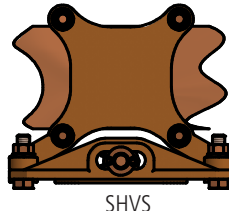
SAVS



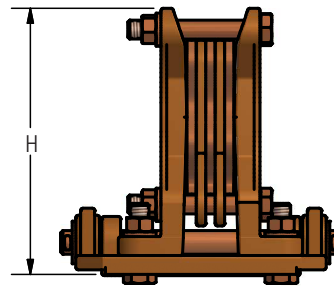
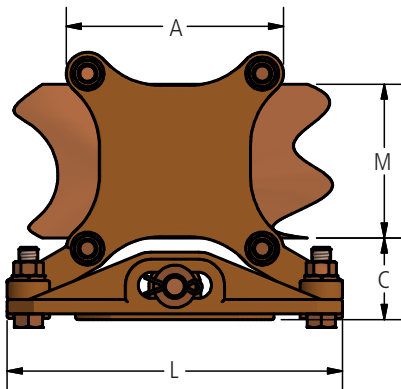
SHVS



SAVS



SHVS



Ordering Information

CATALOG NUMBER		WIDTH OF BARS M	BOLT CIRCLE	DIMENSIONS IN INCHES				BOLT SIZE
SAVS	SHVS			A	C	H	L	
SAVS3-3	SHVS3-3	3	3	4 5/16	1 3/8	5 3/8	7 3/8	3/8
SAVS3-5	SHVS3-5	3	5	4 5/16	1 1/2	5 1/2	9 3/8	3/8
SAVS4-3	SHVS4-3	4	3	4 3/4	1 7/8	6 3/4	7 7/8	1/2
SAVS4-5	SHVS4-5	4	5	5 3/4	2	6 7/8	9 5/16	1/2
SAVS5-3	SHVS5-3	5	3	4 3/4	1 7/8	7 3/4	7 7/8	1/2
SAVS5-5	SHVS5-5	5	5	5 3/4	2	7 7/8	9 5/16	1/2
SAVS6-3	SHVS6-3	6	3	4 3/4	1 7/8	8 3/4	7 7/8	1/2
SAVS6-5	SHVS6-5	6	5	5 3/4	2	8 7/8	9 5/16	1/2

DOSSERT® TYPE SSHH, SSHHD Horizontal Sliding Bus Support

A horizontal type sliding bus support clamp for supporting one or more flat bars. The axle type support with slotted bracket provides for a 1 1/4 inch traverse. Accommodates any number of bars. Type SSHHD allows for double stack mounting by the provision of a 2 3/8 inch spacer for single bar or multi-bar systems. Unless otherwise specified type SSHH is supplied without spacers and type SSHHD is supplied with only the 2 3/8 inch double stack spacer. Supplied with cap screws for cap mounting or bolts and nuts for base mounting.

Material

Copper Alloy

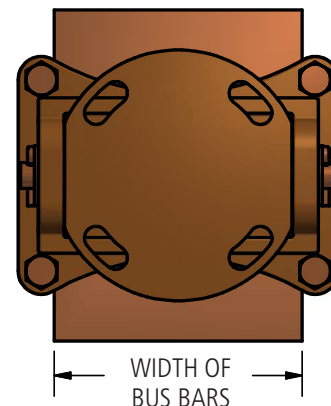
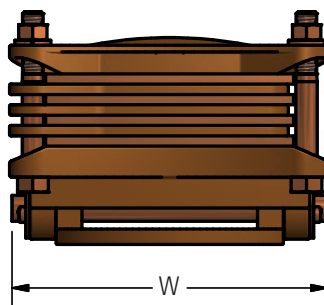
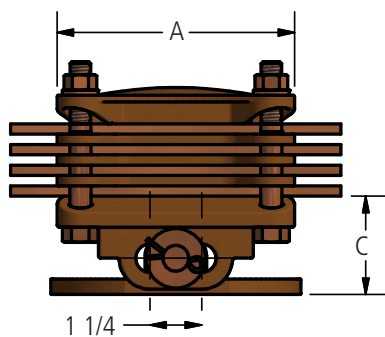
Hardware

Everdur bolts, nuts, lockwashers, flat washers, and stainless steel cotter pin

Mounting hardware galvanized steel

Note

- When ordering suffix the number of bars to be supported to catalog number and state bar thickness if other than 1/4 inch.
- For additional spacers for 1/4 inch bars spaced 1/4 inch apart please contact Dossert.



Ordering Information

CATALOG NUMBER		WIDTH OF BUS BARS	BOLT CIRCLE	DIMENSIONS IN INCHES			BOLT SIZE
				A	C	W	
SSHH2-3	SSHH2-3	2	3	4 5/16	2 1/8	6 3/4	3/8
SSHH2-5	SSHH2-5	2	5	4 5/16	2 1/4	6 3/4	3/8
SSHH3-3	SSHH3-3	3	3	4 5/16	2 1/8	6 3/4	3/8
SSHH3-5	SSHH3-5	3	5	4 5/16	2 1/4	6 3/4	3/8
SSHH4-3	SSHH4-3	4	3	4 3/4	2 1/4	7 1/4	1/2
SSHH4-5	SSHH4-5	4	5	4 3/4	2 1/2	7 1/4	1/2
SSHH5-3	SSHH5-3	5	3	5 3/4	2 3/8	7 3/8	1/2
SSHH5-5	SSHH5-5	5	5	5 3/4	2 5/8	7 3/8	1/2
SSHH6-3	SSHH6-3	6	3	5 3/4	2 3/8	7 3/4	1/2
SSHH6-5	SSHH6-5	6	5	5 3/4	2 5/8	7 3/4	1/2