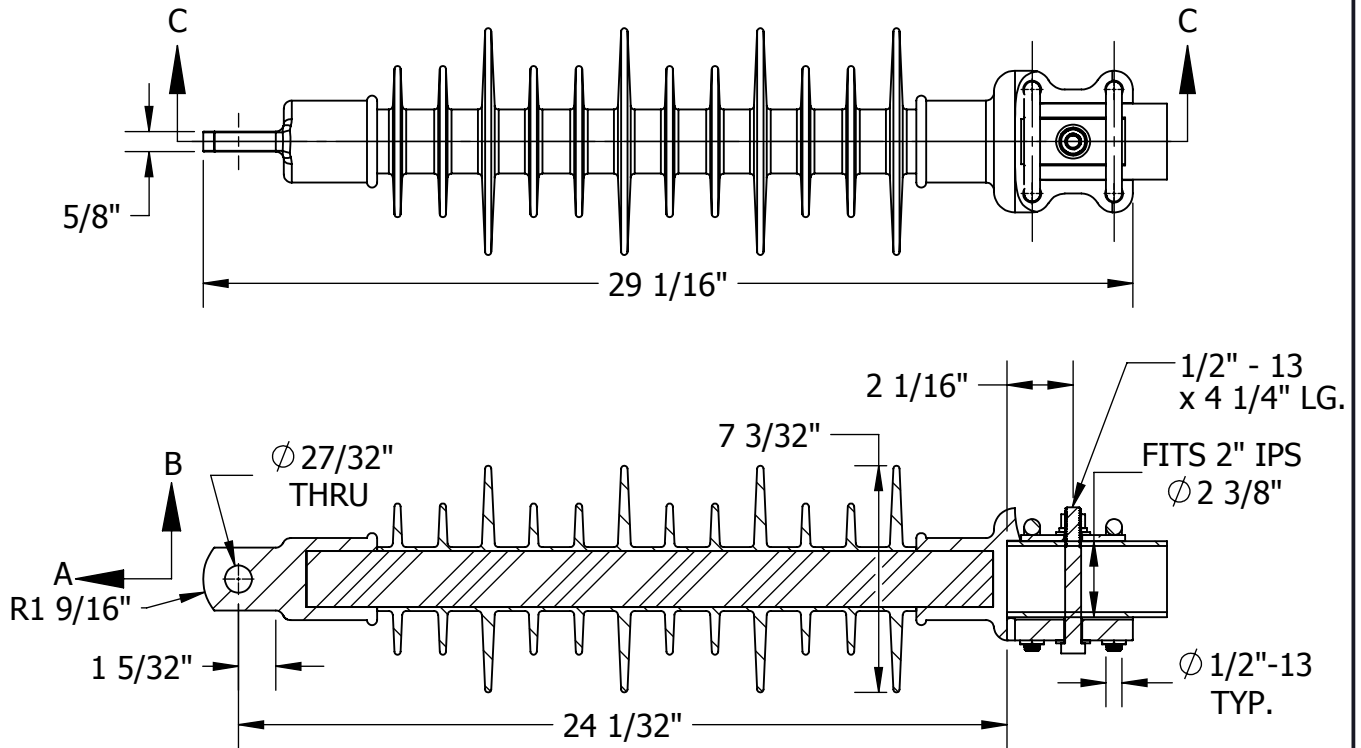


THIS DRAWING AND ALL INFORMATION ON IT IS THE PROPERTY OF AFL. IT IS CONFIDENTIAL AND IT IS GIVEN TO YOU FOR A LIMITED PURPOSE AND MUST BE RETURNED UPON REQUEST. NEITHER THIS DRAWING OR ANY PART OF IT NOR ANY INFORMATION CONCERNING IT MAY BE COPIED, EXHIBITED, OR FURNISHED TO OTHERS NOR PHOTOGRAPHS TAKEN OF ANY ARTICLE FABRICATED OR ASSEMBLED FROM THE DRAWING WITHOUT THE CONSENT OF AFL.

ITEM NO:

DWG. NO:



**MATERIAL:**

INSULATOR ENDS - DUCTILE IRON, H.D.G.\*

INSULATOR ROD - 3 1/2" EPOXY - FIBERGLASS

SKIRTS - EPDM RUBBER

U-BOLTS, BOLT, NUTS & LOCKWASHERS - STAINLESS STEEL

**MECHANICAL RATINGS:**

MIN. ULTIMATE STRENGTH:

A = 20,230 LBS

B = 1,240 LBS-FT

**ELECTRICAL RATINGS:**

LEAKAGE DISTANCE: 53.6 IN

DRY ARCING DISTANCE: 19.4 IN

DRY LIGHTNING IMPULSE W/S: 325 kV

WET POWER FREQUENCY W/S 10 SEC: 175 kV

DRY POWER FREQUENCY W/S 60 SEC: 215 kV

BOLT SIZES	WRENCH/ SOCKET SIZES	TORQUE VALUES (FT-LBS)
1/2-13	3/4 HEX	43

WT: 17.00 LB

\* = HOT DIP GALVANIZED

LOCATION	CONTRACT NO	CUST / CONTR
----------	-------------	--------------

REVISIONS					DRN BY:
REV	DESCRIPTION	DATE	BY	APR	CB

<p>INSULATOR, STRUT, TONGUE, 2" IPS, 25kV</p>	
REV	PART NO:
0	SA-B0406-04
1 OF 1	

DRN DATE: 12.19.16  
CHK BY: GC  
CHK DATE: 12.19.16  
PA 2015.231.0