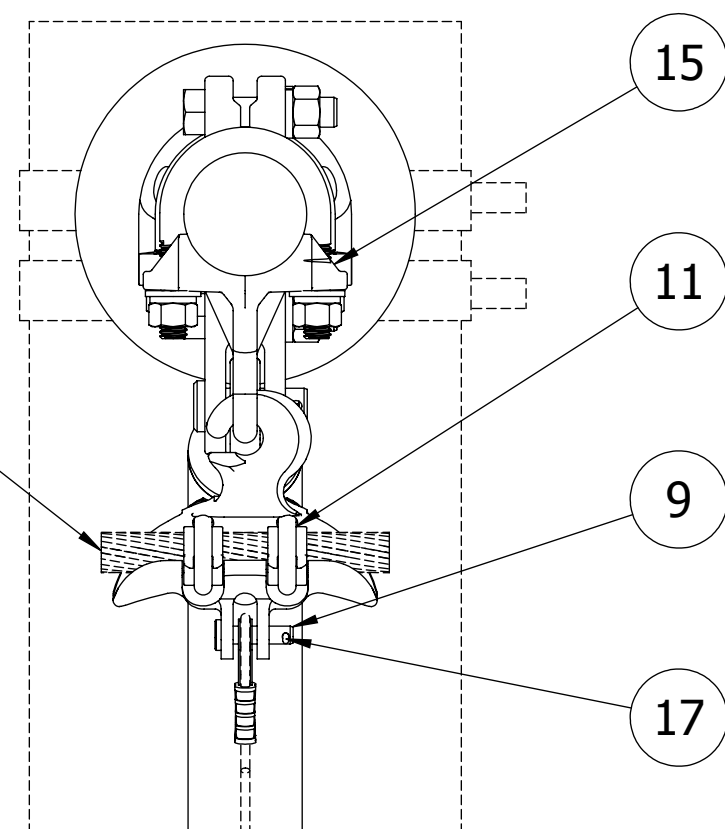
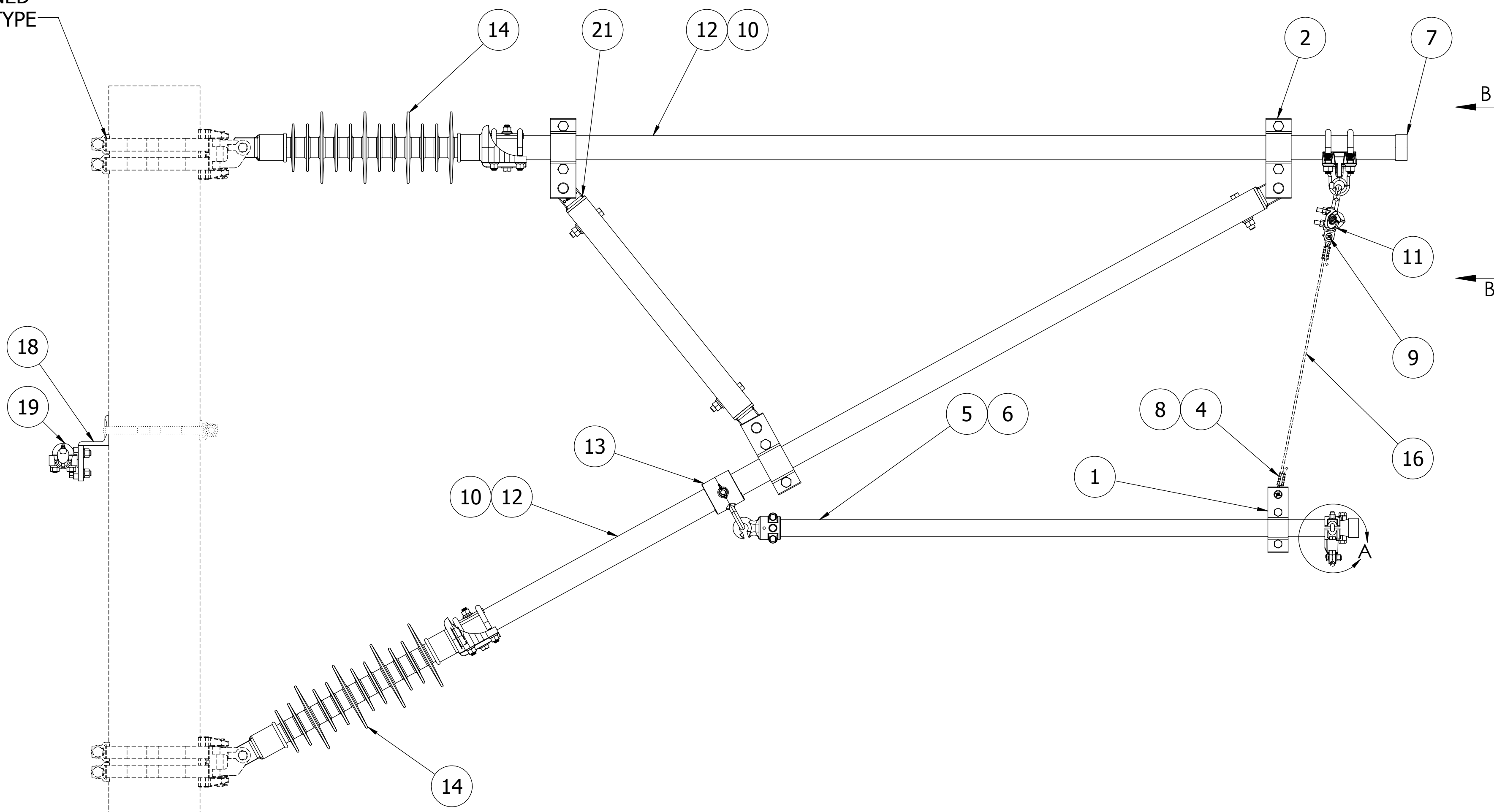


300 MCM - 500 MCM MESSENGER WIRE



SECTION B-B

ATTACHMENT DETERMINED BY POLE TYPE



ITEM		PART NUMBER		DESCRIPTION
1	1	BSCA125-63-A01	CLAMP, PIPE, CLEVIS, 1-1/4" IPS, EXT, AL	
2	3	BSCA200-75-A01	CLAMP, PIPE, CLEVIS, 2" IPS, 3/4" PIN, EXT, AL	
3	1	CCH125-38-CS	CLAMP, STEADY ARM, 1-1/4" IPS, CONTACT WIRE HOLDER	
4	2	CSNP-19PL	SLEEVE, COMPRESSION, 3/16", PLAIN	
5	1	CSA125-7200-S	STEADY ARM, 1-1/4" IPS, STRAIGHT, SCH 80, HDG	
6	1	ESC125	CAP, 1-1/4" IPS SEAL, EXTERNAL PLASTIC, BLACK	
7	1	ESC200	CAP, 2" IPS SEAL, EXTERNAL PLASTIC, BLACK	
8	2	G408-19	THIMBLE, 3/16", OPEN, HDG	
9	1	GSCP38-0033	CLEVIS PIN, 3/8" DIA X 1-11/32" H X 1-1/2" OAL, GR5, HDG	
10	2	ISC200E	PLUG, 2" IPS, INTERNAL PLASTIC, SCH 80 PIPE SEAL	
11	1	MSU821-SR-SS	CLAMP, HOOK EYE SUSPENSION, .630" DIA. TO .814" DIA., BRZ, SS HARDWARE	
12	*	PGSB200-80	PIPE, 2" IPS, SCH 80, ASTM A53, GR B, HDG/ASTM A123	
13	1	PLCT200-02	PIPE CLAMP, 2" IPS, SINGLE STEADY ARM, FR, AL	
14	2	SA-B0406-04	INSULATOR, STRUT, TONGUE, 2" IPS, 25KV	
15	1	SA-B0420-01	CLAMP, 2" IPS PIPE TO FR EYE, BRZ	
16	*	SSAC-19	WIRE ROPE, 3/16" DIA, 7X19, TYPE SS 304, BS:3330 LBS	
17	1	SSCP130500	COTTER PIN, HUMPBACK, 1/8" X 1/2", SS	
18	1	SUS-BKT-K01	BRACKET, STATIC WIRE CLAMP MTG	
19	1	SUS63-AA	CLAMP, STATIC WIRE, AL, FITS 1/0 (0.373D)	
20	1	TCDS-B3406-03	CLAMP, SWIVEL CONTACT WIRE, 4/0 - 350 MCM, 3/8"-16 MALE THD	
21	3	TPSC200-B0505-01	CLAMP, PIPE EYE, 2" SCH 80, HDG, INTERNAL	

LOCATION		CONTRACT NO		CUST/CONTR																															
<p>THIS DRAWING AND ALL INFORMATION ON IT IS THE PROPERTY OF AFL. IT IS CONFIDENTIAL AND IT IS GIVEN TO YOU FOR A LIMITED PURPOSE AND MUST BE RETURNED UPON REQUEST. NEITHER THIS DRAWING OR ANY PART OF IT NOR ANY INFORMATION CONCERNING IT MAY BE COPIED, EXHIBITED, OR FURNISHED TO OTHERS NOR PHOTOGRAPHS TAKEN OF ANY ARTICLE FABRICATED OR ASSEMBLED FROM THE DRAWING WITHOUT THE CONSENT OF AFL.</p>																																			
<table border="1"> <thead> <tr> <th colspan="6">REVISIONS</th> </tr> <tr> <th>REV</th> <th>DESCRIPTION</th> <th>DATE</th> <th>BY</th> <th>APR</th> <th></th> </tr> </thead> <tbody> <tr> <td> </td> <td> </td> <td> </td> <td> </td> <td> </td> <td> </td> </tr> <tr> <td> </td> <td> </td> <td> </td> <td> </td> <td> </td> <td> </td> </tr> <tr> <td> </td> <td> </td> <td> </td> <td> </td> <td> </td> <td> </td> </tr> </tbody> </table>						REVISIONS						REV	DESCRIPTION	DATE	BY	APR																			
REVISIONS																																			
REV	DESCRIPTION	DATE	BY	APR																															
DRN BY: EE DRN DATE: 4.20.15 CHK BY: JL CHK DATE: 4.20.15 PA2015.231.0				CANTILEVER, OUT-OF-RUNNING, 25KVAC, CW: 4/0 TO 350																															
REV 0	CA1-HSR-01	DWG NO	AFLS-CA1-HSR-01	1 OF 1																															