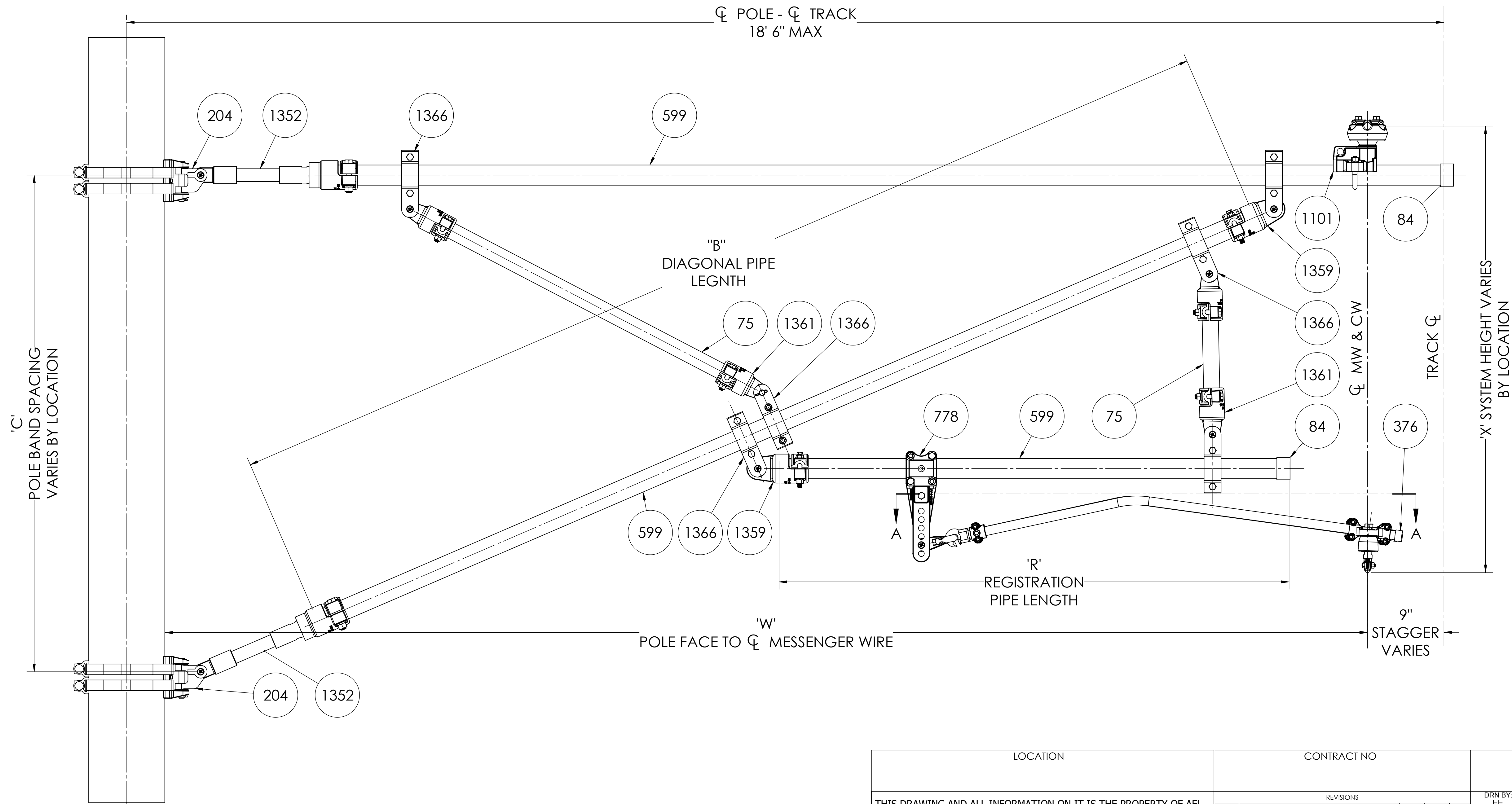
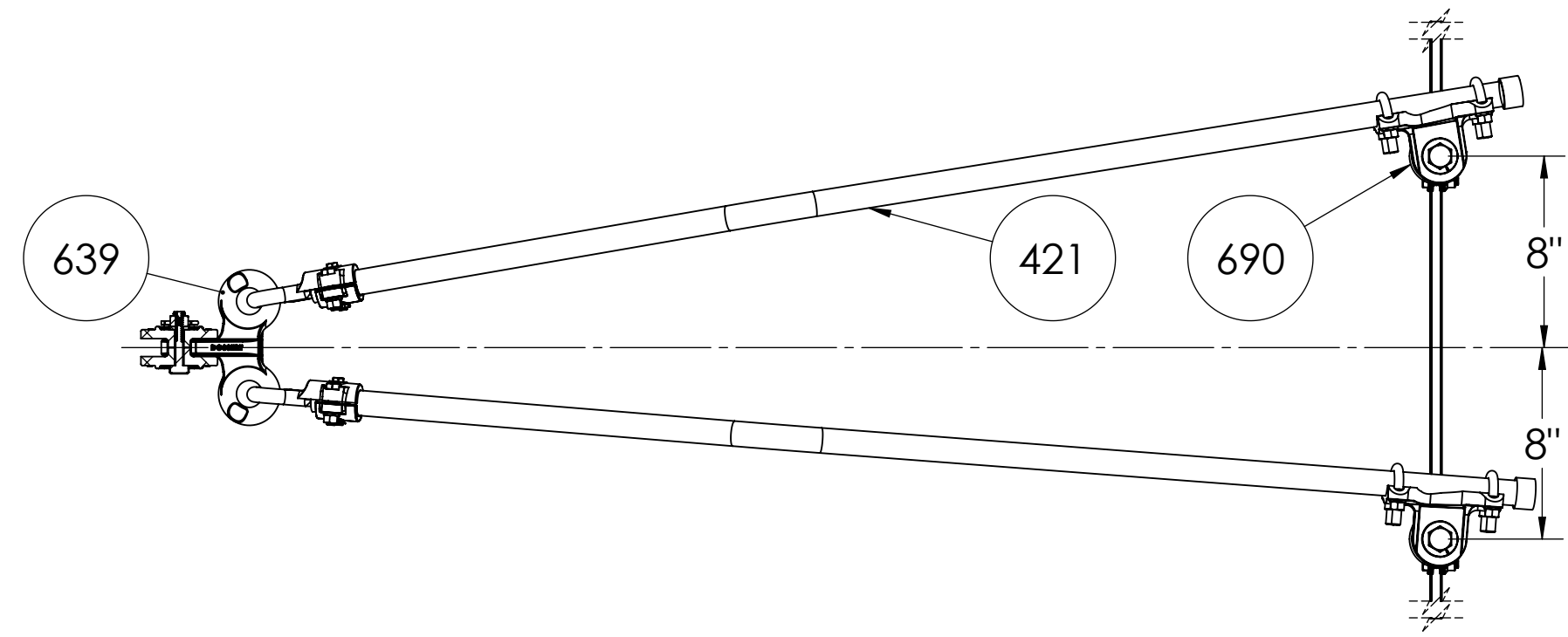



ITEM #	QTY.	PART NUMBER	DESCRIPTION
75	*	PGSB150-40	PIPE, 1.50IPS X SCH 40 WALL, ASTM A106, GR B
84	2	ESC200	CAP, 2" IPS SEAL, EXTERNAL PLASTIC
204	2	PBA-HCB-A01	POLE BAND W/ HINGE
376	2	ESC75	END CAP, 3/4" IPS
421	2	CSA75-1BSR-AA840	STEADY ARM, 3/4 IPS, 1-BEND, SCH80, GR-B, RL:
599	*	PGSB200-40-L	PIPE, 2" IPS X SCH 40 WALL, ASTM A106, GR B, TYPE E
639	1	DDEL90-FR-AA	LINK, DOUBLE RING - TONGUE 90 DEG
690	2	CSCA100-6-5AA	CLAMP, INSULATED CONTACT SWIVEL
778	1	ADB200-S-AA	ADJUSTABLE DROP BRACKET, 2" IPS
1101	1	MSCAI821-20050S-A06	INSULATOR MESSENGER SADDLE, AA 2"IPS, 500MCM SINGLE
1352	2	INS-ST2-A13	STRUT INSULATOR, 2" IPS
1359	2	TPSC200-C-63	PIPE TO EYE END CLAMP
1361	4	TPSC150-C-63-AA	END PIPE CLAMP, TONGUE, 1 1/2" IPS, AL
1366	6	BSCA200-63-A03	CLEVIS PIPE CLAMP, 2" IPS, 5/8" PIN. ADDED CLEARANCE



LOCATION		CONTRACT NO		CUST/CONTR	
<p>THIS DRAWING AND ALL INFORMATION ON IT IS THE PROPERTY OF AFL. IT IS CONFIDENTIAL AND IT IS GIVEN TO YOU FOR A LIMITED PURPOSE AND MUST BE RETURNED UPON REQUEST. NEITHER THIS DRAWING OR ANY PART OF IT NOR ANY INFORMATION CONCERNING IT MAY BE COPIED, EXHIBITED, OR FURNISHED TO OTHERS NOR PHOTOGRAPHS TAKEN OF ANY ARTICLE FABRICATED OR ASSEMBLED FROM THE DRAWING WITHOUT THE CONSENT OF AFL.</p>					
REVISIONS					
REV	DESCRIPTION	DATE	BY	APR	
1	UPDATED PARTS, BRACING	8.27.14	EE	JL	
DRN BY: EE			DRN DATE: 9.04.14		
CHK BY: JL			CHK DATE: 1.27.14		
REV 1			PA9.04.14		
AFLS-CA0-LR-05		AFLS-CA0-LR-05		1 OF 1	



CANTILEVER PULL OFF HEAVY LD
MW:500 CW:350