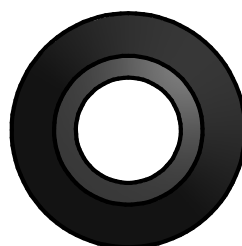
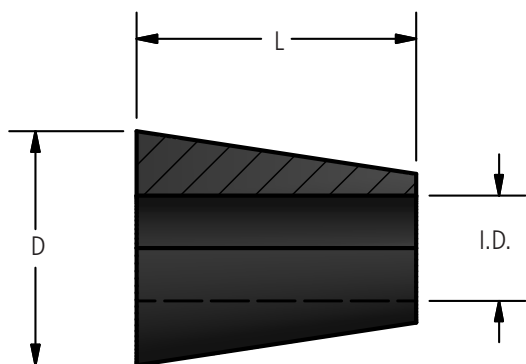


DOSSERT®

Type CRW Thermal Insulating Wedge

A thermal insulating wedge which is placed over the compressed tubular sections of outlets on types CB10R and CB6R fusible crab connectors. The wedges provide a thermal insulating protection from heat generated by fusible sections for the rubber taping which is wound from the cable insulation over the tubular outlet to the molded insulation of the connector.



Ordering Information

CATALOG NUMBER	APPLICATION	DIMENSION IN INCHES		
		I.D.	D.	L
CRW-21	On 4/0 Tubing Outlet	3/4	2 1/8	2 3/4
CRW-50	On 500 MCM Tubing Outlet	1 1/8	2 3/16	3