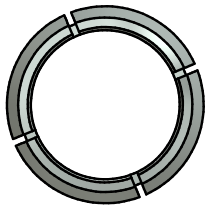


# Type C Tapered Compression Sleeve

Designed for use with type MA cable receptacles. Each size is machined with close tolerances for a specific cable size. A low angle of taper provides for greater mechanical advantage effecting a high clamping action. Internal serrations further add to the electrical contact efficiency and secureness of grip.



## Ordering Information

Cable Size	D in inches	Sleeve Catalog Nos. for Use with Cable Receptacle No.											
		MA-21	MA-25	MA-30	MA-40	MA-50	MA-60	MA-80	MA-100	MA-125	MA-150	MA-175	MA-200
6 STR	0.184	C21-2	C25-2	C30-2									
4 STR	0.232	C21-4	C25-4	C30-4									
2 STR	0.292	C21-6	C25-6	C30-6	C40-6	C50-6							
1 STR	0.332	C21-8	C25-8	C30-8	C40-8	C50-8							
1/0 STR	0.372	C21-10	C25-10	C30-10	C40-10	C50-10							
2/0 STR	0.419	C21-13	C25-13	C30-13	C40-13	C50-13							
3/0 STR	0.47	C21-17	C25-17	C30-17	C40-17	C50-17							
4/0 STR	0.528	C21-21	C25-21	C30-21	C40-21	C50-21							
250 MCM	0.575		C25-25	C30-25	C40-25	C50-25	C60-25						
300 MCM	0.63			C30-30	C40-30	C50-30	C60-30						
350 MCM	0.681				C40-35	C50-35	C60-35	C80-35					
400 MCM	0.728				C40-40	C50-40	C60-40	C80-40					
500 MCM	0.813					C50-50	C60-50	C80-50	C100-50				
550 MCM	0.855						C60-55	C80-55	C100-55				
600 MCM	0.893						C60-60	C80-60	C100-60				
650 MCM	0.929							C80-65	C100-65				
700 MCM	0.964							C80-70	C100-70				
750 MCM	0.998							C80-75	C100-75	C125-75			
800 MCM	1.031							C80-80	C100-80	C125-80			
850 MCM	1.062								C100-85	C125-85			
900 MCM	1.094								C100-90	C125-90			
950 MCM	1.123								C100-95	C125-95			
1000 MCM	1.152								C100-100	C125-100	C150-100		
1250 MCM	1.289									C125-125	C150-125	C175-125	
1500 MCM	1.412										C150-150	C175-150	C200-150
1750 MCM	1.526											C175-175	C200-175
2000 MCM	1.632												C200-200

AFL's Dossert® product line offers a wide range of substation accessories in low voltage up to 765 kV applications in bronze or aluminum materials.