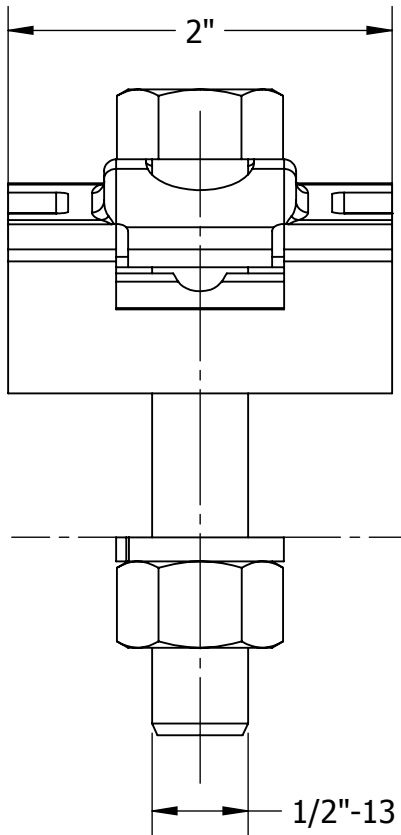
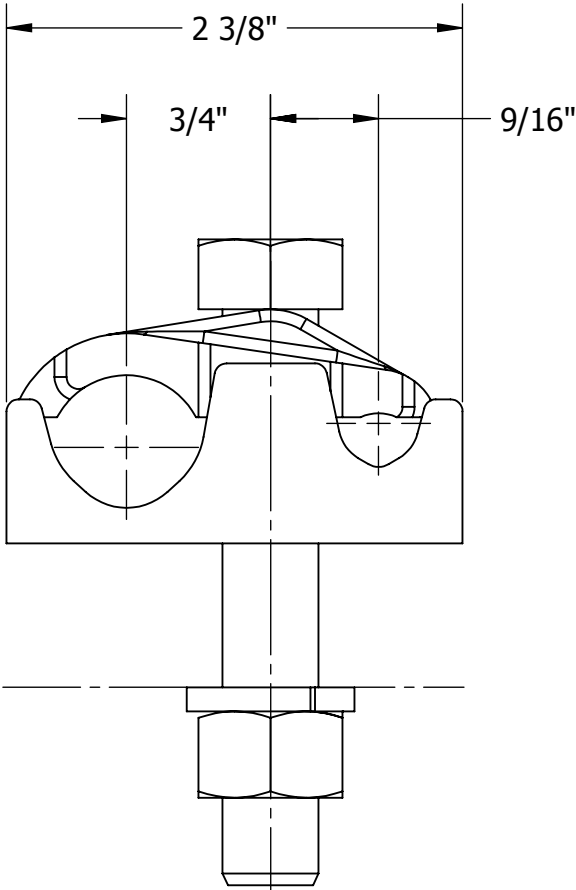
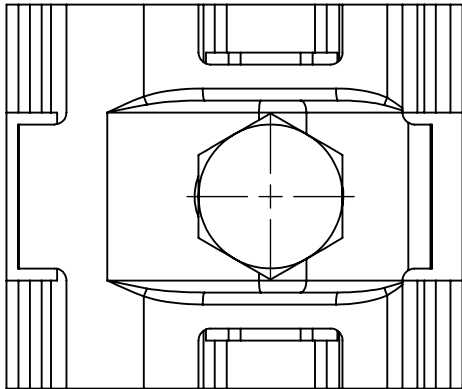


THIS DRAWING AND ALL INFORMATION ON IT IS THE PROPERTY OF AFL. IT IS CONFIDENTIAL AND IT IS GIVEN TO YOU FOR A LIMITED PURPOSE AND MUST BE RETURNED UPON REQUEST. NEITHER THIS DRAWING OR ANY PART OF IT NOR ANY INFORMATION CONCERNING IT MAY BE COPIED, EXHIBITED, OR FURNISHED TO OTHERS NOR PHOTOGRAPHS TAKEN OF ANY ARTICLE FABRICATED OR ASSEMBLED FROM THE DRAWING WITHOUT THE CONSENT OF AFL.

ITEM NO:


DWG. NO:



**MATERIAL:**  
ALUMINUM BRONZE ASTM B30  
BOLTS, NUTS & LOCKWASHERS - SILICON BRONZE

BOLT SIZES	WRENCH/ SOCKET SIZES	SILICON BRONZE TORQUE VALUES (FT-LBS)
1/2-13	3/4 HEX	40

WT: 1.03 LB

THIS DRAWING ASS	LOCATION					CONTRACT NO		CUST / CONTR		
	REVISIONS					DRN BY: JL  DRN DATE: 9.18.17  CHK BY: JL  CHK DATE: 9.18.17  PA 2017.359				
	REV	DESCRIPTION	DATE	BY	APR		CLAMP, GROUND, 2/0 STR TO 500 MCM CABLE, BRZ			
					REV 0		PART NO:  GA50-13			1 OF 1