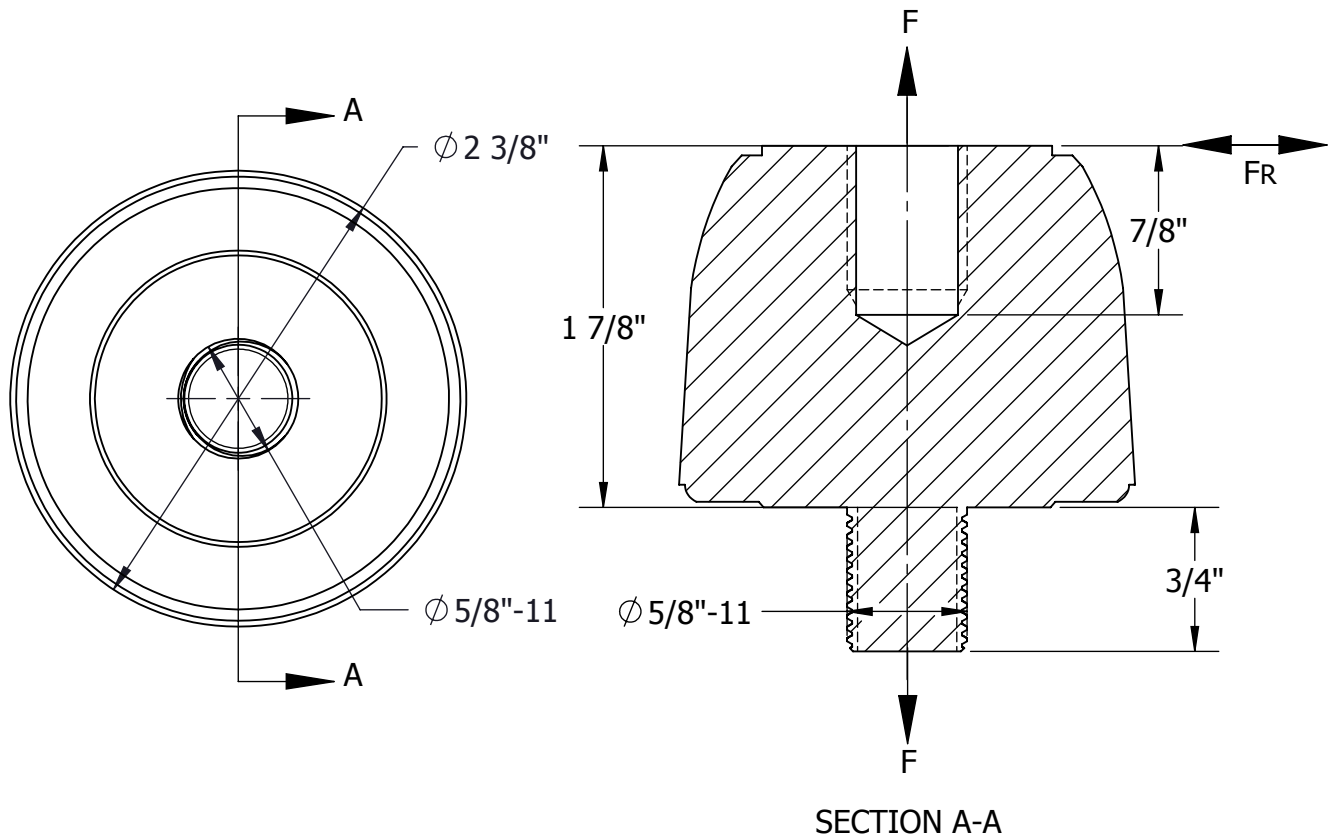


DWG. NO:



MATERIAL:

**BODY - GLASS REINFORCED POLYESTER**

INSERTS - STEEL, ZINC PLATED DICHROMATE COATING

### MECHANICAL RATINGS:

MIN. ULTIMATE TENSILE LOAD (F): 10.000 LBS

MIN. ULTIMATE CANTILEVER LOAD (FR): 10,000 LBS  
3,000 IN-LBS

ELECTRICAL RATING:

**VOLTAGE RATINGS:** 750 VDC


LEAKAGE DISTANCE: 2.44 IN

DRY FLASHOVER: 25 kV

WET FLASHOVER: 15 kV (HORZ), 12 kV (VERT)

ULTIMATE PUNCTURE: 35 kV (TESTED IN OIL)

WT: 0.3 LB

LOCATION				CONTRACT NO		CUST / CONTR	
REVISIONS				DRN BY: HV			
DESCRIPTION				DRN DATE: 10.19.11			
				CHK BY: JL		INSULATOR, SPOOL, SML:10K	
				CHK DATE: 10.19.11			
				PA 2017.270.0			
				REV 0	PART NO: INS-SPOOL	1 OF 1	