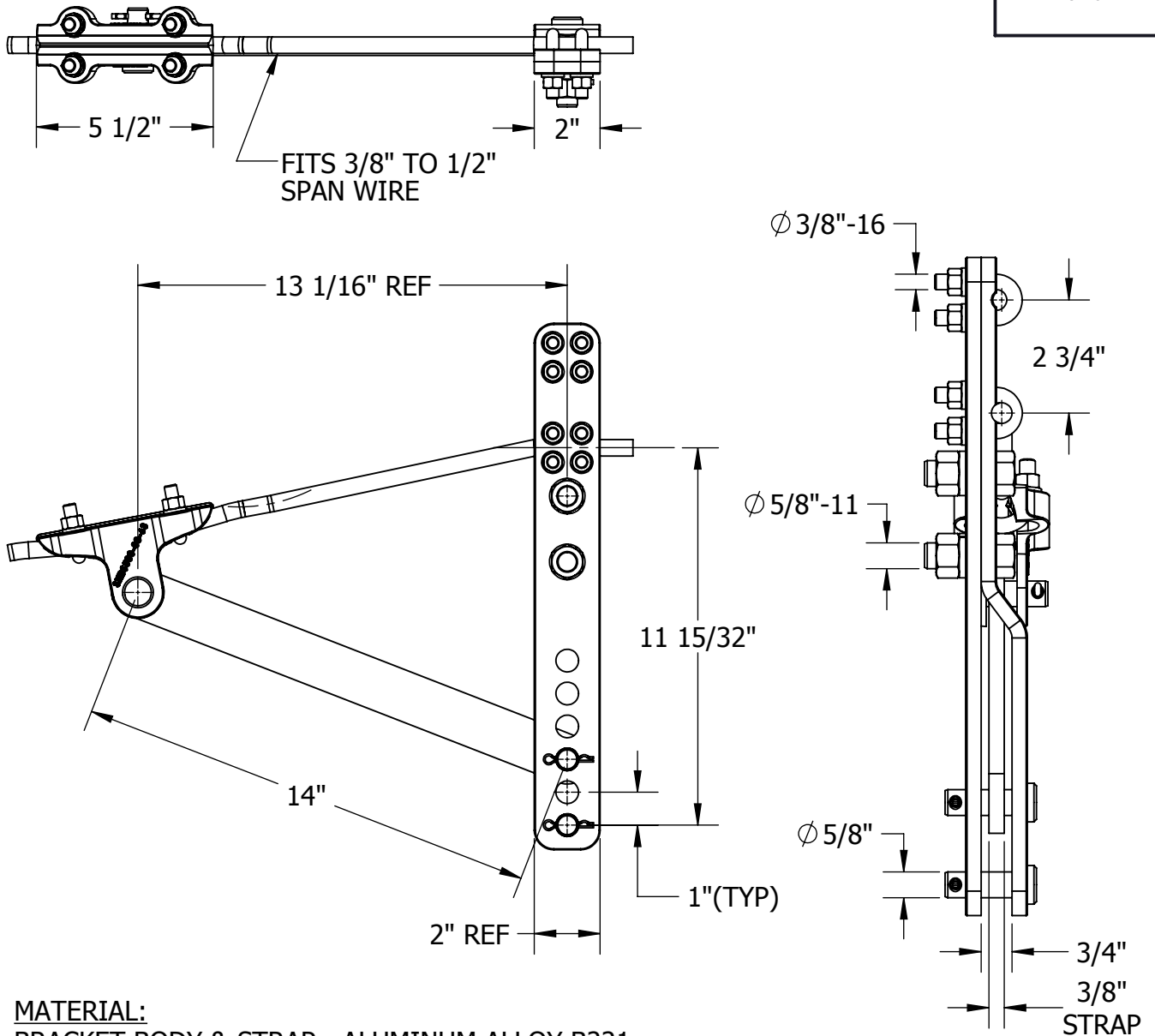


THIS DRAWING AND ALL INFORMATION ON IT IS THE PROPERTY OF AFL. IT IS CONFIDENTIAL AND IT IS GIVEN TO YOU FOR A LIMITED PURPOSE AND MUST BE RETURNED UPON REQUEST. NEITHER THIS DRAWING OR ANY PART OF IT NOR ANY INFORMATION CONCERNING IT MAY BE COPIED, EXHIBITED, OR FURNISHED TO OTHERS NOR PHOTOGRAPHS TAKEN OF ANY ARTICLE FABRICATED OR ASSEMBLED FROM THE DRAWING WITHOUT THE CONSENT OF AFL.

ITEM NO:

DWG. NO:



MATERIAL:

BRACKET BODY & STRAP - ALUMINUM ALLOY B221

BRACE CLAMP BODY - ALUMINUM BRONZE ASTM B30

U-BOLTS & NUTS - SILICON BRONZE


CLEVIS PIN- STEEL, H.D.G*

BOLTS, U-BOLTS, LOCKWASHERS & COTTER PINS - STAINLESS STEEL

BOLT SIZES	WRENCH/ SOCKET SIZES	TORQUE VALUES (FT-LBS)
3/8-16	9/16 HEX	23
1/2-13	3/4 HEX	55

WT: 6.41 LB

* = HOT DIP GALVANIZED

THIS DRAWING ASSUMES	LOCATION					CONTRACT NO		CUST / CONTR	
	REVISIONS					DRN BY: HV DRN DATE: 7.27.17 CHK BY: JL CHK DATE: 7.27.17 PA 2015-231.0			
	REV	DESCRIPTION	DATE	BY	APR		CLAMP, SPAN WIRE 7/16", DROP OF 11-15/32", AL		
REV 0		PART NO:		DWAS44AA-63-A01			1 OF 1		