



Bronze Compression Connectors

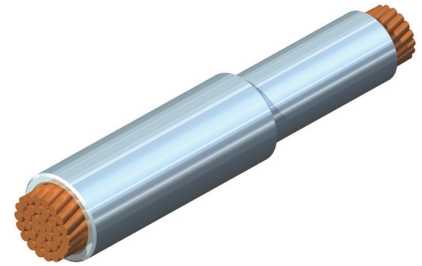
DOSSERT®

TYPE DPR Copper Reducing Coupler

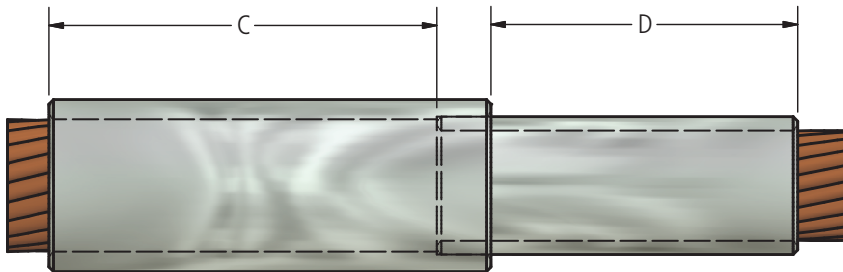
A Seamless reducing coupler for splicing two different sized cables end-to-end. The larger cable is inserted first and stops against the center of the connector where the small diameter portion begins. This insures that both conductors are at the proper depth before crimping. Entrance chamfers are provided to aid in cable insertion. Accepting a wide range of cable diameters, connectors are stamped with full catalog numbers and conductor sizes for quick identification.

Material

Tin plated copper alloy



Bronze Compression Connectors





DOSSERT®

TYPE DPR Copper Reducing Coupler

Ordering Information

CATALOG NUMBER	CABLE SIZE		DIMENSIONS IN INCHES	
	RUN	TAP	C	D
DPR4-2	4 Str.	6 Str.	1 1/8	1 1/4
DPR6-2	2 Str.	6 Str.	1 1/4	1 1/8
DPR6-4	2 Str.	4 Str.	1 1/4	1 1/8
DPR10-2	1/0 Str.	6 Str.	1 3/8	1 1/8
DPR10-4	1/0 Str.	4 Str.	1 3/8	1 1/8
DPR10-6	1/0 Str.	2 Str.	1 3/8	1 1/8
DPR13-2	2/0 Str.	6 Str.	1 1/2	1 1/8
DPR13-4	2/0 Str.	4 Str.	1 1/2	1 1/8
DPR13-6	2/0 Str.	2 Str.	1 1/2	1 1/4
DPR13-10	2/0 Str.	1/0 Str.	1 1/2	1 3/8
DPR21-2	4/0 Str.	6 Str.	1 5/8	1 1/8
DPR21-4	4/0 Str.	4 Str.	1 5/8	1 1/8
DPR21-6	4/0 Str.	2 Str.	1 5/8	1 1/4
DPR21-10	4/0 Str.	1/0 Str.	1 5/8	1 3/8
DPR21-13	4/0 Str.	2/0 Str.	1 5/8	1 1/2
DPR25-4	250 MCM	4 Str.	1 5/8	1 1/8
DPR25-6	250 MCM	2 Str.	1 5/8	1 1/4
DPR25-10	250 MCM	1/0 Str.	1 5/8	1 3/8
DPR25-13	250 MCM	2/0 Str.	1 5/8	1 1/2
DPR25-21	250 MCM	4/0 Str.	1 5/8	1 5/8
DPR35-6	350 MCM	2 Str.	2	1 1/4
DPR35-10	350 MCM	1/0 Str.	2	1 3/8
DPR35-13	350 MCM	2/0 Str.	2	1 1/2
DPR35-21	350 MCM	4/0 Str.	2	1 5/8
DPR35-25	350 MCM	250 MCM	2	1 5/8
DPR50-10	500 MCM	1/0 Str.	2 1/4	1 3/8
DPR50-13	500 MCM	2/0 Str.	2 1/4	1 1/2
DPR50-21	500 MCM	4/0 Str.	2 1/4	1 5/8
DPR50-25	500 MCM	250 MCM	2 1/4	1 5/8
DPR50-35	500 MCM	350 MCM	2 1/4	2
DPR75-13	750 MCM	2/0 Str.	2 7/8	1 1/2
DPR75-21	750 MCM	4/0 Str.	2 7/8	1 5/8
DPR75-25	750 MCM	250 MCM	2 7/8	1 5/8
DPR7-5.35	750 MCM	350 MCM	2 7/8	2
DPR75-50	750 MCM	500 MCM	2 7/8	2 1/4
DPR100-21	1000 MCM	4/0 Str.	3	1 5/8
DPR100-25	1000 MCM	250 MCM	3	1 5/8
DPR100-35	1000 MCM	350 MCM	3	2
DPR100-50	1000 MCM	500 MCM	3	2 1/4
DPR100-75	1000 MCM	750 MCM	3	2 7/8
DPR150-25	1500 MCM	250 MCM	3 1/4	1 5/8
DPR150-35	1500 MCM	350 MCM	3 1/4	2
DPR150-50	1500 MCM	500 MCM	3 1/4	2 1/4
DPR150-75	1500 MCM	750 MCM	3 1/4	2 7/8
DPR150-100	1500 MCM	1000 MCM	3 1/4	3

For information on installation tools refer to pages 246 and 247.