

TYPE SWCTA-AA Swage Cable Angled Terminal

A swage type cable angled terminal on a nema pad.

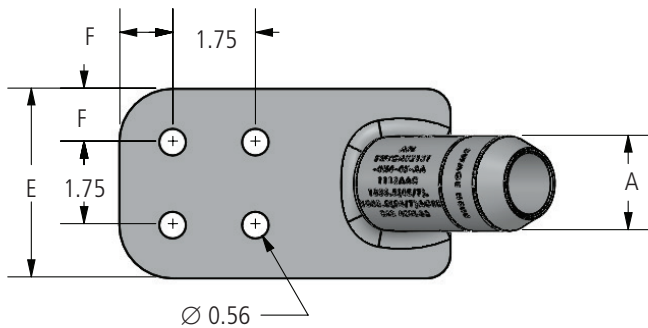
Material

Aluminum Alloy

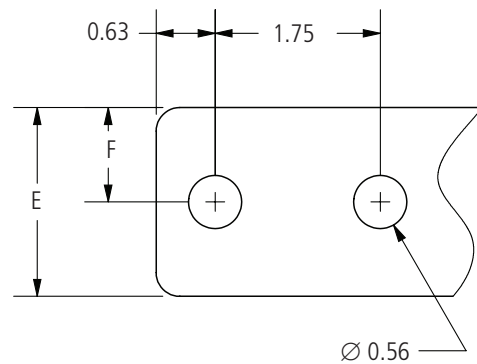
Notes

- Prefilled with AFL Filler Compound (AFC) and capped.
- For Electro Tin plate add "-SN" to AFL No.
EX: SWCTA2026-4N-45-AA-SN

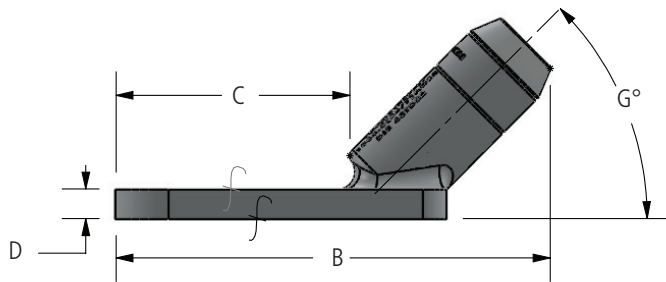
f—Machine Finish



Pad Detail 2



Pad Detail 1



Ordering Information

AFL NO.	CABLE SIZE		PAD DETAIL	DIMENSIONS (inches)							DIE SIZE	VOLTAGE RATING (kV)
	AAC	ACSR		A	B	C	D	E	F	G		
SWCTA1613-2N-15-AA	2/0	1/0 (6/1)	1	1.00	7.20	3.84	0.38	2.00	1.00	15.0	45TD16	230
SWCTA1613-2N-45-AA			1	1.00	6.84	3.94	0.38	2.00	1.00	45.0	45TD16	230
SWCTA1613-4N-15-AA			2	1.00	7.20	3.84	0.38	3.00	0.63	15.0	45TD16	230
SWCTA1613-4N-45-AA			2	1.00	6.84	3.94	0.38	3.00	0.63	45.0	45TD16	230
SWCTA1613-4N4-15-AA			2	1.00	8.20	4.84	0.38	4.00	1.13	15.0	45TD16	230
SWCTA1613-4N4-45-AA			2	1.00	7.84	4.94	0.38	4.00	1.13	45.0	45TD16	230

continued →

TYPE SWCTA-AA

Swage Cable Angled Terminal

Ordering Information

AFL NO.	CABLE SIZE		PAD DETAIL	DIMENSIONS (inches)							DIE SIZE	VOLTAGE RATING (kV)
	AAC	ACSR		A	B	C	D	E	F	G		
SWCTA1617-2N-15-AA	3/0	2/0 (6/1)	1	1.00	7.20	3.84	0.38	2.00	1.00	15.0	45TD16	230
SWCTA1617-2N-45-AA			1	1.00	6.84	3.94	0.38	2.00	1.00	45.0	45TD16	230
SWCTA1617-4N-15-AA			2	1.00	7.20	3.84	0.38	3.00	0.63	15.0	45TD16	230
SWCTA1617-4N-45-AA			2	1.00	7.34	4.44	0.38	3.00	0.63	45.0	45TD16	230
SWCTA1617-4N4-15-AA			2	1.00	8.20	4.84	0.38	4.00	1.13	15.0	45TD16	230
SWCTA1617-4N4-45-AA			2	1.00	7.84	4.94	0.38	4.00	1.13	45.0	45TD16	230
SWCTA1621-2N-15-AA	4/0	3/0 (6/1)	1	1.00	7.20	3.84	0.38	2.00	1.00	15.0	45TD16	230
SWCTA1621-2N-45-AA			1	1.00	6.84	3.94	0.38	2.00	1.00	45.0	45TD16	230
SWCTA1621-4N-15-AA			2	1.00	7.20	3.84	0.38	3.00	0.63	15.0	45TD16	230
SWCTA1621-4N-45-AA			2	1.00	6.84	3.94	0.38	3.00	0.63	45.0	45TD16	230
SWCTA1621-4N4-15-AA			2	1.00	8.20	4.84	0.38	4.00	1.13	15.0	45TD16	230
SWCTA1621-4N4-45-AA			2	1.00	7.84	4.94	0.38	4.00	1.13	45.0	45TD16	230
SWCTA1625-2N-15-AA	250	4/0 (6/1)	1	1.00	7.20	3.84	0.38	2.00	1.00	15.0	45TD16	230
SWCTA1625-2N-45-AA			1	1.00	6.84	3.94	0.38	2.00	1.00	45.0	45TD16	230
SWCTA1625-4N-15-AA			2	1.00	7.20	3.84	0.38	3.00	0.63	15.0	45TD16	230
SWCTA1625-4N-45-AA			2	1.00	6.84	3.94	0.38	3.00	0.63	45.0	45TD16	230
SWCTA1625-4N4-15-AA			2	1.00	8.20	4.84	0.38	4.00	1.13	15.0	45TD16	230
SWCTA1625-4N4-45-AA			2	1.00	7.84	4.94	0.38	4.00	1.13	45.0	45TD16	230
SWCTA2026-2N-15-AA	266.8	266.8 (18/1)	1	1.25	7.67	3.78	0.63	2.00	1.00	15.0	45TD20	230
SWCTA2026-2N-45-AA			1	1.25	7.08	3.67	0.63	2.00	1.00	45.0	45TD20	230
SWCTA2026-4N-15-AA			2	1.25	7.67	3.78	0.63	3.00	0.63	15.0	45TD20	345
SWCTA2026-4N-45-AA			2	1.25	7.08	3.67	0.63	3.00	0.63	45.0	45TD20	345
SWCTA2026-4N4-15-AA			2	1.25	8.67	4.78	0.63	4.00	1.13	15.0	45TD20	345
SWCTA2026-4N4-45-AA			2	1.25	8.08	4.67	0.63	4.00	1.13	45.0	45TD20	345
SWCTA2030-2N-15-AA	300	266.8 (26/7)	1	1.25	7.67	3.78	0.63	2.00	1.00	15.0	45TD20	230
SWCTA2030-2N-45-AA			1	1.25	7.08	3.67	0.63	2.00	1.00	45.0	45TD20	230
SWCTA2030-4N-15-AA			2	1.25	7.67	3.78	0.63	3.00	0.63	15.0	45TD20	345
SWCTA2030-4N-45-AA			2	1.25	7.08	3.67	0.63	3.00	0.63	45.0	45TD20	345
SWCTA2030-4N4-15-AA			2	1.25	8.67	4.78	0.63	4.00	1.13	15.0	45TD20	345
SWCTA2030-4N4-45-AA			2	1.25	8.08	4.67	0.63	4.00	1.13	45.0	45TD20	345
SWCTA2035-2N-15-AA	336.4, 350	300 (26/7), 336.4 (18/1)	1	1.25	7.67	3.78	0.63	2.00	1.00	15.0	45TD20	230
SWCTA2035-2N-45-AA			1	1.25	7.08	3.67	0.63	2.00	1.00	45.0	45TD20	230
SWCTA2035-4N-15-AA			2	1.25	7.67	3.78	0.63	3.00	0.63	15.0	45TD20	345
SWCTA2035-4N-45-AA			2	1.25	7.58	4.17	0.63	3.00	0.63	45.0	45TD20	345
SWCTA2035-4N4-15-AA			2	1.25	8.67	4.78	0.63	4.00	1.13	15.0	45TD20	345
SWCTA2035-4N4-45-AA			2	1.25	8.08	4.67	0.63	4.00	1.13	45.0	45TD20	345

continued
→

TYPE SWCTA-AA

Swage Cable Angled Terminal

Ordering Information

AFL NO.	CABLE SIZE		PAD DETAIL	DIMENSIONS (inches)							DIE SIZE	VOLTAGE RATING (kV)
	AAC	ACSR		A	B	C	D	E	F	G		
SWCTA2039-2N-15-AA	397.5	336.4 (26/7), 336.4 (30/7), 397.5 (18/1)	1	1.25	7.67	3.78	0.63	2.00	1.00	15.0	45TD20	230
SWCTA2039-2N-45-AA			1	1.25	7.08	3.67	0.63	2.00	1.00	45.0	45TD20	230
SWCTA2039-4N-15-AA			2	1.25	7.67	3.78	0.63	3.00	0.63	15.0	45TD20	345
SWCTA2039-4N-45-AA			2	1.25	7.08	3.67	0.63	3.00	0.63	45.0	45TD20	345
SWCTA2039-4N4-15-AA			2	1.25	8.67	4.78	0.63	4.00	1.13	15.0	45TD20	345
SWCTA2039-4N4-45-AA			2	1.25	8.08	4.67	0.63	4.00	1.13	45.0	45TD20	345
SWCTA2445-2N-15-AA	450	397.5 (24/7), 397.5 (26/7)	1	1.50	8.40	4.21	0.63	2.00	1.00	15.0	45TD24	230
SWCTA2445-2N-30-AA			1	1.50	8.10	4.00	0.63	2.00	1.00	30.0	45TD24	230
SWCTA2445-2N-45-AA			1	1.50	7.64	3.91	0.63	2.00	1.00	45.0	45TD24	230
SWCTA2445-4N-15-AA			2	1.50	8.40	4.21	0.63	3.00	0.63	15.0	45TD24	345
SWCTA2445-4N-45-AA			2	1.50	7.64	3.91	0.63	3.00	0.63	45.0	45TD24	345
SWCTA2445-4N4-15-AA			2	1.50	9.40	5.21	0.63	4.00	1.13	15.0	45TD24	345
SWCTA2445-4N4-45-AA	2	1.50	8.64	4.91	0.63	4.00	1.13	45.0	45TD24	345		
SWCTA2447-2N-15-AA	477	397.5 (30/7)	1	1.50	8.40	4.21	0.63	2.00	1.00	15.0	45TD24	230
SWCTA2447-2N-45-AA			1	1.50	7.64	3.91	0.63	2.00	1.00	45.0	45TD24	230
SWCTA2447-4N-15-AA			2	1.50	8.40	4.21	0.63	3.00	0.63	15.0	45TD24	345
SWCTA2447-4N-45-AA			2	1.50	7.64	3.91	0.63	3.00	0.63	45.0	45TD24	345
SWCTA2447-4N4-15-AA			2	1.50	9.40	5.21	0.63	4.00	1.13	15.0	45TD24	345
SWCTA2447-4N4-45-AA			2	1.50	8.64	4.91	0.63	4.00	1.13	45.0	45TD24	345
SWCTA2450-2N-15-AA	500	477 (18/1)	1	1.50	8.40	4.21	0.63	2.00	1.00	15.0	45TD24	230
SWCTA2450-2N-45-AA			1	1.50	7.64	3.91	0.63	2.00	1.00	45.0	45TD24	230
SWCTA2450-4N-15-AA			2	1.50	8.40	4.21	0.63	3.00	0.63	15.0	45TD24	345
SWCTA2450-4N-45-AA			2	1.50	7.64	3.91	0.63	3.00	0.63	45.0	45TD24	345
SWCTA2450-4N4-15-AA			2	1.50	9.40	5.21	0.63	4.00	1.13	15.0	45TD24	345
SWCTA2450-4N4-45-AA			2	1.50	8.64	4.91	0.63	4.00	1.13	45.0	45TD24	345
SWCTA2455-2N-15-AA	556.5	477 (24/7), 477 (26/7)	1	1.50	8.40	4.21	0.63	2.00	1.00	15.0	45TD24	230
SWCTA2455-2N-45-AA			1	1.50	7.64	3.91	0.63	2.00	1.00	45.0	45TD24	230
SWCTA2455-4N-15-AA			2	1.50	8.40	4.21	0.63	3.00	0.63	15.0	45TD24	345
SWCTA2455-4N-45-AA			2	1.50	8.14	4.41	0.63	3.00	0.63	45.0	45TD24	345
SWCTA2455-4N4-15-AA			2	1.50	9.40	5.21	0.63	4.00	1.13	15.0	45TD24	345
SWCTA2455-4N4-45-AA			2	1.50	8.64	4.91	0.63	4.00	1.13	45.0	45TD24	345
SWCTA2860-2N-15-AA	600	477 (30/7), 556.5 (18/1)	1	1.75	8.91	4.42	0.63	2.00	1.00	15.0	45TD28	230
SWCTA2860-2N-45-AA			1	1.75	8.19	4.14	0.63	2.00	1.00	45.0	45TD28	230
SWCTA2860-4N-15-AA			2	1.75	8.91	4.42	0.63	3.00	0.63	15.0	45TD28	345
SWCTA2860-4N-45-AA			2	1.75	8.19	4.14	0.63	3.00	0.63	45.0	45TD28	345
SWCTA2860-4N4-15-AA			2	1.75	9.41	4.92	0.63	4.00	1.13	15.0	45TD28	345
SWCTA2860-4N4-45-AA			2	1.75	8.69	4.64	0.63	4.00	1.13	45.0	45TD28	345

continued
→

TYPE SWCTA-AA

Swage Cable Angled Terminal

Ordering Information

AFL NO.	CABLE SIZE		PAD DETAIL	DIMENSIONS (inches)						DIE SIZE	VOLTAGE RATING (kV)	
	AAC	ACSR		A	B	C	D	E	F			G
SWCTA2863-2N-15-AA	636	556.5 (24/7), 556.5 (26/7)	1	1.75	8.91	4.42	0.63	2.00	1.00	15.0	45TD28	230
SWCTA2863-2N-45-AA			1	1.75	8.19	4.14	0.63	2.00	1.00	45.0	45TD28	230
SWCTA2863-4N-15-AA			2	1.75	8.91	4.42	0.63	3.00	0.63	15.0	45TD28	345
SWCTA2863-4N-45-AA			2	1.75	8.19	4.14	0.63	3.00	0.63	45.0	45TD28	345
SWCTA2863-4N4-15-AA			2	1.75	9.41	4.92	0.63	4.00	1.13	15.0	45TD28	345
SWCTA2863-4N4-45-AA			2	1.75	8.69	4.64	0.63	4.00	1.13	45.0	45TD28	345
SWCTA2871-2N-15-AA	700, 715.5	556.5 (30/7), 605 (24/7), 605 (26/7), 636 (18/1), 636 (36/1)	1	1.75	8.91	4.42	0.63	2.00	1.00	15.0	45TD28	230
SWCTA2871-2N-45-AA			1	1.75	8.19	4.14	0.63	2.00	1.00	45.0	45TD28	230
SWCTA2871-4N-15-AA			2	1.75	8.91	4.42	0.63	3.00	0.63	15.0	45TD28	345
SWCTA2871-4N-45-AA			2	1.75	8.19	4.14	0.63	3.00	0.63	45.0	45TD28	345
SWCTA2871-4N4-15-AA			2	1.75	9.41	4.92	0.63	4.00	1.13	15.0	45TD28	345
SWCTA2871-4N4-45-AA			2	1.75	8.69	4.64	0.63	4.00	1.13	45.0	45TD28	345
SWCTA3075-2N-15-AA	750	605 (30/7), 605 (30/19), 636 (24/7), 636 (26/7)	1	1.88	8.91	4.39	0.63	2.00	1.00	15.0	45TD30	230
SWCTA3075-2N-45-AA			1	1.88	8.15	4.01	0.63	2.00	1.00	45.0	45TD30	230
SWCTA3075-4N-15-AA			2	1.88	8.91	4.39	0.63	3.00	0.63	15.0	45TD30	345
SWCTA3075-4N-45-AA			2	1.88	8.15	4.01	0.63	3.00	0.63	45.0	45TD30	345
SWCTA3075-4N4-15-AA			2	1.88	9.41	4.89	0.63	4.00	1.13	15.0	45TD30	345
SWCTA3075-4N4-45-AA			2	1.88	8.65	4.51	0.63	4.00	1.13	45.0	45TD30	345
SWCTA3079-2N-15-AA	795	636 (30/7), 636 (30/19), 715.5 (24/7), 715.5 (54/7), 795 (36/1)	1	1.88	8.91	4.39	0.63	2.00	1.00	15.0	45TD30	230
SWCTA3079-2N-45-AA			1	1.88	8.15	4.01	0.63	2.00	1.00	45.0	45TD30	230
SWCTA3079-4N-15-AA			2	1.88	8.91	4.39	0.63	3.00	0.63	15.0	45TD30	345
SWCTA3079-4N-30-AA			2	1.88	8.61	4.12	0.63	3.00	0.63	30.0	45TD30	345
SWCTA3079-4N-45-AA			2	1.88	8.15	4.01	0.63	3.00	0.63	45.0	45TD30	345
SWCTA3079-4N4-15-AA			2	1.88	9.41	4.89	0.63	4.00	1.13	15.0	45TD30	345
SWCTA3079-4N4-45-AA	2	1.88	8.65	4.51	0.63	4.00	1.13	45.0	45TD30	345		
SWCTA3087-2N-15-AA	874.5	715.5 (26/7), 715.5 (30/19), 795 (45/7)	1	1.88	8.91	4.39	0.63	2.00	1.00	15.0	45TD30	230
SWCTA3087-2N-45-AA			1	1.88	8.15	4.01	0.63	2.00	1.00	45.0	45TD30	230
SWCTA3087-4N-15-AA			2	1.88	8.91	4.39	0.63	3.00	0.63	15.0	45TD30	345
SWCTA3087-4N-45-AA			2	1.88	8.15	4.01	0.63	3.00	0.63	45.0	45TD30	345
SWCTA3087-4N4-15-AA			2	1.88	9.41	4.89	0.63	4.00	1.13	15.0	45TD30	345
SWCTA3087-4N4-45-AA			2	1.88	8.65	4.51	0.63	4.00	1.13	45.0	45TD30	345
SWCTA3290-2N-15-AA	900	795 (24/7), 795 (54/7), 795 (26/7)	1	2.00	9.03	4.36	0.75	2.00	1.00	15.0	45TD32	230
SWCTA3290-2N-45-AA			1	2.00	8.19	3.88	0.75	2.00	1.00	45.0	45TD32	230
SWCTA3290-4N-15-AA			2	2.00	9.03	4.36	0.75	3.00	0.63	15.0	45TD32	345
SWCTA3290-4N-45-AA			2	2.00	8.19	3.88	0.75	3.00	0.63	45.0	45TD32	345
SWCTA3290-4N4-15-AA			2	2.00	10.03	5.36	0.75	4.00	1.13	15.0	45TD32	345
SWCTA3290-4N4-45-AA			2	2.00	9.19	4.88	0.75	4.00	1.13	45.0	45TD32	345

continued

TYPE SWCTA-AA

Swage Cable Angled Terminal

Ordering Information

AFL NO.	CABLE SIZE		PAD DETAIL	DIMENSIONS (inches)						DIE SIZE	VOLTAGE RATING (kV)	
	AAC	ACSR		A	B	C	D	E	F			G
SWCTA3295-2N-15-AA	954	795 (30/19), 900 (45/7)	1	2.00	9.03	4.36	0.75	2.00	1.00	15.0	45TD32	230
SWCTA3295-2N-45-AA			1	2.00	8.19	3.88	0.75	2.00	1.00	45.0	45TD32	230
SWCTA3295-4N-15-AA			2	2.00	9.03	4.36	0.75	3.00	0.63	15.0	45TD32	345
SWCTA3295-4N-45-AA			2	2.00	8.19	3.88	0.75	3.00	0.63	45.0	45TD32	345
SWCTA3295-4N4-15-AA			2	2.00	10.03	5.36	0.75	4.00	1.13	15.0	45TD32	345
SWCTA3295-4N4-45-AA			2	2.00	9.19	4.88	0.75	4.00	1.13	45.0	45TD32	345
SWCTA32100-2N-15-AA	1000	874.5 (54/7), 900 (54/7), 954 (45/7)	1	2.00	9.03	4.36	0.75	2.00	1.00	15.0	45TD32	230
SWCTA32100-2N-45-AA			1	2.00	8.19	3.88	0.75	2.00	1.00	45.0	45TD32	230
SWCTA32100-4N-15-AA			2	2.00	9.03	4.36	0.75	3.00	0.63	15.0	45TD32	345
SWCTA32100-4N-45-AA			2	2.00	8.19	3.88	0.75	3.00	0.63	45.0	45TD32	345
SWCTA32100-4N4-15-AA			2	2.00	10.03	5.36	0.75	4.00	1.13	15.0	45TD32	345
SWCTA32100-4N4-45-AA			2	2.00	9.19	4.88	0.75	4.00	1.13	45.0	45TD32	345
SWCTA32103-4N-15-AA	1033.5	954 (54/7)	2	2.00	9.03	4.36	0.75	3.00	0.63	15.0	45TD32	345
SWCTA32103-4N-45-AA			2	2.00	8.19	3.88	0.75	3.00	0.63	45.0	45TD32	345
SWCTA32103-4N4-15-AA			2	2.00	10.03	5.36	0.75	4.00	1.13	15.0	45TD32	345
SWCTA32103-4N4-45-AA			2	2.00	9.19	4.88	0.75	4.00	1.13	45.0	45TD32	345
SWCTA32111-4N-15-AA	1113	1033.5 (45/7), 1033.5 (54/7)	2	2.00	9.03	4.36	0.75	3.00	0.63	15.0	45TD32	345
SWCTA32111-4N-45-AA			2	2.00	8.19	3.88	0.75	3.00	0.63	45.0	45TD32	345
SWCTA32111-4N4-15-AA			2	2.00	10.03	5.36	0.75	4.00	1.13	15.0	45TD32	345
SWCTA32111-4N4-45-AA			2	2.00	9.19	4.88	0.75	4.00	1.13	45.0	45TD32	345
SWCTA36119-4N-15-AA	1192.5	1113 (45/7)	2	2.25	9.67	4.57	0.75	3.00	0.63	15.0	45TD36	345
SWCTA36119-4N-45-AA			2	2.25	8.87	4.11	0.75	3.00	0.63	45.0	45TD36	345
SWCTA36119-4N4-15-AA			2	2.25	10.17	5.07	0.75	4.00	1.13	15.0	45TD36	345
SWCTA36119-4N4-45-AA			2	2.25	9.37	4.61	0.75	4.00	1.13	45.0	45TD36	345
SWCTA36127-4N-15-AA	1272	1113 (54/19), 1192.5 (45/7)	2	2.25	9.67	4.57	0.75	3.00	0.63	15.0	45TD36	345
SWCTA36127-4N-45-AA			2	2.25	8.87	4.11	0.75	3.00	0.63	45.0	45TD36	345
SWCTA36127-4N4-15-AA			2	2.25	10.17	5.07	0.75	4.00	1.13	15.0	45TD36	345
SWCTA36127-4N4-45-AA			2	2.25	9.37	4.61	0.75	4.00	1.13	45.0	45TD36	345
SWCTA36135-4N-15-AA	1351.5	1192.5 (54/19), 1272 (45/7)	2	2.25	9.67	4.57	0.75	3.00	0.63	15.0	45TD36	345
SWCTA36135-4N-30-AA			2	2.25	9.41	4.31	0.75	3.00	0.63	30.0	45TD36	345
SWCTA36135-4N-45-AA			2	2.25	8.87	4.11	0.75	3.00	0.63	45.0	45TD36	345
SWCTA36135-4N4-15-AA			2	2.25	10.17	5.07	0.75	4.00	1.13	15.0	45TD36	345
SWCTA36135-4N4-45-AA			2	2.25	9.37	4.61	0.75	4.00	1.13	45.0	45TD36	345
SWCTA36143-4N-15-AA	1431	1272 (54/19), 1351.5 (45/7)	2	2.25	9.67	4.57	0.75	3.00	0.63	15.0	45TD36	345
SWCTA36143-4N-45-AA			2	2.25	8.87	4.11	0.75	3.00	0.63	45.0	45TD36	345
SWCTA36143-4N4-15-AA			2	2.25	10.17	5.07	0.75	4.00	1.13	15.0	45TD36	345
SWCTA36143-4N4-45-AA			2	2.25	9.37	4.61	0.75	4.00	1.13	45.0	45TD36	345

continued
→