

TYPE PLH-AA

Pipe Bus Support Sliding Ring

Material

Aluminum Alloy

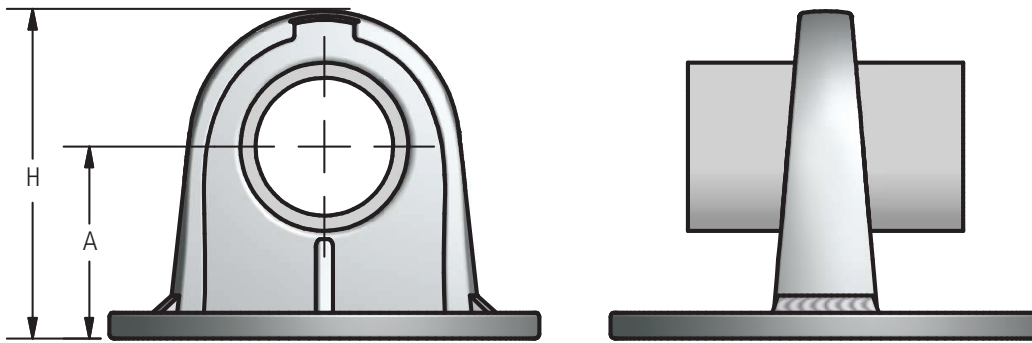
Hardware

Galvanized steel mounting hardware included.



Note

For Chatter Spring, add -CH to catalog number. Example: PLH300-3-CH-AA



Ordering Information

| CATALOG NUMBER | SPS | BOLT CIRCLE | DIMENSIONS IN INCHES | |
|----------------|-------|-------------|----------------------|---------|
| | | | A | H |
| PLH50-3-AA | 1/2 | 3 | 1-3/4 | 3 |
| PLH50-5-AA | 1/2 | 5 | 2-1/8 | 3-3/4 |
| PLH75-3-AA | 3/4 | 3 | 2 | 3-3/8 |
| PLH75-5-AA | 3/4 | 5 | 2-1/4 | 4-1/8 |
| PLH100-3-AA | 1 | 3 | 2 | 3-1/2 |
| PLH100-5-AA | 1 | 5 | 2-1/4 | 4-1/4 |
| PLH125-3-AA | 1-1/4 | 3 | 2-1/4 | 4 |
| PLH125-5-AA | 1-1/4 | 5 | 2-3/8 | 4-3/4 |
| PLH150-3-AA | 1-1/2 | 3 | 2-1/2 | 4-3/8 |
| PLH150-5-AA | 1-1/2 | 5 | 2-1/2 | 5-1/8 |
| PLH200-3-AA | 2 | 3 | 2-3/4 | 4-1/8 |
| PLH200-5-AA | 2 | 5 | 2-3/4 | 5-1/4 |
| PLH250-3-AA | 2-1/2 | 3 | 3-1/8 | 5-1/4 |
| PLH250-5-AA | 2-1/2 | 5 | 3-1/8 | 6 |
| PLH300-3-AA | 3 | 3 | 3-5/8 | 6-5/32 |
| PLH300-5-AA | 3 | 5 | 3-5/8 | 6-5/32 |
| PLH350-3-AA | 3-1/2 | 3 | 4 | 6-25/32 |
| PLH350-5-AA | 3-1/2 | 5 | 4 | 6-25/32 |
| PLH350-7-AA | 3-1/2 | 7 | 4-1/8 | 6-29/32 |
| PLH400-3-AA | 4 | 3 | 4-1/2 | 7-3/8 |
| PLH400-5-AA | 4 | 5 | 4-1/2 | 7-17/32 |
| PLH500-3-AA | 5 | 3 | 5 | 8-9/16 |
| PLH500-5-AA | 5 | 5 | 5 | 8-9/16 |
| PLH500-7-AA | 5 | 7 | 5-1/8 | 8-11/16 |
| PLH600-5-AA | 6 | 5 | 5-1/2 | 9-7/16 |

AFL's Dossert® product line offers a wide range of substation accessories in low voltage up to 765 kV applications in bronze or aluminum materials.