

# DOSSERT®

## Type MIS Insulating Sleeve

An insulating sleeve to facilitate the taping of the MICON outlet. The sleeve makes a snug fit over the MICON outlet as well as the cable insulation. A positive seal is established by several turns of tape at each end of the sleeve. When ordering, specify the catalog number or size of MICON, the cable receptacle size type MA, and the diameter of insulation over cable. For largest sleeve grouping, spacings of MICON outlets must be ascertained to establish feasibility of using sleeves in adjacent positions.

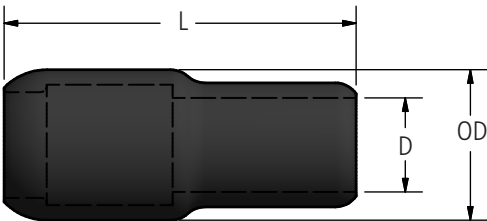
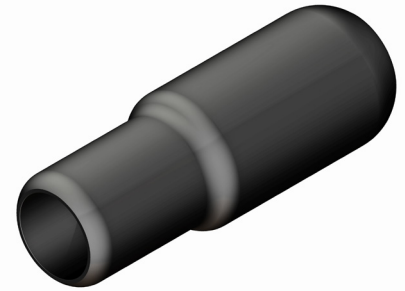


FIG. 1

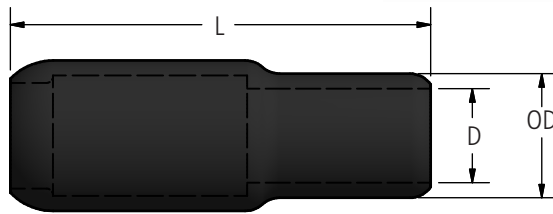


FIG. 2

### Ordering Information

CATALOG NUMBER	FOR USE WITH RECEPTACLES	FIG. NO.	DIMENSIONS IN INCHES		
			D	OD	L
MIS25-30-56	MA-21 MA-25 MA-30	1	9/16	1 15/16	4 13/16
MIS25-30-75		1	3/4	1 15/16	4 13/16
MIS25-30-88		1	7/8	1 15/16	4 13/16
MIS25-30-100		1	1	1 15/16	4 13/16
MIS25-30-112		1	1 1/8	1 15/16	4 13/16
MIS25-60-100	MA-40 MA-50 MA-60	1	1	2 3/16	5 1/4
MIS25-60-112		1	1 1/8	2 3/16	5 1/4
MIS25-60-125		1	1 1/4	2 3/16	5 1/4
MIS25-60-138		1	1 3/8	2 3/16	5 1/4
MIS50-80-125	MA-80	1	1 1/4	2 23/32	5 3/4
MIS50-80-138		1	1 3/8	2 23/32	5 3/4
MIS50-80-150		1	1 1/2	2 23/32	5 3/4
MIS50-80-163		1	1 5/8	2 23/32	5 3/4
MIS50-80-175		1	1 3/4	2 23/32	5 3/4
MIS50-100-125	MA-100	2	1 1/4	2 23/32	7 1/4
MIS50-100-138		2	1 3/8	2 23/32	7 1/4
MIS50-100-150		2	1 1/2	2 23/32	7 1/4
MIS50-100-163		2	1 5/8	2 23/32	7 1/4
MIS50-100-175		2	1 3/4	2 23/32	7 1/4
MIS80-200-175	MA-125 MA-150 MA-175 MA-200	2	1 3/4	3 7/16	9 3/8
MIS80-200-188		2	1 7/8	3 7/16	9 3/8
MIS80-200-200		2	2	3 7/16	9 3/8
MIS80-200-212		2	2 1/8	3 7/16	9 3/8
MIS80-200-225		2	2 1/4	3 7/16	9 3/8