

DOSSERT®

TYPE BC2KT

Copper Tee Connector With Mechanical Clamp Round and Compression Tap

Material

Tin plated copper alloy

Hardware

Tin plated Evedur bolts and lock washers.

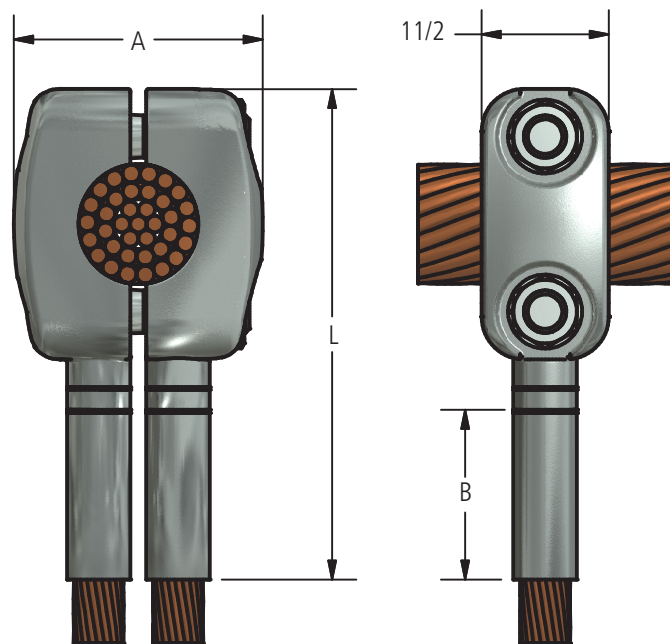
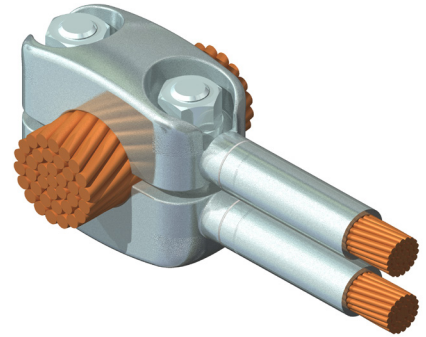


FIG. 1

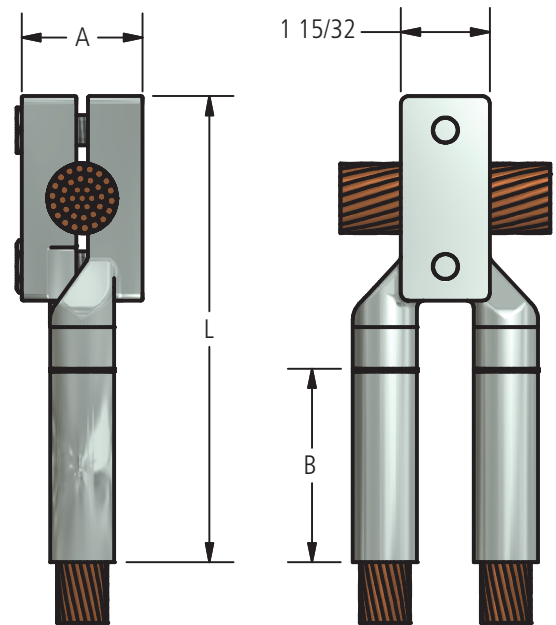


FIG. 2

Ordering Information

CATALOG NUMBER	FIG. NO.	CABLE SIZE		DIMENSION IN INCHES		
		RUN	TAP	A	B	L
BC2KT50-25	1	500 MCM	250 MCM	2 7/32	2	4 29/32
BC2KT100-25	1	1000 MCM	250 MCM	2 5/8	2	5 9/16
BC2KT100-50-S	2	1000 MCM	500 MCM	2	3 3/8	7 11/16
BC2KT150-25	1	1500 MCM	250 MCM	2 13/16	2	5 13/16
BC2KT150-50-S	2	1500 MCM	500 MCM	2	3 3/8	7 11/16

For information on installation tools refer to pages 246 and 247.