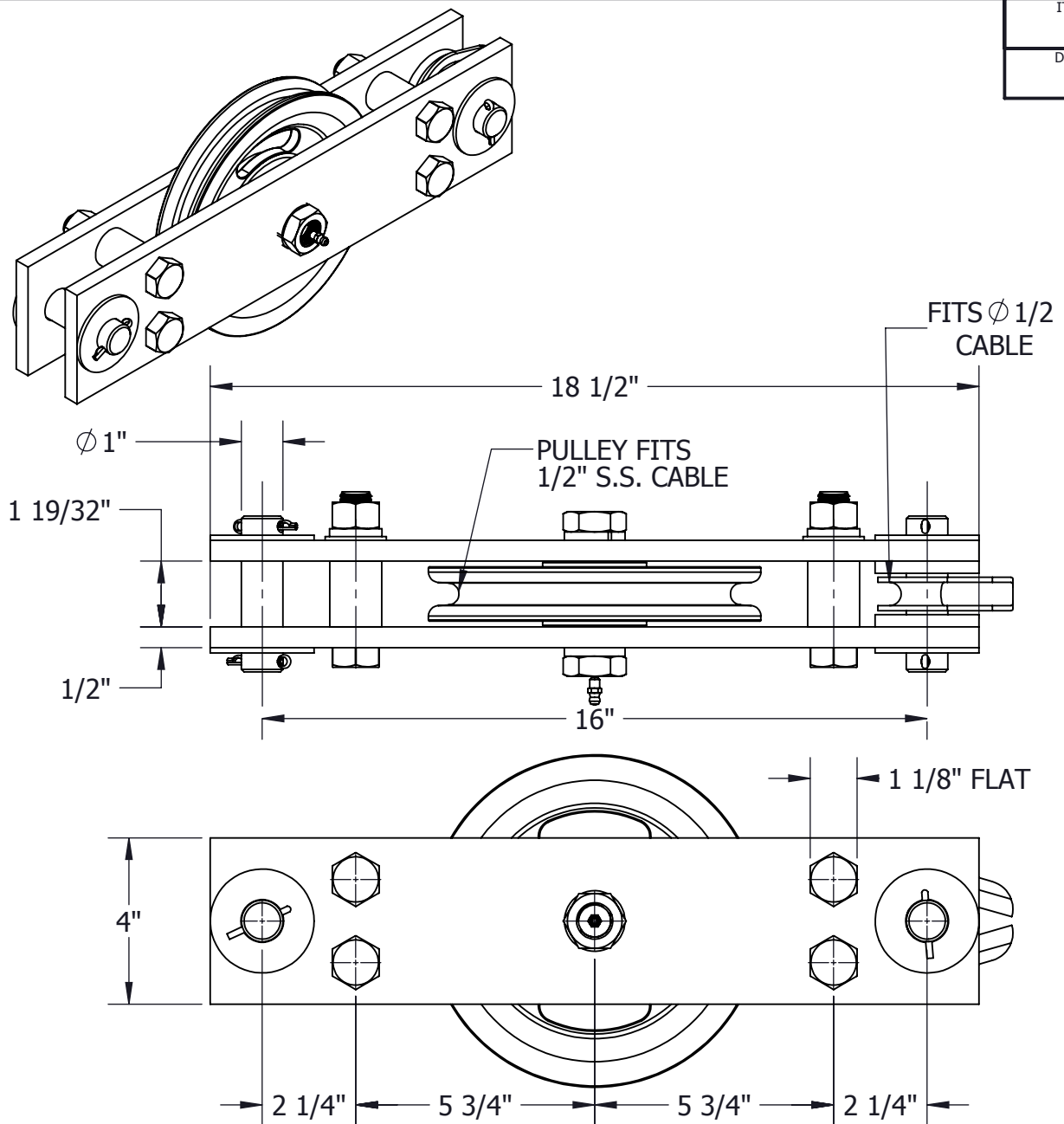


THIS DRAWING AND ALL INFORMATION ON IT IS THE PROPERTY OF AFL. IT IS CONFIDENTIAL AND IT IS GIVEN TO YOU FOR A LIMITED PURPOSE AND MUST BE RETURNED UPON REQUEST. NEITHER THIS DRAWING OR ANY PART OF IT NOR ANY INFORMATION CONCERNING IT MAY BE COPIED, EXHIBITED, OR FURNISHED TO OTHERS NOR PHOTOGRAPHS TAKEN OF ANY ARTICLE FABRICATED OR ASSEMBLED FROM THE DRAWING WITHOUT THE CONSENT OF AFL.

ITEM NO:

DWG. NO:



MAX WORKING LOAD:
19,900 LBS

BOLT SIZES	WRENCH/SOCKET SIZES	TORQUE VALUES (FT-LBS)
7/8-9	1 5/16 HEX	178

MATERIAL:

*CLEVIS PIN, H.D.G.

*SPACER -CARBON STEEL, H.D.G.

*STRAP - COLD DRAWN STEEL, H.D.G.

*WASHER - STEEL, H.D.G.


BOLTS, NUTS & LOCKWASHERS - STAINLESS STEEL ASTM A167

WT: 16.43 LBS

NOTE:

MAINTENANCE REQUIREMENTS. SHAFT TO BE GREASED WITH LITHIUM BASED GREASE EVERY TWO YEARS

* = HOT DIP GALVANIZED

THIS DRAWING ASSIGNED	LOCATION					CONTRACT NO		CUST / CONTR		
	REV					DRN BY: DK DRN DATE: 3.6.13 CHK BY: JL CHK DATE: 3.6.13 PA 2013-1926				
	REV	DESCRIPTION	DATE	BY	APR		PULLEY, SINGLE ASSEMBLY			
							REV	PART NO:		
							0	SPA66-50-106-S		1 OF 1