

# TYPE SW3CT-AA

## Swage Three Cable Offset Terminal

A swage type three cable offset terminals on a nema pad.

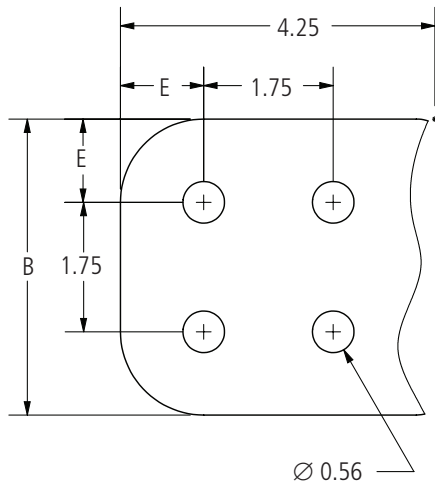
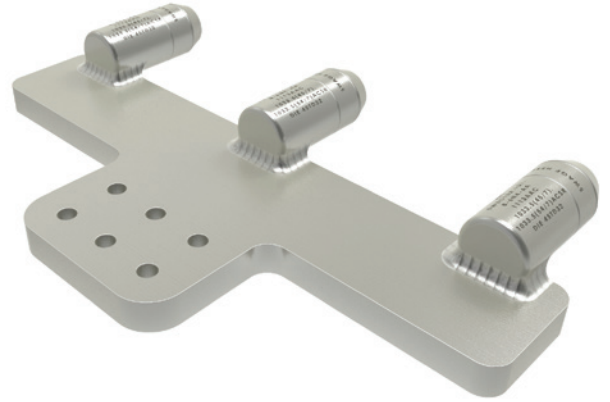
### Material

Aluminum Alloy

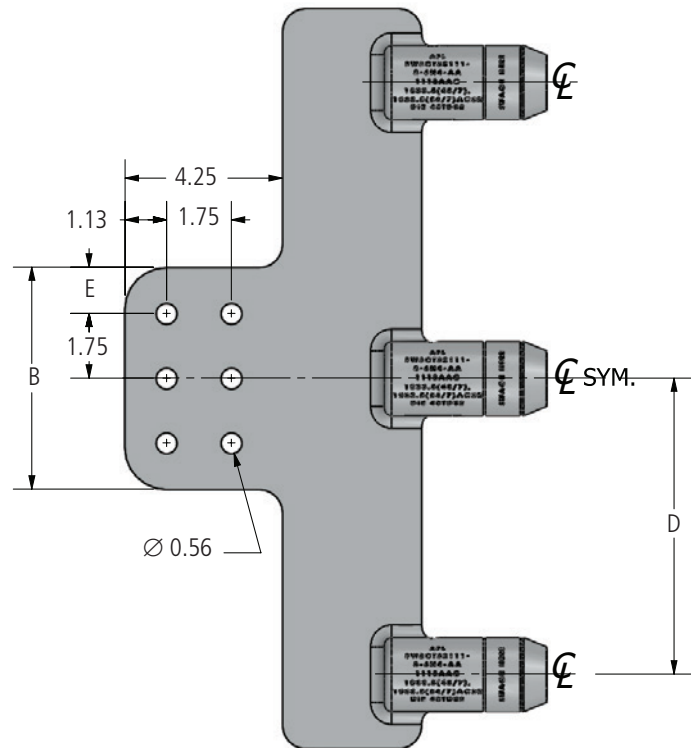
### Notes

- Prefilled with AFL Filler Compound (AFC) and capped.
- For Electro Tin plate add "-SN" to AFL No.  
EX: SW3CT2039-8-6N4-AA-SN

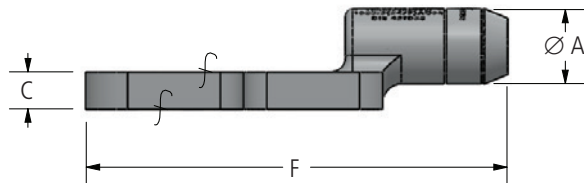
*f*—Machine Finish



Pad Detail 1



Pad Detail 2



continued  
→

# TYPE SW3CT-AA

## Swage Three Cable Offset Terminal

### Ordering Information

AFL NO.	CABLE RANGE		PAD DETAIL	DIMENSIONS IN INCHES						DIE SIZE
	AAC	ACSR		A	B	C	D	E	F	
SW3CT2039-8-6N4-AA	397.5	336.4 (26/7), 336.4 (30/7), 397.5 (18/1)	2	1.25	6.00	0.75	8.00	1.25	11.25	45TD20
SW3CT2871-8-6N4-AA	700, 715.5	556.5 (30/7), 605 (24/7), 605 (26/7), 636 (18/1), 636 (36/1)	2	1.75	6.00	1.25	8.00	1.25	11.25	45TD28
SW3CT3075-8-6N4-AA	750	605 (30/7), 605 (30/19), 636 (24/7), 636 (26/7)	2	1.88	6.00	1.00	8.00	1.25	11.25	45TD30
SW3CT3075-18-6N4-AA	750	605 (30/7), 605 (30/19), 636 (24/7), 636 (26/7)	2	1.88	6.00	1.00	18.00	1.25	11.25	45TD30
SW3CT3079-8-4N4-AA	795	715.5 (24/7), 715.5 (54/7), 795 (36/1)	1	1.88	4.00	1.00	8.00	1.13	11.25	45TD30
SW3CT3079-8-6N4-AA	795	636 (30/7), 636 (30/19), 715.5 (24/7), 715.5 (54/7), 795 (36/1)	2	1.88	6.00	1.00	8.00	1.25	11.25	45TD30
SW3CT3079-18-6N4-AA	795	636 (30/7), 636 (30/19), 715.5 (24/7), 715.5 (54/7), 795 (36/1)	2	1.88	6.00	1.00	18.00	1.25	11.25	45TD30
SW3CT3087-8-6N4-AA	874.5	715.5 (26/7), 715.5 (30/19), 795 (45/7)	2	1.88	6.00	1.25	8.00	1.25	11.25	45TD30
SW3CT3087-18-6N4-AA	874.5	715.5 (26/7), 715.5 (30/19), 795 (45/7)	2	1.88	6.00	1.00	18.00	1.25	11.25	45TD30
SW3CT32103-8-4N4-AA	1033.5	954 (54/7)	1	2.00	4.00	1.00	8.00	1.13	11.38	45TD32
SW3CT32111-8-6N4-AA	1113	1033.5 (45/7), 1033.5 (54/7)	2	2.00	6.00	1.00	8.00	1.25	11.38	45TD32
SW3CT32111-18-6N4-AA	1113	1033.5 (45/7), 1033.5 (54/7)	2	2.00	6.00	1.00	18.00	1.25	11.38	45TD32
SW3CT36127-4-6N4-AA	1272	1113 (54/19), 1192.5 (45/7)	2	2.25	6.00	1.00	4.00	1.25	11.75	45TD36
SW3CT36127-8-6N4-AA	1272	1113 (54/19), 1192.5 (45/7)	2	2.25	6.00	1.00	8.00	1.25	11.75	45TD36
SW3CT36127-18-6N4-AA	1272	1113 (54/19), 1192.5 (45/7)	2	2.25	6.00	1.00	18.00	1.25	11.75	45TD36
SW3CT36143-8-6N4-AA	1431	1272 (54/19), 1351.5 (45/7)	2	2.25	6.00	1.25	8.00	1.25	11.75	45TD36
SW3CT36143-18-6N4-AA	1431	1272 (54/19), 1351.5 (45/7)	2	2.25	6.00	1.00	18.00	1.25	11.75	45TD36
SW3CT36151-8-6N4-AA	1510.5	1351.5 (54/19), 1431 (45/7)	2	2.25	6.00	1.00	8.00	1.25	11.75	45TD36
SW3CT36151-18-6N4-AA	1510.5	1351.5 (54/19), 1431 (45/7)	2	2.25	6.00	1.00	18.00	1.25	11.75	45TD36
SW3CT36159-4-4N4-AA	1590	1431 (54/19), 1510.5 (45/7)	1	2.25	3.00	1.00	4.00	0.63	8.75	45TD36
SW3CT36159-4-4N4-AA	1590	1431 (54/19), 1510.5 (45/7)	1	2.25	4.00	1.00	4.00	1.13	11.75	45TD36
SW3CT36175-8-6N4-AA	1750	1510.5 (54/19), 1590 (45/7)	2	2.25	6.00	1.00	8.00	1.25	11.75	45TD36
SW3CT36175-18-6N4-AA	1750	1510.5 (54/19), 1590 (45/7)	2	2.25	6.00	1.00	18.00	1.25	11.75	45TD36
SW3CT44200-8-4N4-AA	2000	1780 (84/19)	1	2.75	4.00	1.00	8.00	1.13	12.38	65TD44
SW3CT44200-18-4N4-AA	2000	1780 (84/19)	1	2.75	4.00	1.00	18.00	1.13	12.38	65TD44
SW3CT44230-8-4N4-AA	2250	2156 (84/19), 2167 (72/7)	1	2.75	4.00	1.00	8.00	1.13	12.38	65TD44
SW3CT44230-18-4N4-AA	2250	2156 (84/19), 2167 (72/7)	1	2.75	4.00	1.00	18.00	1.13	12.38	65TD44
SW3CT44230-8-6N4-AA	2250	2156 (84/19), 2167 (72/7)	2	2.75	6.00	1.25	8.00	1.25	12.38	65TD44
SW3CT44230-18-6N4-AA	2250	2156 (84/19), 2167 (72/7)	2	2.75	6.00	1.00	18.00	1.25	12.38	65TD44
SW3CT44250-8-4N4-AA	2500	2312 (76/19)	1	2.75	4.00	1.00	8.00	1.13	12.38	65TD44
SW3CT44250-18-4N4-AA	2500	2312 (76/19)	1	2.75	4.00	1.00	18.00	1.13	12.38	65TD44
SW3CT44250-8-6N4-AA	2500	2312 (76/19)	2	2.75	6.00	1.00	8.00	1.25	12.38	65TD44
SW3CT44250-18-6N4-AA	2500	2312 (76/19)	2	2.75	6.00	1.00	18.00	1.25	12.38	65TD44