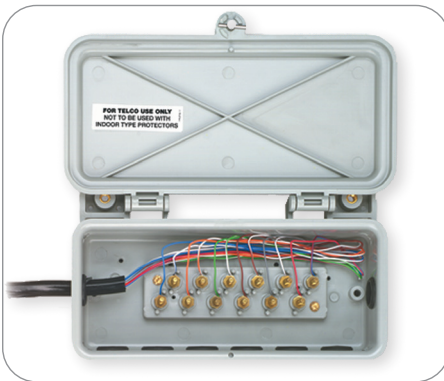


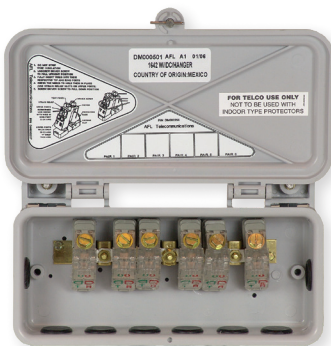
Terminal Access TA-1642 Terminal Enclosure

AFL's TA-1642 terminal enclosure is uniquely designed to withstand harsh environments, such as high moisture and coastal areas. The TA-1642 can be used in aerial, pole or wall mount applications and can be outfitted with heavy plated steel hangers designed to grip the support strand and prevent rotation. Internal punch-out holes allow for wall or pole mounting. Stainless steel lashing straps can be mounted through punch-outs for pole, post or piling mounting. The TA-1642 also features eight (8) individually grommeted entry/exit ports for multiple drop wire installations. The unit features a ¼ turn fastener for easy open/close access using a 216 tool (can wrench).

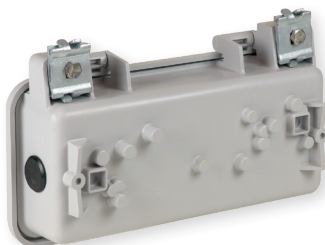
The IDC version of the TA-1642 is a 6-pair sealed termination device equipped with six (6) pre-installed individual IDC termination modules mounted onto a single common ground bus bracket. The bus bracket also allows common bonding of ground wire, sheath armor and/or strand wire. The IDC termination modules require no stripping of the copper wire insulation prior to connection. In addition, each module has two (2) ports for small gauge (22-24 AWG) wire terminations and two (2) ports that accept large gauge (18-19 AWG) or small gauge (22-24 AWG) wire for tip/ring connections. The ports are color coded for easy tip/ring identification. Labelling inside the cover allows for line identification of each IDC termination module along with illustrated installation instructions.



Terminal version



IDC version



Optional hanger brackets

Features

Enclosure Housing

- Engineered thermoplastic weatherproof enclosure
- UV, Impact and chemical resistant
- Flame retardant
- Aerial, wall or pole/piling mounting applications
- Optional strand hanger brackets
- Quarter-turn stainless steel fastener
- Eight grommeted cable entry/exit ports
- Craft-friendly design

Terminal Version

- An alternative to the 116 or 104 closure
- Houses 142 and 57 style protectors
- Accepts AFL, AT&T and Reliable terminal blocks
- Available with binding post, IDC or gas tube protection

IDC Version

- Individual gel-sealed IDC termination modules pre-installed
- 18-24 AWG copper wire termination

Ordering Information

DESCRIPTION	MODEL NO.	AFL NO.
TA-1642 Terminal Enclosure with #90313 Terminal Block (6-Pair)	1642-1-34	90379
TA-1642 Terminal Enclosure with six 125-style Gas Tube Protectors	1642-1-37	DM000124
TA-1642 Hanging Hardware Kit (for 5/16" to 7/16" strand)	1642 Hanging Hardware	90323
TA-1642 IDC Terminal Enclosure	1642 IDC	DM000254
TA-1642 Hanger Bracket Kit (for 5/16" to 7/16" strand)	1642 Hanging Hardware Kit	90323

Qualifications

GOVERNING BODY	STANDARD CODE	COMPONENT
Telcordia	GR-975 GR-1195	Sealing IDC Cross-connect and Terminal Blocks
UL	Listed	

Contact AFL for further details.