

DOSSERT®

TYPE GA, GAA

Two Conductor Flat Bar Ground Clamp

A single or double bolt ground clamp for clamping two wires or cables to a flat bar, plate, or structural member. Permits a slight range of variability in accommodating different size conductors. Bolts are retained by body to enable assembling with only one wrench. Bolts are supplied to clamp a 1/4 inch bar. GAA is similar to GA except that it is designed for heavier service.

Material

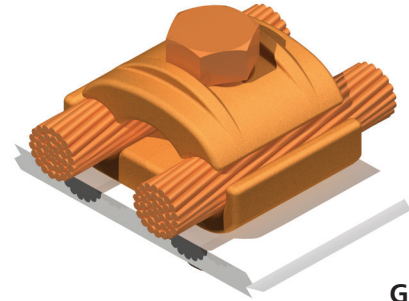
Copper Alloy

Hardware

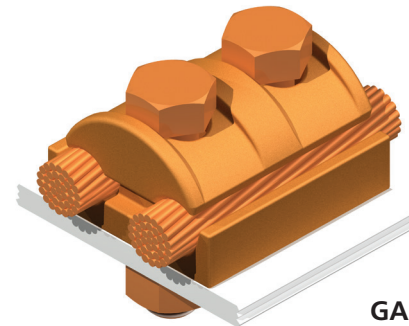
Everdur bolts, nuts and lockwashers

Notes

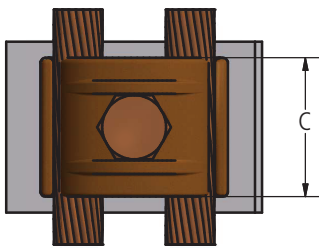
- Bolt length supplied to clamp a 1/4 inch bar with maximum conductor in place.
- For thicker bars, longer bolts will be furnished upon request.
- For tin plating, add suffix "-SN" to catalog number EX: GA13-SN
- For galvanized steel hardware, add suffix "-GS" to catalog number EX: GA13-GS
- For stainless steel hardware, add suffix "-SS" to catalog number EX: GA13-SS



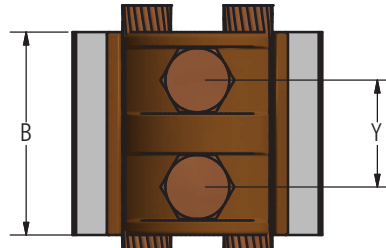
GA



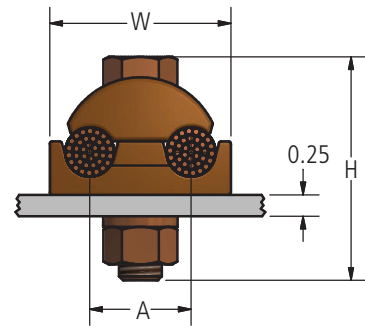
GAA



GA



GAA



Ordering Information

CATALOG NUMBER		CABLE RANGE		DIMENSIONS IN INCHES						BOLT SIZE
GA	GAA	MIN	MAX	A	B	C	H	W	Y	
GA4	GAA4	8 SOL	4 STR	0.75	2.00	1.38	1.38	1.25	0.94	3/8
GA13	GAA13	4 SOL	2/0 STR	1.00	2.00	1.53	1.70	1.72	1.00	3/8
GA25	GAA25	2/0 SOL	250 MCM	1.31	2.50	1.63	2.25	2.25	1.25	1/2
GA25-S	GAA25-S	2/0 SOL	250 MCM	1.25	2.94	1.75	2.25	2.25	1.75	1/2
GA50	GAA50	300 MCM	500 MCM	1.50	2.50	2.00	2.86	2.63	1.38	1/2
GA50-N	GAA50-N	300 MCM	500 MCM	1.50	2.50	2.00	2.86	2.63	1.38	1/2
GA75	GAA75	550 MCM	750 MCM	1.75	3.00	2.38	3.00	3.25	1.56	5/8
GA80-1/2	GAA80-1/2	500 MCM	800 MCM	1.88	3.00	2.38	3.00	3.31	1.56	1/2
GA100	GAA100	800 MCM	1000 MCM	2.00	3.00	2.50	3.25	3.63	1.56	5/8

DOSSERT®

TYPE GAM

Copper Grounding Connector For Two Cables To A Flat Surface

A single bolt, one piece ground clamp for clamping two wires or cables to a flat bar, plate, or structural member. Permits a slight range of variability in accommodating different size conductors. Bolts are retained by body to enable assembling with only one wrench. Bolts are supplied to clamp a 1/4 Inch bar.

Material

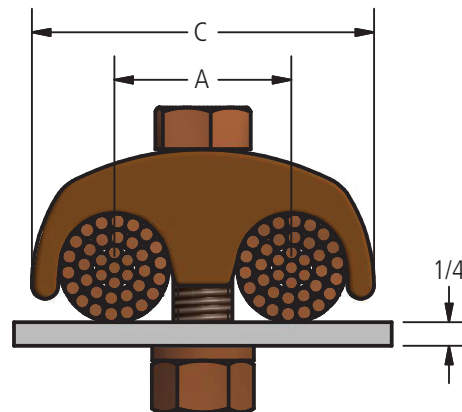
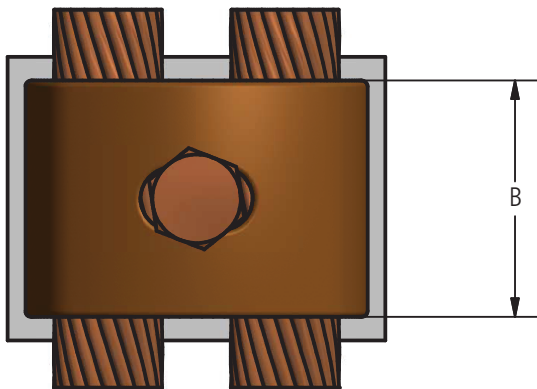
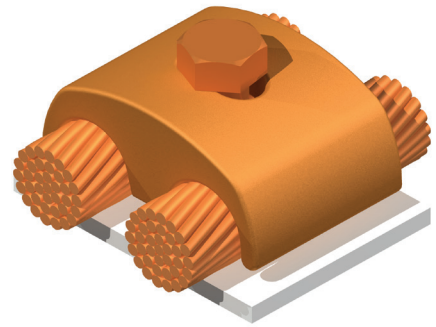
Copper Alloy

Hardware

Everdur bolts, nuts and lockwashers

Note

- Bolt length supplied to clamp a 1/4 inch bar with maximum conductor in place. For thicker bars, longer bolts will be furnished upon request.
- For tin plating add suffix "-SN" to end of catalog number. Example: GAM13-SN
- For a galvanized steel bolt add suffix "-GS" to end of catalog number. Example: GAM13-GS



Ordering Information

CATALOG NUMBER	GROUNDING		DIMENSIONS IN INCHES			BOLT SIZE
	MIN	MAX	A	B	C	
GAM4	8 Solid	4 Stranded	3/4	1 1/4	1 1/8	3/8
GAM13	4 Solid	2/0 Stranded	1	1 1/2	1 1/2	3/8
GAM25	2/0 Solid	250 MCM	1 1/4	1 3/4	2 1/8	1/2
GAM50	300 MCM	500 MCM	1 1/2	2	2 5/8	1/2
GAM75	550 MCM	750 MCM	1 3/4	2 1/4	3 1/8	5/8
GAM100	800 MCM	1000 MCM	1 7/8	2 1/2	3 1/2	5/8

DOSSERT®

TYPE GB, GBB

Copper Grounding Connector for Three Cables to a Flat Surface.

GB style is a two bolt design and GBB is a four bolt design. These clamps are used for clamping three cables of equal size to a flat bar, plate, or structural member. Bolts are retained by body to enable assembling with only one wrench. Bolts are supplied to clamp a 1/4 inch bar.

Material

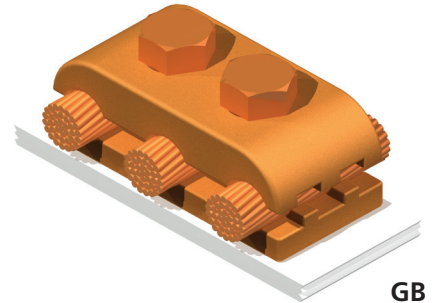
Copper Alloy

Hardware

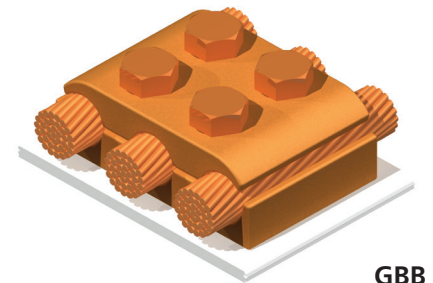
Everdur bolts, nuts and lockwashers

Note

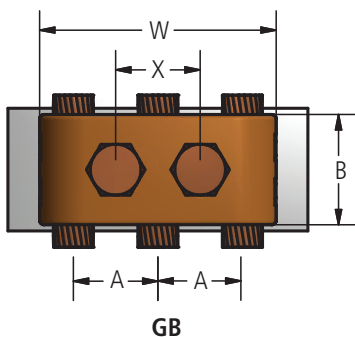
- Bolt length supplied to clamp a 1/4 inch bar with maximum conductor in place.
- For thicker bars, longer bolts will be furnished upon request. For tin plating add suffix (SN) to catalog number. Example: For a 4 solid conductor, 2 bolt clamp, and tin plating, order: GB13-SN
- For a galvanized steel bolt add suffix (GS) to catalog number. Example: For a 4 solid conductor, 4 bolt clam, and galvanized steel bolts, order: GBB13-GS



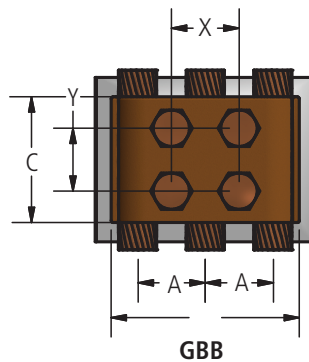
GB



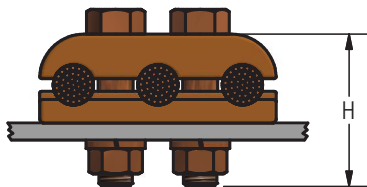
GBB



GB



GBB



Ordering Information

CATALOG NUMBER		CABLE RANGE		DIMENSIONS IN INCHES							BOLT SIZE
GB	GBB	MIN	MAX	A	B	C	H	W	X	Y	
GB4	GBB4	8 Solid	4 Stranded	7/8	1 1/2	2	1 5/8	2 1/8	7/8	7/8	3/8
GB13	GBB13	4 Solid	2/0 Str	1	1 3/4	2 1/8	1 3/4	1 3/4	1	1	3/8
GB25	GBB25	2/0 Solid	250 MCM	1 1/4	1 5/8	2 5/8	2 1/2	3 1/2	1 1/4	1 1/4	1/2
GB50	GBB50	300 MCM	500 MCM	1 1/2	2 1/4	2 5/8	2 1/2	4 1/4	1 1/2	1 1/4	1/2
GB75	GBB75	550 MCM	750 MCM	1 13/16	2 1/2	3 1/4	2 3/4	5	1 13/16	1 1/2	5/8
GB100	GBB100	800 MCM	1000 MCM	2	2 3/4	3 1/4	3	5 1/2	2	1 1/2	5/8

DOSSERT®

TYPE GF, GFM

Copper Grounding Connector for Cable to a Flat Surface

A ground clamp for grounding a cable or wire to a flat bar, plate or flat structural steel member. The bolt is retained by the body to enable assembly with only one wrench. GFM comes without the base.

Material

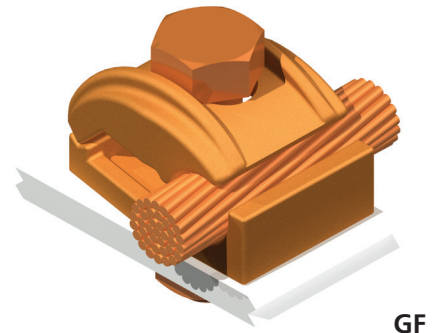
Copper Alloy

Hardware

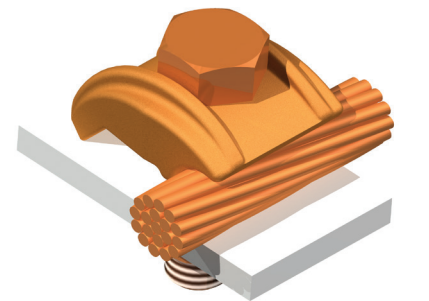
Everdur bolts, nuts and lockwashers

Notes

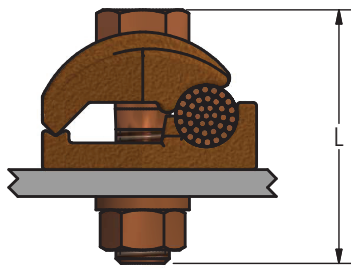
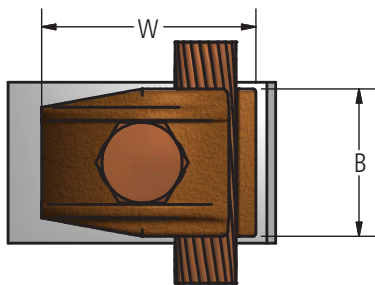
- Bolt length supplied to clamp a 1/4" bar with maximum conductor in place. For thicker bars, longer bolts will be furnished upon request.
- For tin plating add suffix "-SN" to end of catalog number. Example: GF13-SN
- For a 300 mcm conductor and one piece assembly, order GFM50.
- For Galvanized Steel Hardware, add "-GS" to catalog number. EX: GF13-GS
- For Stainless Steel Hardware, add "-SS" to catalog number. EX: GF13-SS



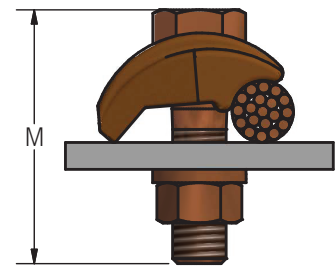
GF



GFM



GF



GFM

Ordering Information

CATALOG NUMBER		CABLE RANGE		DIMENSIONS IN INCHES				BOLT SIZE
GF	GFM	MIN	MAX	B	L	M	W	
GF4	GFM4	8 Solid	4 Stranded	1	1 15/16	1 7/16	1 7/16	3/8
GF13	GFM13	4 Solid	2/0 Stranded	1 1/8	1 15/16	1 11/16	1 9/16	3/8
GF25	GFM25	2/0 Solid	250 MCM	1 3/8	2 1/4	2	2	1/2
GF30	GFM30	4 Solid	300 MCM	1 3/8	2 5/8	2 1/8	2	1/2
GF50	GFM50	300 MCM	500 MCM	1 1/2	2 7/8	2 1/4	2 7/16	1/2
GF75	GFM75	550 MCM	750 MCM	1 5/8	3 1/4	2 3/4	2 7/8	5/8
GF100	GFM100	800 MCM	1000 MCM	1 3/4	3 1/2	3 1/4	3 3/16	5/8

DOSSERT®

TYPE GL

Ground Clamp for Cable to Flat Bar

A connector for grounding a cable or wire to flat bar, plate or structural frame. The looping of the conductor about the clamping bolt insures a secure electrical contact and a high pull out strength. Standard bolt length is provided to mount the connector on a 1/4 inch thick member.

Material

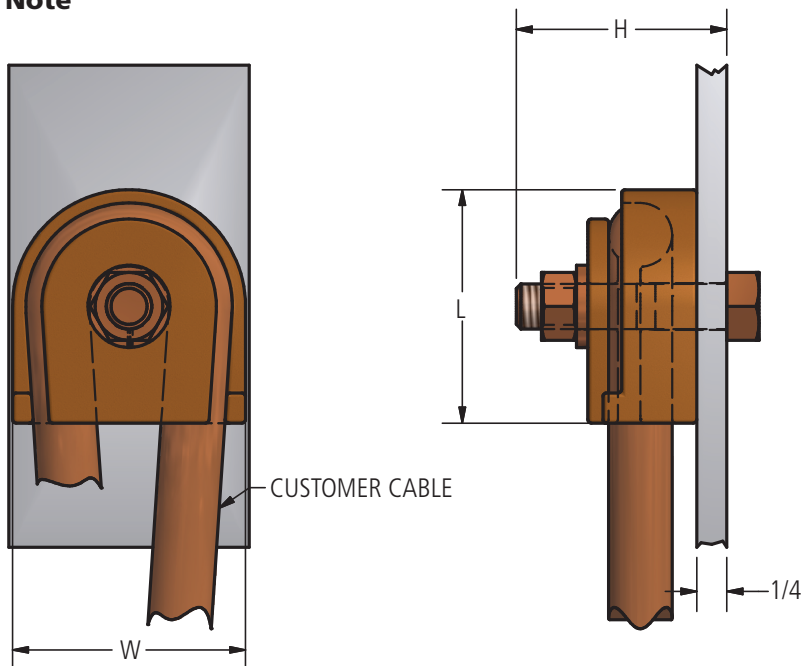
Copper Alloy

Hardware

Everdur bolts, nuts and lockwashers

- Longer bolts can be furnished on request.
- For tin plating add suffix "-SN" to end of catalog number. Example: GL13-38-SN

Note



Ordering Information

CATALOG NUMBER	CABLE RANGE		DIMENSIONS IN INCHES			BOLT SIZE
	MIN	MAX	H	L	W	
GL4-38	8 Stranded	4 Stranded	1 1/2	1 7/16	1 1/4	3/8
GL4-50	8 Stranded	4 Stranded	1 7/8	1 15/16	1 3/4	1/2
GL4-63	8 Stranded	4 Stranded	2	1 15/16	1 3/4	5/8
GL13-38	3 Stranded	2/0 Stranded	2	1 7/8	1 11/16	3/8
GL13-50	3 Stranded	2/0 Stranded	2 1/8	1 15/16	1 13/16	1/2
GL13-63	3 Stranded	2/0 Stranded	2 1/4	1 15/16	1 13/16	5/8
GL25-38	3/0 Stranded	250 MCM	2 1/4	2 7/16	2 1/8	3/8
GL25-50	3/0 Stranded	250 MCM	2 3/8	2 7/16	2 1/4	1/2
GL25-63	3/0 Stranded	250 MCM	2 1/2	2 7/16	2 1/4	5/8