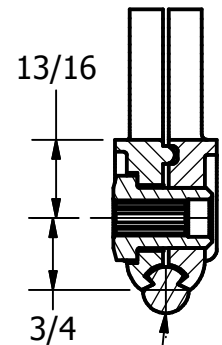
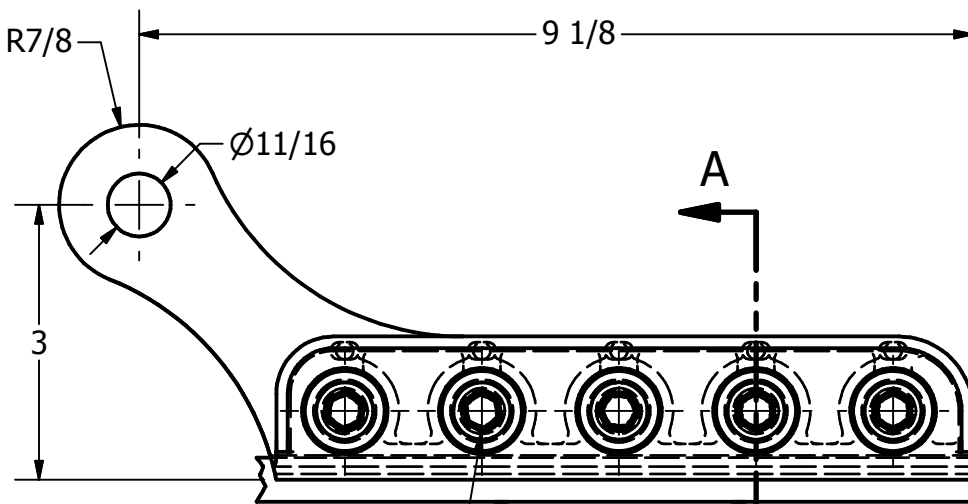
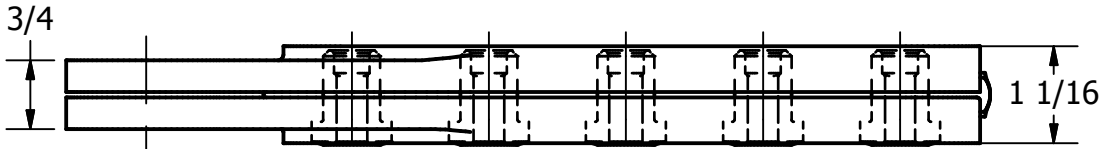
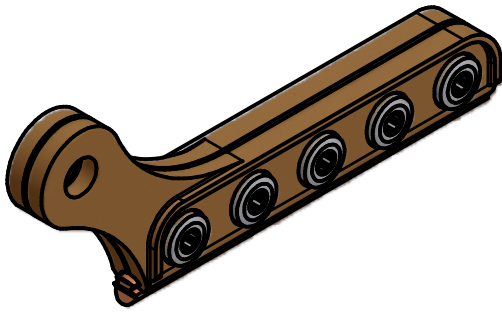


ITEM NO

DWG NO
B-7953



4/0 TO 336.4 MCM
GROOVED TROLLEY WIRE

STUD, 5/8-18NF-2A, ST STL
(SCAT-63-SS)

SECTION A-A

MATERIAL:
ALUMINUM BRONZE ASTM B30.

TORQUE STUD 45 FT-LBS

3.22 LBS

MIN ULTIMATE STRENGTH LOAD

F1= 9,180 LBS

MAX. WORKING LOAD

F2=3,672 LBS

SAFETY FACTOR

2.5

THIS DRAWING AND ALL INFORMATION ON IT IS THE PROPERTY OF AFL. IT IS CONFIDENTIAL AND IT IS GIVEN TO YOU FOR A LIMITED PURPOSE AND MUST BE RETURNED UPON REQUEST. NEITHER THIS DRAWING OR ANY PART OF IT NOR ANY INFORMATION CONCERNING IT MAY BE COPIED, EXHIBITED, OR FURNISHED TO OTHERS NOR PHOTOGRAPHS TAKEN OF ANY ARTICLE FABRICATED OR ASSEMBLED FROM THE DRAWING WITHOUT THE CONSENT OF AFL.

LOCATION				CONTRACT NO		CUST / CONTR	
REVISIONS				<p>DRN BY: CV DRN DATE: 2-2-95 CHK BY: HJ CHK DATE: 2-6-95</p>			
REV	DESCRIPTION	DATE	BY	APR	<p>AFL DOSSERT®</p> <p>CLAMP, AUXILIARY TROLLEY WIRE</p>		
4	RE-DRAWN IN INVENTOR	1-15-10	LK	EP	<p>REV 4 AETC34T 1 OF 1</p>		