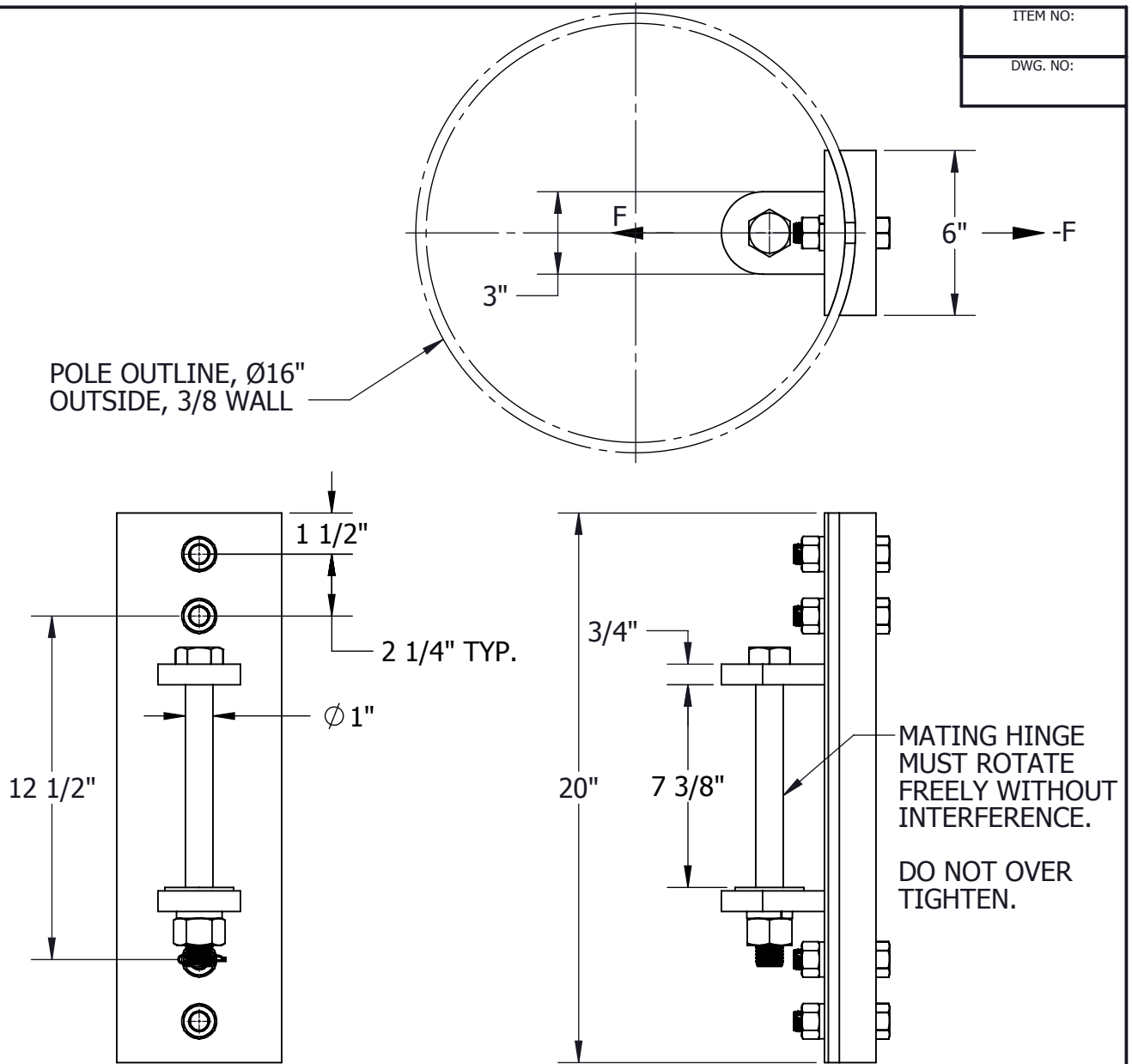


THIS DRAWING AND ALL INFORMATION ON IT IS THE PROPERTY OF AFL. IT IS CONFIDENTIAL AND IT IS GIVEN TO YOU FOR A LIMITED PURPOSE AND MUST BE RETURNED UPON REQUEST. NEITHER THIS DRAWING OR ANY PART OF IT NOR ANY INFORMATION CONCERNING IT MAY BE COPIED, EXHIBITED, OR FURNISHED TO OTHERS NOR PHOTOGRAPHS TAKEN OF ANY ARTICLE FABRICATED OR ASSEMBLED FROM THE DRAWING WITHOUT THE CONSENT OF AFL.

ITEM NO:

DWG. NO:



MATERIAL:

BWA BRACKET & BACKING PLATE - ASTM A36 STEEL, H.D.G.*

BOLTS, NUTS, & LOCKWASHER - STEEL H.D.G.*

HINGE WASHER & COTTER PIN- STAINLESS STEEL

MECHANICAL RATINGS:

MIN. ULTIMATE STRENGTH LOAD (F): 35,000 LBS

BOLT SIZES	WRENCH/SOCKET SIZES	TORQUE VALUES (FT-LBS)
3/4-10	1 1/8 HEX	125 - 165
1-8	1 1/2 HEX	275

WT: 51.5 LB

* = HOT DIP GALVANIZED

LOCATION

CONTRACT NO

CUST / CONTR

REVISIONS

REV	DESCRIPTION	DATE	BY	APR

DRN BY:
BR
DRN DATE:
7.27.17
CHK BY:
GC
CHK DATE:
7.27.17
PA 2015.231.0

AFL DOSSERT®

BWA MTG BRACKET, INTERNAL, RND POLE

REV
0

PART NO:

BWA-IBRKT-A01

1 OF 1